

# CERTIFIED CORNER RECORDATION

Corner SW - Section 9 T. 27 N. R. 27 W. P.M.M. Lincoln County

CORNER COMMON TO SECTIONS 8, 9, 16 & 17.

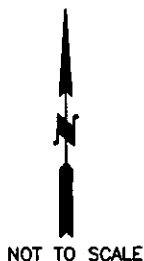
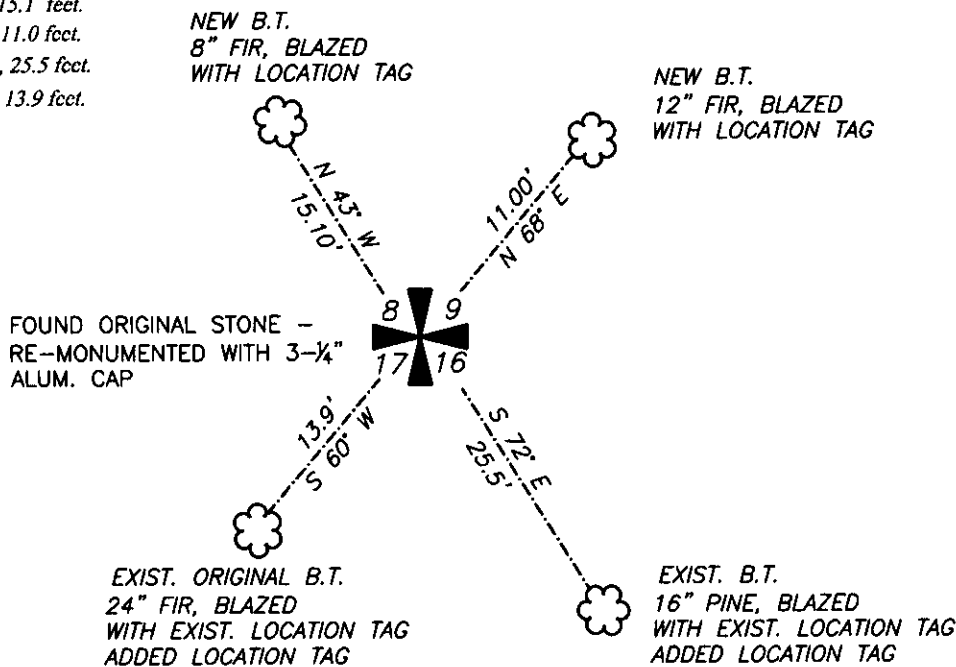
G.L.O. RECORD 1900 - Set a shale stone 15x8x6 ins., 10 ins in the ground, for Cor. of Secs. 8, 9, 16 & 17 marked with 4 notches on S., and 4 notches on E. edges; from which:

- a fir 10 ins. in diam. bears N 56° E, 36 Lks dist., marked T27N, R27W, S9, B.T.
- a fir 10 ins. in diam. bears S 46° E, 54 Lks dist., marked T27N, R27W, S16, B.T.
- a fir 10 ins. in diam. bears S 60° W, 20 Lks dist., marked T27N, R27W, S17, B.T.
- a fir 10 ins. in diam. bears N 49° W, 51 Lks dist., marked T27N, R27W, S8, B.T.

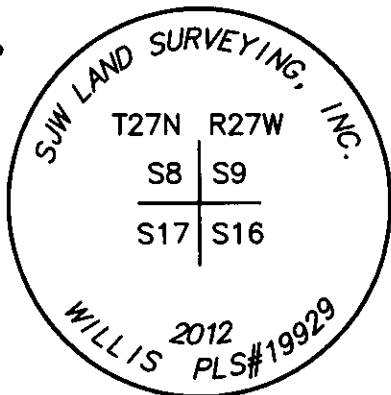
FOUND 2012 - 15x6x5 ins. shale stone, 10 ins. in the ground, with 4 notches on the south, and 4 notches on the east. Found original bearing tree with window scar, and metal location tag scribed "S 60° W 21 lks 4/20/1960". Found stump hole which bears N 56° E, 24.0', and a laid over fir tree next to stump hole with scribing clearly visible reading "T27N R27W S9 BT". Found a 16" pine tree with a blaze and metal location tag scribed "25.5' 9-26-1956", no bearing on tag. I re-monument this corner position as described below.

I set a 5/8" x 24" rebar with a 3-1/4" aluminum cap, marked: "WILLIS PLS#19929 2012" at the exact position of the found stone, as shown and described below. I bury original stone upside down along side new monument. I blaze, establish location tags, and paint 6" red bands on the following accessories:

- A 8" Fir, bears N. 43° W., 15.1 feet.
- A 12" Fir, bears N. 68° E., 11.0 feet.
- A 16" Pine, bears S. 72° E., 25.5 feet.
- A 24" Fir, bears S. 60° W., 13.9 feet.



3-1/4" ALUM. CAP



**CERTIFICATION**

\_\_\_\_\_  
**STEWART J. WILLIS**  
 certify the information shown hereon is true and correct.

\_\_\_\_\_  
 Signature of Surveyor

\_\_\_\_\_  
**STEWART J. WILLIS**  
 certify that this Corner Record correctly represents work performed by me or under my direction in compliance with the "Corner Recordation Act" (7-302-101, et seq., M.C.A.)

\_\_\_\_\_  
 Signature of Client

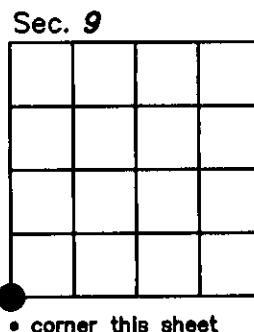
Date: 8-21-12 Reg. No. 19929

Employer: SJW LAND SURVEYING, INC.

**SKETCH OF CORNER**

Office of Clerk an  
 record" was filed  
 was noted on the  
 book No. \_\_\_\_\_

240349 BOOK: CCR CC&R'S PAGE: 11983 Pages: 1  
 STATE OF MONTANA LINCOLN COUNTY  
 RECORDED: 08/22/2012 9:08 KOI: CC&R'S  
 TAMMY D. LAUER CLERK AND RECORDER  
 FEE: \$0.00 BY: Debi French Deputy  
 County Official



Cross Index No. \_\_\_\_\_ T. \_\_\_\_\_ R. \_\_\_\_\_ PMM