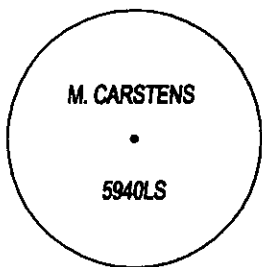
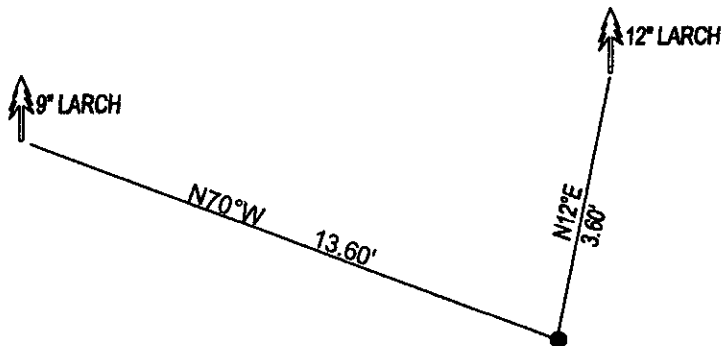


CERTIFIED CORNER RECORDATION

Corner SE CORNER GOVT LOT 11 T. 27N R. 27W P.M.M. County LINCOLN
SECTION 4

RECORD: NONE

SET: 5/8"x24" REBAR WITH YPC, STAMPED AS SHOWN, FROM WHICH:
 12" LARCH BEARS N12°E 3.60' SCRIBED RM.
 9" LARCH BEARS N70°W 13.60' SCRIBED RM.
 SET A STEEL POST 1' NORTH AND 3' WEST OF CORNER.
 ATTACHED BY TAGS AND PAINTED A RED 6" BAND AND SCRIBE RED



SKETCH OF CORNER

CERTIFICATION

I, DAN CROFT
certify the information shown herein is true and correct.

Signature Ground Party Chief

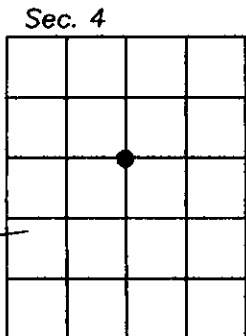
I, MARC J. CARSTENS
certify that this Corner Record correctly represents work performed by me or under my direction in compliance with the Corner Recordation Act (74-22-101, et seq., M.C.A.)

Signature of Surveyor & Seal

Date: 7-2009 Reg. No. 5940 LS
 Employer: CARSTENS LAND SURVEYING



Office of Clerk and Recorder, County of LINCOLN . This "corner record" was filed for record on 220442 BOOK: CCR CC&R'S PAGE: 11320 Pages: 1
 was noted on the cross-index STATE OF MONTANA LINCOLN COUNTY
 book No. _____ RECORDED: 07/21/2009 10:05 KOI: CC&R'S
 TAMMY D. LAUER CLERK AND RECORDER
 FEE: \$0.00 BY: Jeannie Dennis Deputy
 TO: CARSTENS LAND SURVEYING P.O. BOX 1374, POLSON, MONTANA
 Cross Index No. B-11 T. 27N R. 27W PMM



● corner this sheet

