

CERTIFIED CORNER RECORDATION

Corner W 1/4 SEC. 4 T. 27N R. 27W P.M.M. County LINCOLN

RECORD: SET A SHALE STONE 18X12X8 12 INS. INTO THE GROUND WITH 1/4 ON WEST FACE, FROM WHICH:

8" PINE BEARS N03°E 74 LKS (48.84') MARKED 1/4 S 4 BT.
15" PINE BEARS N10°W 62 LKS (40.92') MARKED 1/4 S 5 BT.

FOUND: STONE WELL SET WITH 1/4 ON WEST FACE IN A LARGE MOUND OF STONE, FROM WHICH:

24" PINE BEARS N02°E 48.90 MARKED 1/4 S 4 BT.
22" PINE STUMP BEARS N07°W 41.0' NO SCRIBE REMAINS.

MAINTENANCE: REMOVED BRUSH FROM CORNER AREA.

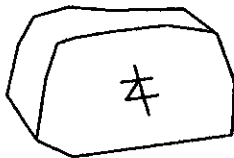
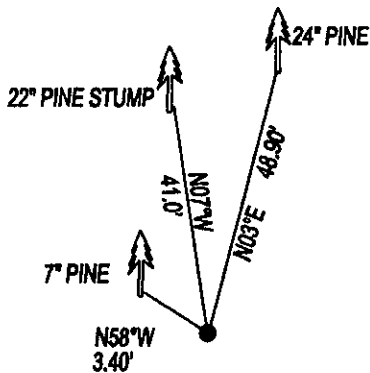
NEW BT

7" PINE BEARS N58°E 3.40' SCRIBED 1/4 RM.

NO TREES WITHIN LIMITES IN SECTION 4

SET A STEEL POST 8' EAST OF STONE.

ATTACHED BT TAGS AND PAINTED A RED 6" BAND AND SCRIBE RED



SKETCH OF CORNER

CERTIFICATION

DAN CROFT

certify the information shown herein is true and correct.

Signature Ground Party Chief

MARC J. CARSTENS

certify that this Corner Record correctly represents work performed by me or under my direction in compliance with the "Corner Recordation Act" (7-22-101, et seq., M.C.A.)

Signature of Surveyor & Seal



Date: 7-2009 Reg. No. 5940 LS

Employer: CARSTENS LAND SURVEYING

Office of Clerk and Recorder, County of LINCOLN This "corner

record" was filed for record on 220439 BOOK: CCR CC&R'S PAGE: 11317 Pages: 1

Sec. 4

STATE OF MONTANA LINCOLN COUNTY

was noted on the cross-index plat: RECORDED: 07/21/2009 9:50 KOI: CC&R'S

TAMMY D. LAUER CLERK AND RECORDER

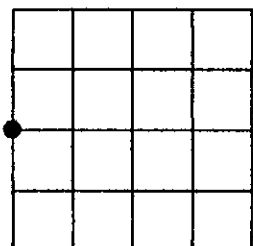
book No. FEE: \$0.00

BY: *Marc J. Carstens*

TO: CARSTENS LAND SURVEYING P.O. BOX 1374, POLSON, MONTANA

Cross Index No. C-9 T. 27N R. 27W PMM

Adopted July 1, 1981, Montana Board of Professional Engineers & Land Surveyors



• corner this sheet