

CERTIFIED CORNER RECORDATION

Corner E 1/4 SEC. 4 T. 27N R. 27W P.M.M. County LINCOLN

RECORD: SET A SHALE STONE 13X10X5 9 INS. INTO THE GROUND WITH 1/4 ON WEST FACE, RAISED A MOUND OF STONE, 2' AT BASE AND 1 1/2' HIGH WEST OF CORNER. PTS IMPRACTICAL.

FOUND: STONE WELL SET WITH 1/4 ON WEST FACE AND A LARGE MOUND OF STONE 3' WEST.

MAINTENANCE: REMOVED BRUSH FROM CORNER AREA.

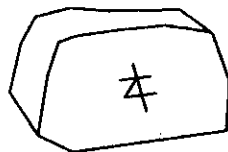
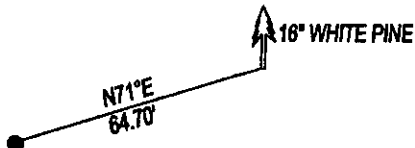
NEW BT

16" WHITE PINE BEARS N71°E 64.70' SCRIBED 1/4 S3 BT.

NO TREES WITHIN LIMITS IN SECTION 4

SET A STEEL POST 3' NORTH OF STONE.

ATTACHED BT TAGS AND PAINTED A RED 6" BAND AND SCRIBE RED



SKETCH OF CORNER

CERTIFICATION

I, DAN CROFT

certify the information shown herein is true and correct.

Signature Ground Party Chief

I, MARC J. CARSTENS

certify that this Corner Record correctly represents work performed by me or under my direction in compliance with the "Corner Recordation Act" (70-22-101, et seq., M.C.A.)

[Signature]  
Signature of Surveyor & Seal



Date: 7-2009 Reg. No. 5940 LS

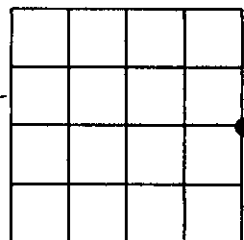
Employer: CARSTENS LAND SURVEYING

Office of Clerk and Recorder, LINCOLN This Corner  
220438 BOOK: CCR CC&R'S PAGE: 11316 Pages: 1  
record" was filed for record o STATE OF MONTANA LINCOLN COUNTY  
was noted on the cross-index: RECORDED: 07/21/2009 9:45 KOI: CC&R'S  
book No. TAMMY D. LAUER CLERK AND RECORDER  
FEE: \$0.00 BY [Signature]  
TO: CARSTENS LAND SURVEYING P.O. BOX 1374, POLSON, MONTANA

Cross Index No. C-13 T. 27N R. 27W PMM

Adopted July 1, 1981, Montana Board of Professional Engineers & Land Surveyors

Sec. 4



• corner this sheet

