

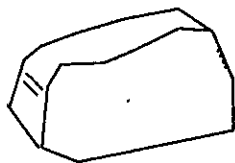
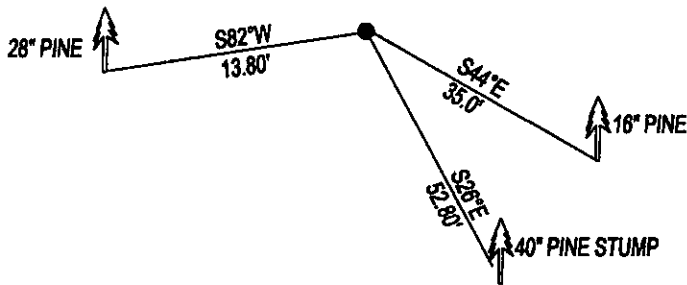
CERTIFIED CORNER RECORDATION

Corner NW SEC. 4 T. 27N R. 27W P.M.M. County LINCOLN

RECORD: SET A LIMESTONE 18X14X12 13 INS. INTO THE GROUND WITH 4 NOTCHES ON EAST AND 2 NOTCHES ON WEST FACE, FROM WHICH:
A 36" PINE BEARS S25°E, 80 LKS. (52.80') MARKED T27N R27W S4 BT.
A 20" PINE BEARS S86°W, 21 LKS. (13.86') MARKED T27N R27W S5 BT.

FOUND: STONE WELL SET WITH 4 NOTCHES ON EAST AND 2 ON WEST FACE, FROM WHICH:
A 40" PINE STUMP BEARS S26°E, 52.80' MARKED T27N R27W S4 BT.
A 28" PINE BEARS S82°W, 13.80' MARKED T27N R27W S5 BT.
A 16" PINE BEARS S44°E, 35.0' SCRIBE OVERGROWN.

MAINTENANCE: REMOVED BRUSH FROM CORNER AREA.
ATTACHED BT TAGS AND PAINTED A RED 6" BAND AND SCRIBE RED



SKETCH OF CORNER

CERTIFICATION

DAN CROFT

I, DAN CROFT, certify the information shown herein is true and correct.

Signature Ground Party Chief

MARC J. CARSTENS

I, MARC J. CARSTENS, certify that this Corner Record correctly represents work performed by me or under my direction in compliance with the "Corner Recordation Act" (70-22-101, et seq., M.C.A.)

[Signature]
Signature of Surveyor & Seal



Date: 7-2009 Reg. No. 5940 LS

Employer: CARSTENS LAND SURVEYING

Office of Clerk and Recorder, County of LINCOLN This "corner

record" was filed for record on

was noted on the cross-index pl

book No. _____

220231 BOOK: CCR CC&R'S PAGE: 11312 Pages: 1

STATE OF MONTANA LINCOLN COUNTY

RECORDED: 07/13/2009 9:25 KOI: CC&R'S

TAMMY D. LAUER CLERK AND RECORDER

FEE: \$0.00

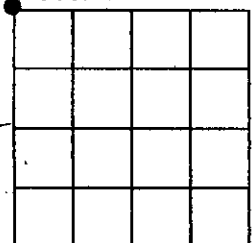
BY: [Signature]

TO: CARSTENS LAND SURVEYING

Cross Index No. A-9 T. 27N R. 27W PMM

Adopted July 1, 1981, Montana Board of Professional Engineers & Land Surveyors

Sec. 4



• corner this sheet