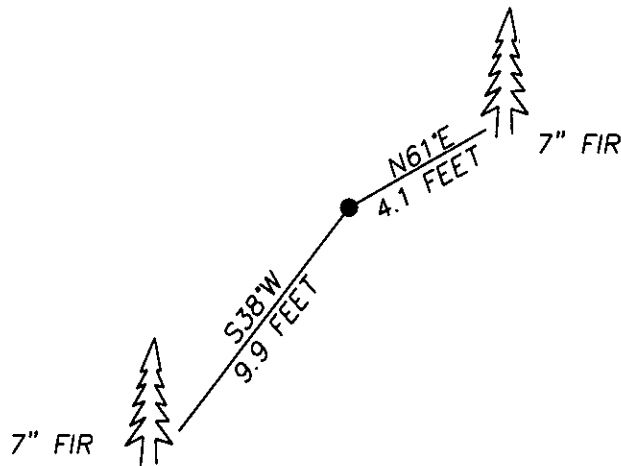


CERTIFIED CORNER RECORDATION

Corner EAST 1/4 SECTION 24 T. 27 N. R. 27 W. P.M.M. LINCOLN County

G.L.O. RECORD: GRANITE STONE, 20" X 10" X 4", 14" IN THE GROUND FOR 1/4 SEC. COR.
 MARKED WITH 1/4 ON THE WEST FACE; FROM WHICH
 A 15" FIR BEARS S60°E 11 LKS. DIST., MARKED 1/4 S. 19, B.T.
 A 10" FIR BEARS N32°W 34 LKS. DIST., MARKED 1/4 S. 24, B.T.

'2006' FOUND: ORIGINAL STONE
 A 7" FIR BEARS N61°E 4.1 FEET DIST., SCRIBED R.M.
 A 7" FIR BEARS S38°W 9.9 FEET DIST., SCRIBED R.M.



SKETCH OF CORNER

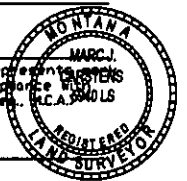
CERTIFICATION

I, VIC ROBINSON
 certify the information shown herein is true and correct.

Vic Robinson
 Signature Ground Party Chief

I, MARC J. CARSTENS
 certify that this Corner Record correctly represents the corner
 performed by me or under my direction in accordance with
 the "Corner Recordation Act" (70-22-101, et seq.)

Marc J. Carstens
 Signature of Surveyor & Seal



Date: 10-16-06 Reg. No. 5940 LS

Employer: CARSTENS LAND SURVEYING

Office of Clerk and Recorder, County of LINCOLN . This 'corner

record' was filed for 198410 BOOK: CCR CC&R'S PAGE: 10950 Pages: 1

STATE OF MONTANA LINCOLN COUNTY

was noted on the CR: RECORDED: 10/27/2006 9:50 KOI: CC&R'S

CORAL M. CUMMINGS CLERK AND RECORDER

book No. FEE: \$0.00

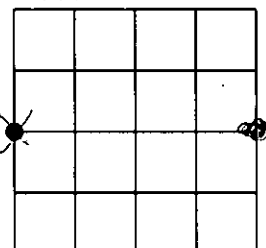
TO: FILED

BY: Jeanne L. Lundy

Cross Index No. P-25 T. 27N R. 27W P.M.M.

Adopted July 1, 1981, Montana Board of Professional Engineers & Land Surveyors

Sec. 24



• corner this sheet