

CERTIFIED CORNER RECORDATION

Corner SOUTHEAST SECTION 24 T. 27 N. R. 27 W. P.M.M. LINCOLN County

G.L.O. RECORD: SHALE STONE, 30" X 8" X 4", 22" IN THE GROUND FOR COR. OF SECS. 19, 24, 25 & 30
MARKED WITH 2 NOTCHES ON THE S. AND 4 NOTCHES ON N. EDGES FROM WHICH

A 8" FIR BEARS N44°E 132 LKS. DIST., MARKED T. 27 N., R. 26 W., S. 19, B.T.

A 6" FIR BEARS S88°E 57 LKS. DIST., MARKED T. 27 N., R. 26 W., S. 30, B.T.

A 18" FIR BEARS S20°W 13 LKS. DIST., MARKED T. 27 N., R. 27 W., S. 25, B.T.

A 12" FIR BEARS N72°W 41 LKS. DIST., MARKED T. 27 N., R. 27 W., S. 24, B.T.

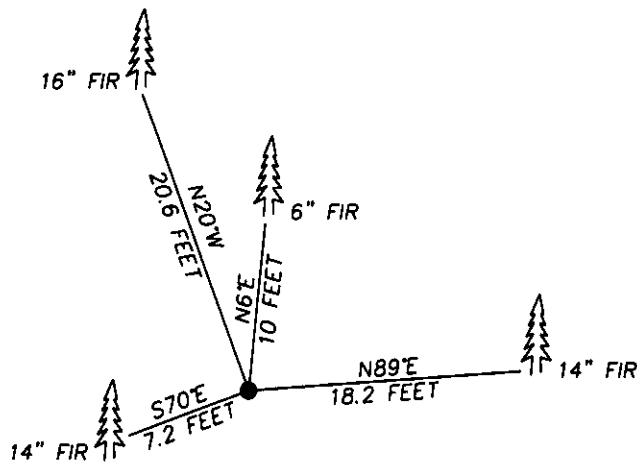
'2006' FOUND: ORIGINAL STONE, NO EVIDENCE OF B.T.'S.

A 14" FIR BEARS S70°W 7.2 FEET DIST., SCRIBED R.M.

A 16" FIR BEARS N20°W 20.6 FEET DIST., SCRIBED R.M.

A 6" FIR BEARS N6°E 10 FEET DIST., SCRIBED R.M.

A 14" FIR BEARS N86°E 18.2 FEET DIST., SCRIBED R.M.



SKETCH OF CORNER

CERTIFICATION

I, VIC ROBINSON

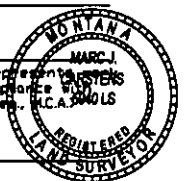
certify the information shown herein is true and correct.

[Signature]
Signature Ground Party Chief

I, MARC J. CARSTENS

certify that this Corner Record correctly represents the corner as performed by me or under my direction in compliance with the 'Corner Recordation Act' (70-22-101, et seq., M.C.A.)

[Signature]
Signature of Surveyor & Seal



Date: 10-16-06 Reg. No. 5940 I.S.

Employer: CARSTENS LAND SURVEYING

Office of Clerk and Recorder, County of LINCOLN . This 'corner

record' was filed for 198409 BOOK: CCR CC&R'S PAGE: 10949 Pages: 1

STATE OF MONTANA LINCOLN COUNTY

was noted on the cross RECORDED: 10/27/2006 9:45 KOI: CC&R'S

book No. _____ CORAL M. CUMMINGS CLERK AND RECORDER

FEE: \$0.00

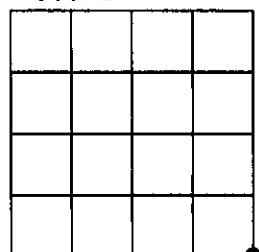
BY: *[Signature]*

TO: FILED ,

Cross Index No. R-25 T. 27N R. 27W P.M.M.

Adopted July 1, 1981, Montana Board of Professional Engineers & Land Surveyors

Sec. 24



• corner this sheet