

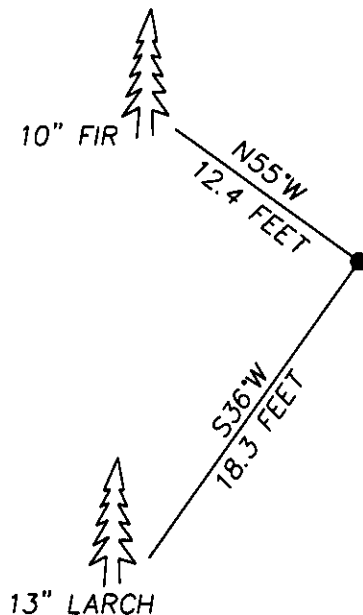
## CERTIFIED CORNER RECORDATION

Corner SOUTH 1/4 SECTION 24 T. 27 N. R. 27 W. P.M.M. LINCOLN County

G.L.O. RECORD: SHALE STONE, 18" X 12" X 3", 13" IN THE GROUND FOR 1/4 SEC. COR.  
MARKED WITH 1/4 ON THE NORTH FACE; FROM WHICH  
A 10" FIR BEARS N10°E 26 LKS. DIST., MARKED 1/4 S. 24, B.T.  
A 12" TAMARACK BEARS S32°W 28 LKS. DIST., MARKED 1/4 S. 25, B.T.

'2006' FOUND: ORIGINAL STONE

A 13" LARCH BEARS S36°W 18.3 FEET DIST., SCRIBED R.M.  
A 10" FIR BEARS N55°W 12.4 FEET DIST., SCRIBED R.M.



SKETCH OF CORNER

### CERTIFICATION

I, VIC ROBINSON

certify the information shown herein is true and correct.

*Vic Robinson*

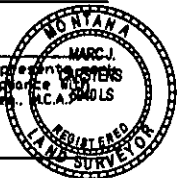
Signature Ground Party Chief

I, MARC J. CARSTENS

certify that this Corner Record correctly represents the corner as performed by me or under my direction in compliance with the "Corner Recordation Act" (70-22-101, et seq., M.C.A.)

*Marc J. Carstens*

Signature of Surveyor & Seal



Date: 10-16-06 Reg. No. 5940 LS

Employer: CARSTENS LAND SURVEYING

Office of Clerk and Recorder, County of LINCOLN . This 'corner

record' was filed for 198408 BOOK: CCR CC&R'S PAGE: 10948 Pages: 1

STATE OF MONTANA LINCOLN COUNTY

was noted on the cross RECORDED: 10/27/2006 9:40 KOI: CC&R'S

book No. \_\_\_\_\_ CORAL M. CUMMINGS CLERK AND RECORDER

FEE: \$0.00

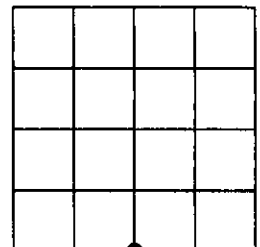
BY: *Coral M. Cummings*

TO: FILED

Cross Index No. R-23 T. 27N R. 27W P.M.

Adopted July 1, 1981, Montana Board of Professional Engineers & Land Surveyors

Sec. 24



• corner this sheet