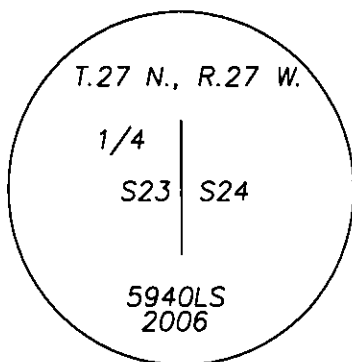
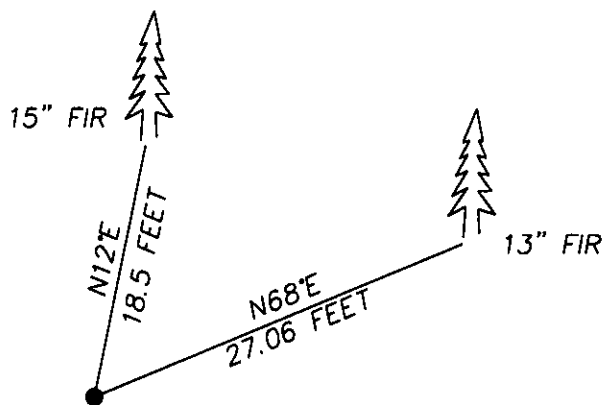


CERTIFIED CORNER RECORDATION

Corner WEST 1/4 SECTION 24 T. 27 N. R. 27 W. P.M.M. LINCOLN County

G.L.O. RECORD: SHALE STONE, 14" X 7" X 6", 10" IN THE GROUND FOR 1/4 SEC. COR.
 MARKED WITH 1/4 ON THE WEST FACE; FROM WHICH
 A 10" FIR BEARS S73°E 88 LKS. DIST., MARKED 1/4 S. 24, B.T.
 A 20" FIR BEARS N75°W 88 LKS. DIST., MARKED 1/4 S. 23, B.T.

'2006' FOUND: NO EVIDENCE OF G.L.O.
 ESTABLISHED 1/4 CORNER BY SINGLE PROPORTION METHODS USING THE NW & SW SECTION CORNERS
 SET 3/12" X 30" AL. CAP, 0.7 FEET OUT OF GROUND.
 A 15" FIR BEARS N12°E 18.5 FEET DIST., SCRIBED R.M.
 A 13" FIR BEARS N68°E 27.06 FEET DIST., SCRIBED R.M.

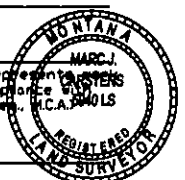


SKETCH OF CORNER

CERTIFICATION

I, VIC ROBINSON
 certify the information shown herein is true and correct.
 Signature Ground Party Chief

I, MARC J. CARSTENS
 certify that this Corner Record correctly represents the corner
 performed by me or under my direction in compliance with
 the 'Corner Recordation Act' (70-22-101, et seq., M.C.A.)
 Signature of Surveyor & Seal



Date: 10-16-06 Reg. No. 5940 LS
 Employer: CARSTENS LAND SURVEYING

Office of Clerk and Recorder, County of LINCOLN This 'corner

record' was filed for re 198406 BOOK: CCR CC&R'S PAGE: 10946 Pages: 1

was noted on the cross STATE OF MONTANA LINCOLN COUNTY
RECORDED: 10/27/2006 9:30 KOI: CC&R'S

book No. CORAL M. CUMMINGS CLERK AND RECORDER

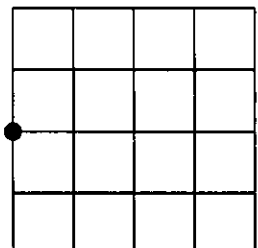
FEE: \$0.00
 TO: FILED

BY: Blanche L. Smith

Cross Index No. P-21 T. 27N R. 27W PMM

Adopted July 1, 1981, Montana Board of Professional Engineers & Land Surveyors

Sec. 24



• corner this sheet