

CERTIFIED CORNER RECORDATION

Corner NORTHWEST SECTION 24 T. 27 N. R. 27 W. P.M.M. LINCOLN County

G.L.O. RECORD: SHALE STONE, 14" X 7" X 6", 10" IN THE GROUND FOR OF SEC. 13, 14, 23 & 24
MARKED WITH 3 NOTCHES ON THE S. AND 1 NOTCH ON E. EDGES FROM WHICH
A 8" FIR BEARS N10°E 31 LKS. DIST., MARKED T. 27 N., R. 27 W., S. 13, B.T.
A 14" FIR BEARS S40°E 120 LKS. DIST., MARKED T. 27 N., R. 27 W., S. 24, B.T.
A 20" FIR BEARS S10°W 122 LKS. DIST., MARKED T. 27 N., R. 27 W., S. 23, B.T.
A 8" FIR BEARS N55°W 103 LKS. DIST., MARKED T. 27 N., R. 27 W., S. 14, B.T.

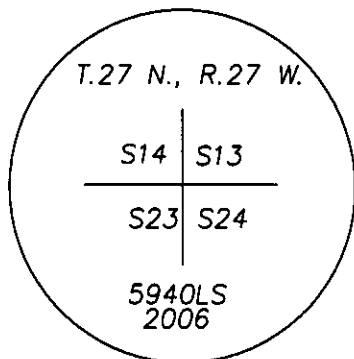
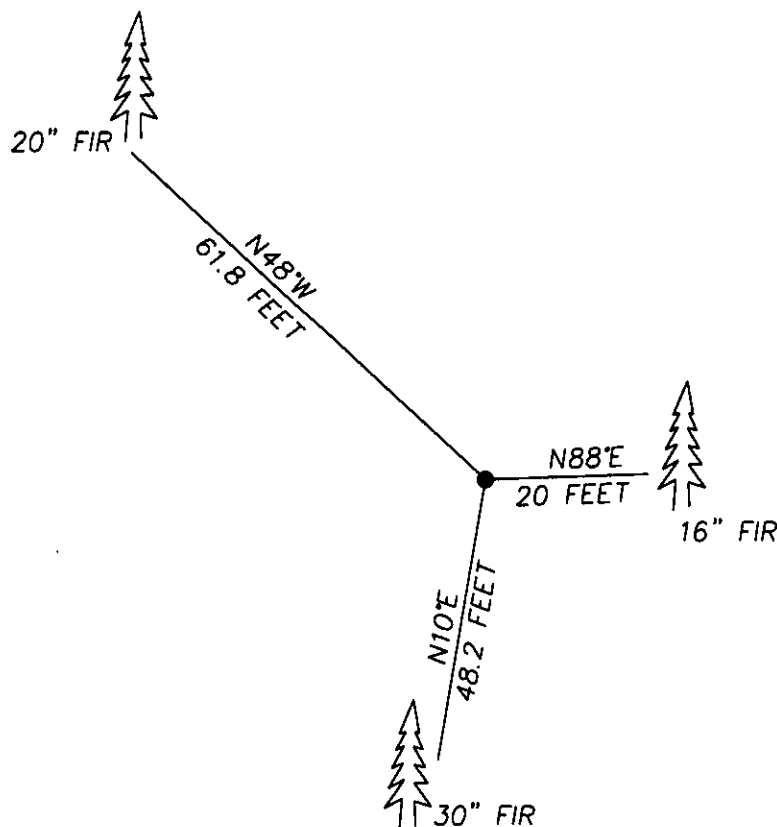
'2006' FOUND: STONE IN 3 PEICES

SET 3/12" X 30" AL. CAP, 0.9 FEET OUT OF GROUND.

A 16" FIR BEARS N88°E 20.0 FEET DIST., 1967 B.T. TAG

A 30" FIR BEARS N10°E 48.2 FEET DIST., 1967 LOCATION POSTER

A 20" FIR BEARS N48°W 61.8 FEET DIST., SCRIBED R.M.



SKETCH OF CORNER

CERTIFICATION

I, VIC ROBINSON

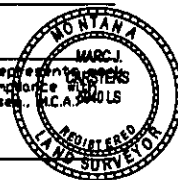
certify the information shown herein is true and correct.

Vic Robinson
Signature Ground Party Chief

I, MARC J. CARSTENS

certify that this Corner Record correctly represents the corner as performed by me or under my direction in compliance with the 'Corner Recordation Act' (70-22-101, et seq., M.C.A.)

Marc J. Carstens
Signature of Surveyor & Seal



Date: 10-16-06 Reg. No. 5940 LS

Employer: CARSTENS LAND SURVEYING

Office of Clerk and Recorder, County of LINCOLN . This 'corner

record' was filed for record 198405 BOOK: CCR CC&R'S PAGE: 10945 Pages: 1

was noted on the cross-index STATE OF MONTANA LINCOLN COUNTY

book No. RECORDED: 10/27/2006 9:25 KOI: CC&R'S

CORAL M. CUMMINGS CLERK AND RECORDER

FEE: \$0.00

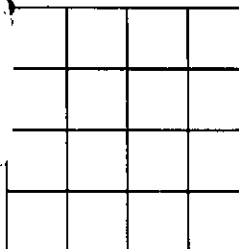
TO: FILED ,

BY: Dianne K. Kneib

Cross Index No. N-21 T. 27N R. 27W P.M.M.

Adopted July 1, 1981, Montana Board of Professional Engineers & Land Surveyors

Sec. 24



• corner this sheet