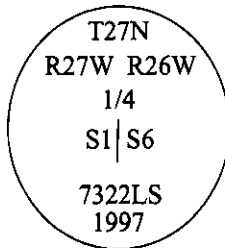


CERTIFIED CORNER RECORDATION

Corner 1/4 **Sec.** 1 & 6 **T.** 27N **R.** 26W **P.M., MT** **Lincoln** **County**
Flathead County

- I. 1900 G.L.O. Original Record by James M. Page et. al: Set a shale stone, 18x12x6 ins., 13 ins. in the ground, for 1/4 sec. cor. mkd. "1/4" on the W. face. Established two bearing trees.
- II. Found original stone, 18x12x6 ins., not set, lying on top of the ground, mkd. "1/4",
 from which:
- A larch, 27 ins. diam., bears S10°E, 15.2 ft. dist., mkd. "1/4 S6 BT" visible. (GLO-record)
 A larch snag, 27 ins. diam., bears N26°W, 29.7 ft. dist., with a healed face. (GLO-rec.-N36°W)
- III. At the corner point, as determined by using dist-dist intersect from found original bearing trees, set a 30 ins. long, 2 1/2 in. diam. aluminum pipe, 20 ins. in the ground, with a 3 1/4 ins. diam. aluminum cap, mkd. as shown below:

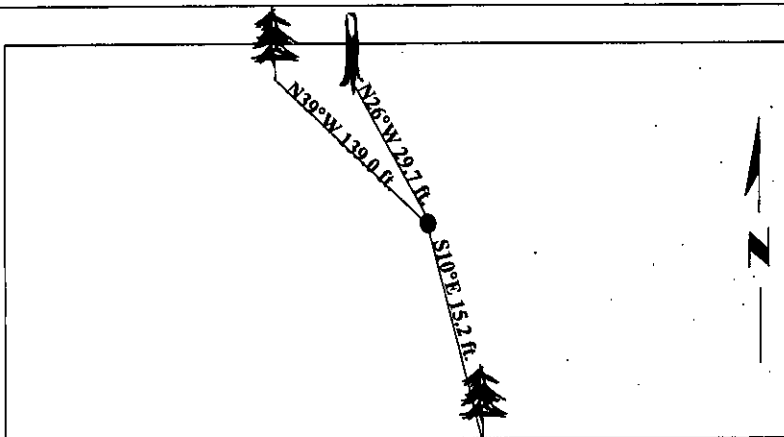


Established one new bearing tree:

A fir, 11 ins. diam., bears N39°W, 139.0 ft. dist., mkd. "1/4 S1 BT".

Painted bearing trees and attached Land Survey Monument and Bearing Tree signs.

Magnetic Declination: 20° East.



SKETCH OF CORNER

CERTIFICATION

I, Thomas M. Hommel
 certify the information shown hereon is true and correct.

Thomas M. Hommel

I, Alvah F. Hughes
 certify that this Corner Record correctly represents work performed by me or under my direction in compliance with the "Corner Recordation Act" (70-22-101, et seq., M.C.A.)

Alvah F. Hughes
 Signature of Surveyor or Seal

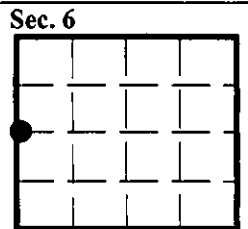
Date: 12/05/97

Reg. No.: 7322LS

Employer: U.S. FOREST SERVICE

Office of Clerk and Recorder, County of Lincoln. This "corner record" was filed for record on 12-26-97 and was noted on the cross-index plat and is assigned page No. 9995 in book No. _____.

Coral M. Cummins
 County Official



● - corner this sheet