

INSTRUCTIONS

1. Original and/or subsequent record used to evaluate the corner position.
2. Description of evidence found, note discrepancies in the record, state method of establishing lost or obliterated corners.
3. Description of monument and accessories set to perpetuate the corner position.
4. Sketch of corner, show all pertinent data which can best be shown in a sketch example, corner marking, topography ties, position of accessories, etc.
5. Certification must be signed and sealed by Land Surveyor registered in the State of Montana.
6. Fill in Cross Index & Section Diagram at bottom of sheet.

CERTIFIED CORNER RECORDATION

Corner NW. C.C. of Sec 7 T. 27 N. R. 26 W. P.M.M. Lincoln County

I. 1900 original G.L.O. record by James M. Page and John P Henselwood: Set a shale stone, 15x8x5 ins., 10 ins. in the ground, for Cor. of Secs. 1,6,7, and 12, mkd. with 5 notches on S. and 1 notch on N. edges. Raise a mound of stone, 2 ft. base, 1 1/2 ft. high, W. of Cor. Pits impracticable, no bearing trees.

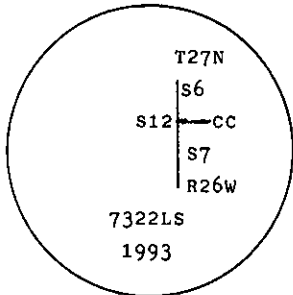
1902 resurvey by Burton S. Adams and William E. Weeks: "For the Cor. of secs. 1,6,7, and 12 which is a stone 8x5x5 ins., above ground, marked and witnessed as described by the Surveyor General, as it will hereafter refer to secs. 1 and 12 only. I efface the marks from S.E. and N.E. bearing trees. Set a lime stone, 20x12x6 ins. 15 ins., above ground, for the Closing Cor. of secs. 6 and 7, mkd. C.C. on E. with 5 grooves on S. and 1 groove on N. faces, from which:

- A pine, 8 ins. diam., bears N62°15'E, 60 lks. dist., mkd. T27N R26W S6 B.T.
- A pine, 8 ins. diam., bears S52°E, 200 lks. dist., mkd. T27N R26W S7 B.T.

II. Found a loosely set stone 11x6 ins., 9 ins. above ground, with 5 grooves on S. face, and 1 groove on N. face, and C.C. on E. face, from which:

- A pine snag, 14 ins. diam., bears N62°E, 37.4 ft. dist., no visible marks. (record 39.6 ft. dist.)
- Sec. Cor. for S1 and S12, North, 83.2 ft. dist.(Record)

III. At the position of found stone, set a 2 1/2 ins. diam., aluminum pipe, 30 ins. long, 24 ins. in the ground with a 3 1/4 ins. diam., aluminum cap, mkd. as shown:



Establish 2 new bearing trees:

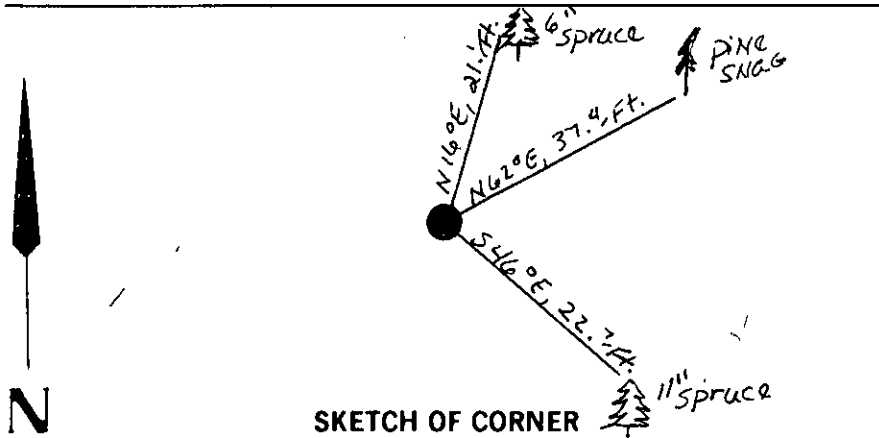
- A spruce, 6 ins. diam., bears N16°E, 21.1 ft. dist., mkd. T27N R26W S6 CC B.T.
- A spruce, 11 ins. diam., bears S46°E, 22.7 ft. dist., mkd. T27N R26W S7 CC B.T.

Bury the original stone alongside and raise a rock collar around new monument.

Painted red bands around the bearing trees and attached Land Survey Monument and Bearing Tree signs.

No guard post set.

Magnetic Declination: 20° East.



CERTIFICATION

I. Thomas M. Hommel
certify the information shown herein is true and correct.
Thomas M. Hommel
Signature Ground Party Chief

I. Alvah F. Hughes
certify that this Corner Record correctly represents work performed by me or under my direction in compliance with the "Corner Recordation Act" (70-22-101, et seq., M.C.A.)
Alvah F. Hughes
Signature of Surveyor & Seal 7322LS REGISTERED

Date: 12/21/93 Reg. No. 7322LS
Employer: U.S. FOREST SERVICE

Office of Clerk and Recorder, County of Lincoln. This "corner record" was filed for record on Jan 12, 1994 was noted on the cross-index plat and is assigned page No. 6108, in book No. _____
Carol M. Cummins
County Official

Sec. 7

E-01 27 N 26 W
Cross Index No. _____ T. _____ R. _____ PMM

• - corner this sheet