

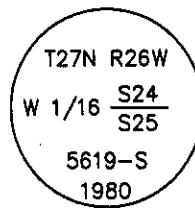
CERTIFIED CORNER RECORDATION

Corner W 1/16 S24 S25 T. 27 N. R. 26 W. P.M.M. FLATHEAD County

I. Record: 1902 Original G.L.O. Subdivision of Township 27 North, Range 26 West, by Burton S. Adams

1980 Certified Corner Recordation by Stephen D. Staab, Reg. No. 5619S: No previous record Set a 2 1/2" x 30" aluminum pipe with cap marked:
Raised a rock mound around corner.
From which:

- A 13" tamarack, bears N35°W, 28.8 feet., marked W 1/16 S24 BT.
- A 7" pine, bears S21°W, 22.7 feet, marked W 1/16 S25 BT.



Attached signs and painted a 6" red band around trees.
Placed a National Forest Boundary post next to the corner.

1994 Certified Corner Recordation by Alvah F. Hughes, Reg. No. 7322LS: 1980 Survey by S.D. Staab, 5619S. Found a 2 1/2 in. diam. aluminum pipe, firmly set, with a 3 1/4 in diam. aluminum cap, mkd. as shown above.

from which:

- A larch snag, 13 ins., bears N35°W, 28.2 ft. dist., mkd. W 1/16 S24 BT.
- A pine, 7 ins., bears S21°W, 22.7 ft. dist., mkd. visible scribing.
- A 6 ft. galvanized steel guard post with Property Boundary decal, NORTH, 3 ft.

Establish one new bearing tree:

- A fir, 7 ins., bears N62°W, 38.3 ft. dist., mkd. W 1/16 S24 BT.

Painted a red band around bearing trees and attached Land Survey Monument and Bearing Tree signs.

Magnetic Declination 20°East

II. Found: A 2 1/2 in. diam. aluminum pipe, 6 ins. above ground, with a 3 1/4 in. diam. aluminum cap marked as shown above

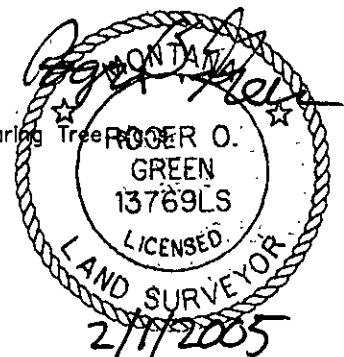
from which:

- A pine snag, 6 ins diam., bears S21°W, 22.7 ft. dist., marked W 1/16 S 25 BT.
- A grand fir snag, 8 ins diam., bears N62°W, 38.3 ft. dist., marked W 1/16 S24 BT.
- A larch snag, 12 ins diam., bears N35°W, 28.8 ft. dist., marked W 1/16 S24 BT.

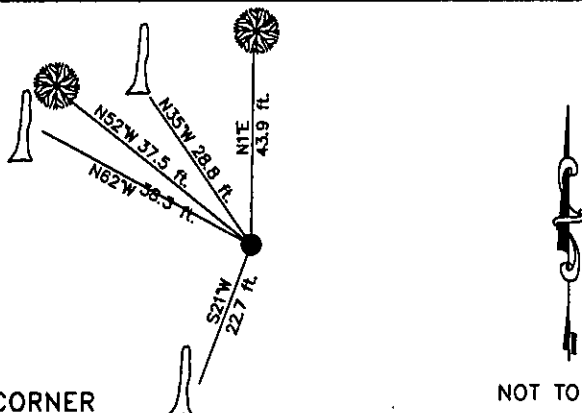
III. Establish two new bearing trees:

- A fir, 15 ins diam., bears N1°E, 43.9 ft. dist., mkd. W 1/16 S24 BT.
- A fir, 7 ins diam., bears N52°W, 37.5 ft. dist., mkd. W 1/16 S24 BT.

Painted a 6 in. red band around bearing trees and attached Land Survey Monument and Bearing Tree signs.



Date of Fieldwork: 7/13/2004
Survey crew: Steve Boyer, Tom Hommel
Magnetic declination: 18° East assumed
Equipment used: Hand compass and loggers tape
U.S. Forest Service, Supervisors Office, 1101 Hwy. 2 West, Libby, MT 59923 (406) 293-6211



SKETCH OF CORNER

NOT TO SCALE

CERTIFICATION

I, Steven A. Boyer 9750LS
certify the information shown herein is true and correct.

Steven A. Boyer
Signature Ground Party Chief

I, Roger O. Green
certify that this Corner Record correctly represents work performed by me or under my direction in compliance with the "Corner Recordation Act" (70-22-101, et seq., M.C.A.)

Roger O. Green
Signature of Surveyor & Seal

Date: 07/13/2004 Reg. No. 13769LS

Employer: U. S. Forest Service

Office of Clerk and Recorder, County of Flathead. This "corner

record" was filed 182250 BOOK: CCR CC&R'S PAGE: 10775 Pages: 1

was noted on STATE OF MONTANA LINCOLN COUNTY

book No. RECORDED: 02/02/2005 9:12 KOI: CC&R'S

CORAL M. CUMMINGS CLERK AND RECORDER

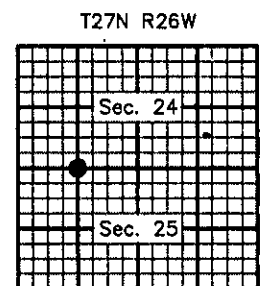
FEE: \$0.00

BY: Heavenly Deputy

TO: FILED

Cross Index No. R-22 T. 27N. R. 26W. P.M., MT

Adopted July 1, 1981, Montana Board of Professional Engineers & Land Surveyors



● corner this sheet