

# CERTIFIED CORNER RECORDATION

Corner S 1/16 Sec. 24 T. 27 N. R. 26 W. P.M.M. FLATHEAD County

I. Record: 1902 Original G.L.O. Subdivision of Township 27 North, Range 26 West, by Burton S. Adams;

1980 Certified Corner Recordation by Stephen D. Staab, Reg. No. 5619S; No previous record.

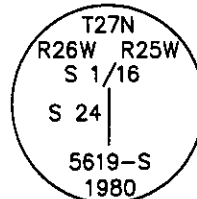
Set a 2 1/2"x30" aluminum pipe with cap marked as shown:

Raise a mound of stone around cap.

From which:

A 8" fir, bears N23°W, 25.8 ft., marked S 1/16 S24 BT.

A 12" tamarack, bears S58°W, 14.5 ft., marked S 1/16 S24 BT.



Attached signs and painted a 6" red band around trees. Placed a National Forest Boundary sign next to the corner.

1994 Certified Corner Recordation by Alvah F. Hughes, Reg. No. 7322LS; Found a 2 1/2 in. diam. aluminum pipe, firmly set, with a 3 1/4 in. diam. aluminum cap, 6 ins. above ground, marked as shown above,

from which:

A larch 16 ins., bears S60°W, 14.8 ft., visible scribing.

A spruce snag, 8 ins. daim., bears N18°W, 26.0 ft., marked S 1/16 BT.

Established one new bearing tree:

A larch 12", bears N24°W, 22.4 ft., marked S 1/16 BT.

Painted a red band around bearing trees and attached Land Survey Monument and Bearing Tree signs.

Set a 6 ft. galvanized steel guard post with Land Survey Monument and Property Boundary decals, WEST, 1 ft.

Magnetic Declination 20° East

II. Found: A 2 1/2 in. diam. aluminum pipe, 8 ins. above ground, with a 3 1/4 in. diam. aluminum cap marked as shown above,

from which:

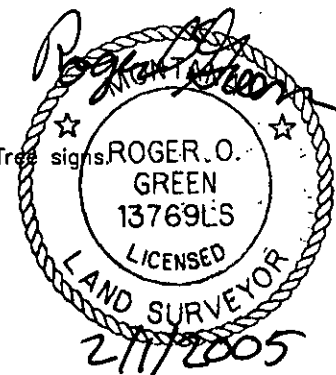
A larch 16 ins., bears S58°W, 14.5 ft., healed face.

A larch snag, 11 ins. daim., bears N24°W, 22.4 ft., marked S 1/16 S24 BT.

III. Established one new bearing tree:

A spruce 9", bears N83°W, 36.4 ft., marked S 1/16 S24 BT.

Painted a red band around bearing trees and attached Land Survey Monument and Bearing Tree signs



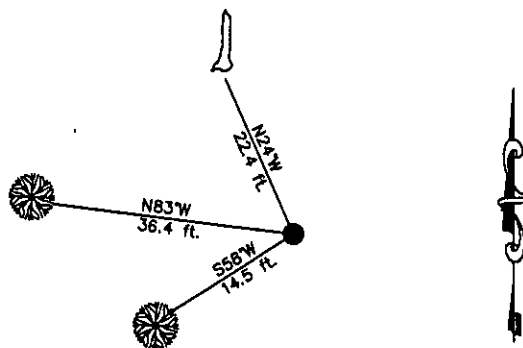
Date of Fieldwork: 7/29/2004

Survey crew: Steve Boyer, Tom Hommel

Magnetic declination: 18° East assumed

Equipment used: Hand compass and loggers tape

U.S. Forest Service, Supervisors Office, 1101 Hwy. 2 West, Libby, MT 59923 (406) 293-6211



SKETCH OF CORNER

NOT TO SCALE

## CERTIFICATION

I, Steven A. Boyer 9750LS

certify the information shown herein is true and correct.

Steven A. Boyer  
Signature Ground Party Chief

I, Roger O. Green

certify that this Corner Record correctly represents work performed by me or under my direction in compliance with the "Corner Recordation Act" (70-22-101, et seq., M.C.A.)

Roger O. Green  
Signature of Surveyor & Seal

Date: 07/29/2004 Reg. No. 13769LS

Employer: U. S. Forest Service

Office of Clerk and Recorder, County of Flathead This "corner

record" was filed 182248 BOOK: CCR CC&R'S PAGE: 10773 Pages: 1

was noted on the STATE OF MONTANA LINCOLN COUNTY

RECORDED: 02/02/2005 9:08 KOI: CC&R'S

book No. CORAL M. CUMMINGS CLERK AND RECORDER

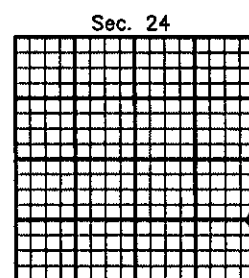
FEE: \$0.00

BY: Jeanie Deam  
deputy

TO: FILED

Cross Index No. Q-25 T. 27N. R. 26W. P.M., MT

Adopted July 1, 1981, Montana Board of Professional Engineers & Land Surveyors



● corner this sheet

# CERTIFIED CORNER RECORDATION

Corner SE Sec. Cor. Sec. 23 T. 27 N. R. 26 W. P.M.M. FLATHEAD County

II. Found: 2 1/2 in. diam. aluminum pipe, 6 ins. above ground, firmly set, with a 3 1/4 in. diam. aluminum cap marked as shown, from which:

- A larch, 26 ins. diam., bears N32°E, 89.8 ft. dist., with 6 24 visible.
- A larch, 11 ins. diam., bears S57°E, 12.5 ft. dist., marked with a healed face.
- A larch, 29 ins. diam., bears S75°W, 91.4 ft. dist., with 6 visible.
- A grand fir snag, 8 ins. diam., bears N77°W, 10.4 ft. dist., marked with a healed face.

T27N R26W  
S23 | S24  
S26 | S25  
5619-S  
1980

III. Establish one bearing tree:

A larch, 9 ins. diam., bears N13°W, 10.1 ft. dist., marked T27N R26W S23 BT.

Painted a 6 in. red band around bearing trees and attached Land Survey Monument and Bearing Tree signs.

Date of Fieldwork: 7/13/2004  
Survey crew: Steve Boyer, Tom Hommel  
Magnetic declination: 18° East assumed  
Equipment used: Hand compass and loggers tape  
U.S. Forest Service, Supervisors Office, 1101 Hwy. 2 West, Libby, MT 59923 (406) 293-6211

Page 2 of 2

## CERTIFICATION

I, Steven A. Boyer 9750LS  
certify the information shown herein is true and correct.

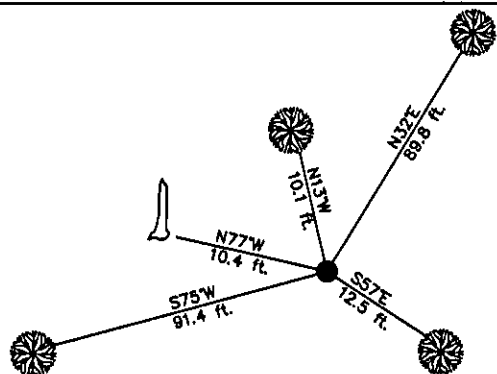
Steven A. Boyer  
Signature Ground Party Chief

I, Roger O. Green  
certify that this Corner Record correctly represents work performed by me or under my direction in compliance with the "Corner Recordation Act" (10-22-101, et seq., M.C.A.)

Roger O. Green  
Signature of Surveyor & Seal

Date: 07/13/2004 Reg. No. 13769LS

Employer: U. S. Forest Service



SKETCH OF CORNER

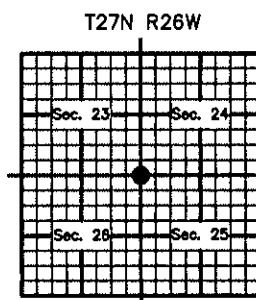
NOT TO SCALE

Office of Clerk and Recorder, County of Flathead This "corner record" was filed for record on \_\_\_\_\_ was noted on the cross-index plat and is assigned page No. \_\_\_\_\_ in book No. \_\_\_\_\_

County Official

Cross Index No. R-21 T. 27N. R. 26W. P.M., MT

Adopted July 1, 1981, Montana Board of Professional Engineers & Land Surveyors



● corner this sheet