

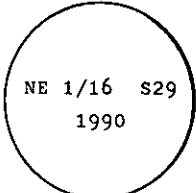
INSTRUCTIONS

1. Original and/or subsequent record used to evaluate the corner position.
2. Description of evidence found, note discrepancies in the record, state method of establishing lost or obliterated corners.
3. Description of monument and accessories set to perpetuate the corner position.
4. Sketch of corner, show all pertinent data which can best be shown in a sketch example, corner marking, topography ties, position of accessories, etc.
5. Certification must be signed and sealed by Land Surveyor registered in the State of Montana.
6. Fill in Cross Index & Section Diagram at bottom of sheet.

**CERTIFIED CORNER RECORDATION**

Corner NE 1/16 T. 26 N. R. 32 W. P.M.M. Sanders County

- I. 1990 BLM records: BLM plat and records not approved at this date.
- II. Found a 2 1/2 ins. diam. iron pipe, 3 ins. above ground, with 3 1/4 ins. diam., BLM brass cap, marked as shown:

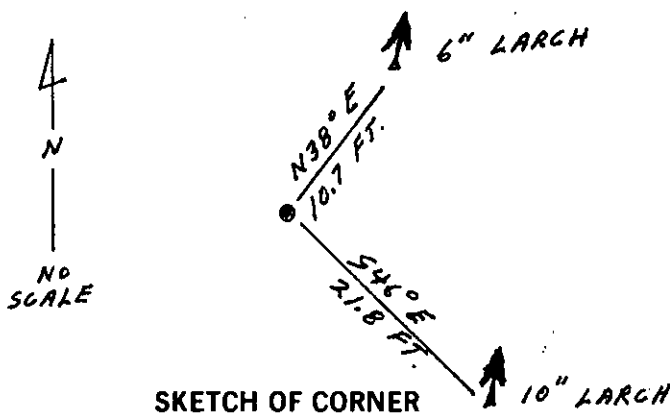
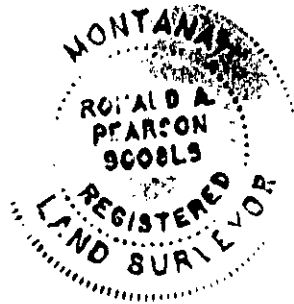


From which:

- A larch, 6 ins. diam., bears N38° E, 10.7 ft. dist., mkd. NE 1/16 S29 BT.
- A larch, 10 ins. diam., bears S46° E, 21.8 ft. dist., mkd. NE 1/16 S29 BT.

Magnetic declination: 20° East

- III. Painted red bands around the bearing trees and attached Land Survey Monument and Bearing Tree signs.



SKETCH OF CORNER

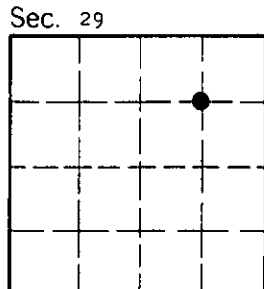
CERTIFICATION

I, Kevin A. Todd  
 certify the information shown herein is true and correct.  
Kevin A. Todd  
 Signature Ground Party Chief

I, Ronald A. Pearson  
 certify that this Corner Record correctly represents work performed by me or under my direction in compliance with the "Corner Recordation Act" (70-22-101, et seq., M.C.A.)  
Ronald A. Pearson  
 Signature of Surveyor & Seal

Date: 12/17/92 Reg. No. 9008LS  
 Employer: U. S. FOREST SERVICE

Office of Clerk and Recorder, County of Lincoln. This "corner record" was filed for record on 1-4-93 was noted on the cross-index plat and is assigned page No. 5284, in book No. \_\_\_\_\_, in Coral M Cunningham County Official



Cross Index No. S-8 T. 26 N R. 32W PMM

• - corner this sheet