

INSTRUCTIONS

1. Original and/or subsequent record used to evaluate the corner position.
2. Description of evidence found, note discrepancies in the record, state method of establishing lost or obliterated corners.
3. Description of monument and accessories set to perpetuate the corner position.
4. Sketch of corner, show all pertinent data which can best be shown in a sketch example, corner marking, topography ties, position of accessories, etc.
5. Certification must be signed and sealed by Land Surveyor registered in the State of Montana.
6. Fill in Cross Index & Section Diagram at bottom of sheet.

CERTIFIED CORNER RECORDATION

Corner C-W-E-NE 1/256 S29 T. 26 N. R. 32 W. P.M.M. Sanders County

I. 1990 BLM records: BLM plat and records not approved at this date.

II. Found a 2 1/2 ins. diam. iron pipe, 4 ins. above ground, with 3 1/4 ins. diam., BLM brass cap, marked as shown:

C-W-E-NE 1/256
S29
1990

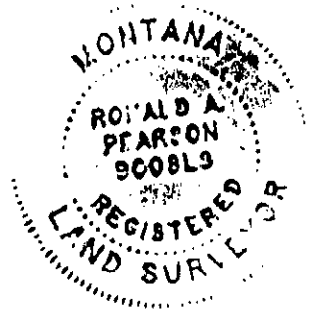
From which:

A pine, 21 ins. diam., bears N88°E, 14.9 ft. dist., face pitched over.

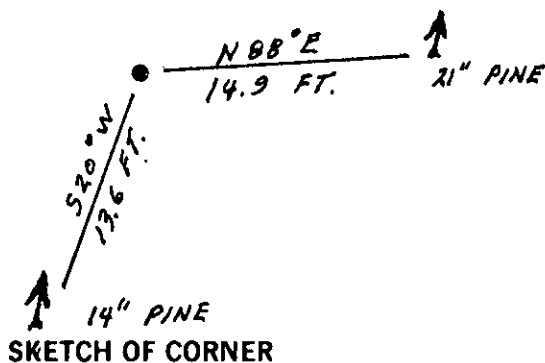
A pine, 14 ins. diam., bears S20°W, 13.6 ft. dist., mkd. C-W-E-NE 1/256 S29 BT.

Magnetic declination: 20° East

III. Painted red bands around the bearing trees and attached Land Survey Monument and Bearing Tree signs.



4
N
NO
SCALE



SKETCH OF CORNER

CERTIFICATION

Kevin A. Todd

I, Kevin A. Todd
certify the information shown herein is true and correct.

Kevin A. Todd
Signature Ground Party Chief

Ronald A. Pearson

I, Ronald A. Pearson
certify that this Corner Record correctly represents work performed by me or under my direction in compliance with the "Corner Recordation Act" (70-22-101, et seq., M.C.A.)

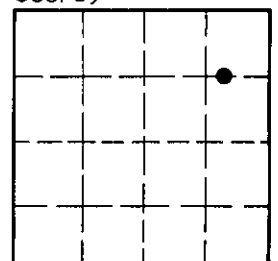
Ronald A. Pearson
Signature of Surveyor & Seal

Date: 12/17/92 Reg. No. 9008LS

Employer: U. S. FOREST SERVICE

Office of Clerk and Recorder, County of Lincoln. This "corner record" was filed for record on 1-4-93 was noted on the cross-index plat and is assigned page No. 5222, in book No. Coral M. Cummings by BLS County Official

Sec. 29



• - corner this sheet

Cross Index No. S-8.25 T. 26 N. R. 32 W. PMM