

CERTIFIED CORNER RECORDATION

Corner 3 MS 7368A Sec. 13 T. 26 N R. 31 W P.M., MT Lincoln County

I. 1904 G.L.O. original survey by Abram L. Jaqueth: Set a quartzite stone, 24 x 8 x 8 ins., 20 ins. deep, chiseled 3-7368A, from which:

A balsam fir, 12 ins. diam., bears S12°25'W, 74.0 ft. dist., scribed "B.T. 3-7368A".
A balsam fir, 8 ins. diam., bears S56°08'W, 62.3 ft. dist., scribed "B.T. 3-7368 A".

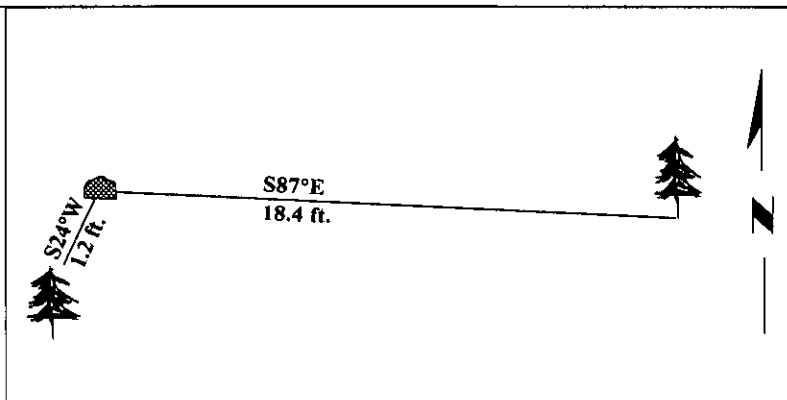
II. Found a stone, firmly set, 8 x 5 ins., 7 ins. above ground, chiseled "3/7368A" on NE face. No evidence of original bearing trees found, due to extreme wild fire activity.

III. Established two new bearing trees:

A hemlock, 11 ins. diam., bears S87°E, 18.4 ft. dist., scribed "3 MS 7368A BT."
A hemlock, 6 ins. diam., bears S24°W, 1.2 ft. dist., scribed "X" "BT."
(Distances measured to faces of B.T.'s).

Painted bearing trees and attached Land Survey Monument and Bearing Tree signs.

Magnetic Declination: 20° East.



SKETCH OF CORNER

CERTIFICATION

I, Rex O. Rice
certify the information shown herein is true and correct.

Rex O. Rice

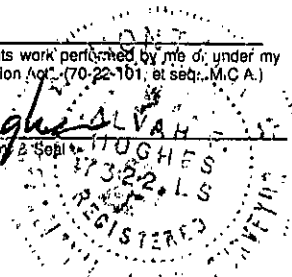
I, Alvah F. Hughes
certify that this Corner Record correctly represents work performed by me or under my direction in compliance with the "Corner Recordation Act" (70-22-101, et seq., M.C.A.)

Alvah F. Hughes
Signature of Surveyor

Date: 11/25/96

Reg. No.: 7322LS

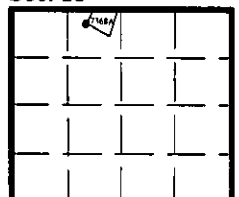
Employer: U.S. FOREST SERVICE



Office of Clerk and Recorder, County of LINCOLN. This "corner record" was filed for record on FEB 3, 1997 was noted on the cross-index plat and is assigned page No. 9130 in book No. CORAL M. CUMMINGS

County Official *By [Signature]*

Sec. 13



• - corner this sheet

Cross Index No. 3 MS 7368A T. 26 N R. 31 W P.M., MT