

CERTIFIED CORNER RECORDATION

Corner 4 MS 7366A Sec. 12 T. 26 N R. 31 W P.M., MT Lincoln County

I. 1904 G.L.O. original survey by Abram L. Jaqueth: Set a quartzite stone, 24 x 12 x 8 ins., 20 ins. deep, chiseled 4-7366A, from which:

- A balsam fir, 8 ins. diam., bears N56°12'E, 4.2 ft. dist., scribed "B.T. 4-7366 A".
- A hemlock, 14 ins. diam., bears S60°35'W, 35.2 ft. dist., scribed "B.T. 4-7366 A".

II. Found a stone, firmly set, 9 x 6 ins., 7 ins. above ground, chiseled "4/7368" on the South face and "X" on top (Note: Stone was incorrectly marked), from which:

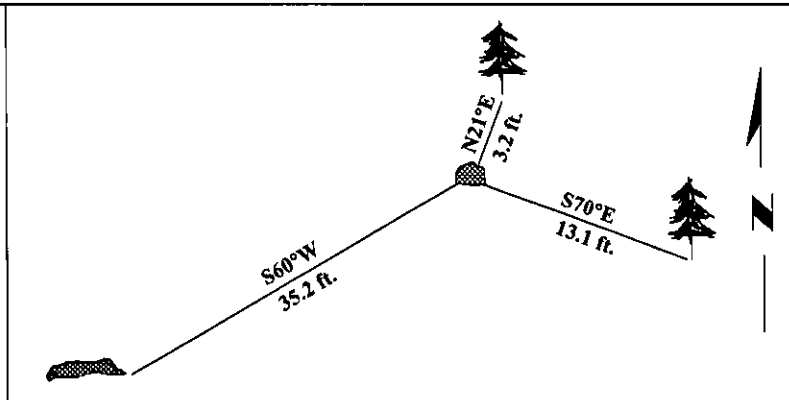
Rotten remains, bears S60°W, 35.2 ft. dist., with a possible face (no scribing visible).

III. Established two new bearing trees:

- A hemlock, 8 ins. diam., bears N21°E, 3.2 ft. dist., scribed "4 MS 7366A BT."
 - A hemlock, 10 ins. diam., bears S70°E, 13.1 ft. dist., scribed "4 MS 7366A BT."
- (Distances measured to faces of B.T.'s).

Painted bearing trees and attached Land Survey Monument and Bearing Tree signs.

Magnetic Declination: 20° East.

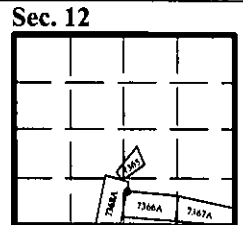


SKETCH OF CORNER

CERTIFICATION I, <u>Rex O. Rice</u> certify the information shown herein is true and correct. <i>Rex O. Rice</i>	
I, <u>Alvah F. Hughes</u> certify that this Corner Record correctly represents work performed by me, or under my direction in compliance with the "Corner Recordation Act" (70-22-101, et seq., M.C.A.) <i>Alvah F. Hughes</i> Signature of Surveyor & Seal	
Date: <u>11/25/96</u> Reg. No.: <u>7322LS</u> Employer: <u>U.S. FOREST SERVICE</u>	
(Empty space for additional notes or signatures)	

Office of Clerk and Recorder, County of LINCOLN. This "corner record" was filed for record on FEB 3, 1997 was noted on the cross-index plat and is assigned page No. 9128, in book No. _____

CORAL M. CUMMINGS *[Signature]*
County Official



● - corner this sheet