

CERTIFIED CORNER RECORDATION

Corner USLM 7365 Sec. 12 T. 26 N R. 31 W P.M., MT Lincoln County

I. 1904 G.L.O. original survey by Abram L. Jaqueth: Set a 7/8 x 16 ins. steel rod, marked "USLM No. 7365" with a cross (X) on the top end, 8 ins. deep in a slate ledge in place, 50 x 75 x 100 ft. above ground, on the easterly point of a ridge, from which:

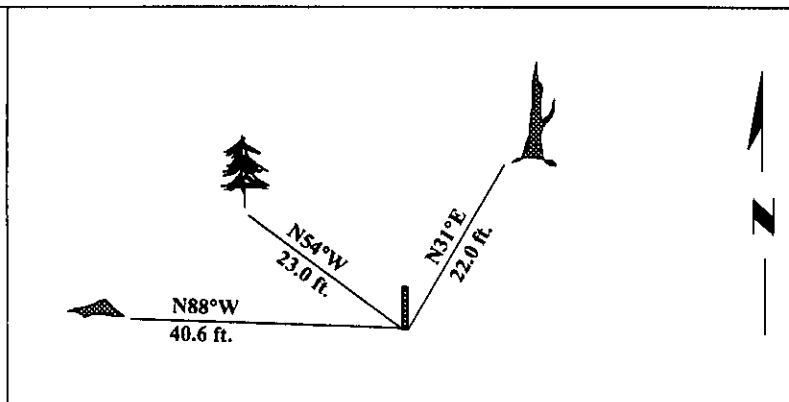
- A pine, 15 ins. diam., bears N30°52'E, 22.0 ft. dist., scribed "USLM 7365 BT".
- A fir, 10 ins. diam., bears N88°35'W, 40.6 ft. dist., scribed "USLM 7365 BT".
- A fir, 10 ins. diam., bears N53°42'W, 23.0 ft. dist., scribed "USLM 7365 BT".
- A fir, 10 ins. diam., bears N22°35'W, 24.3 ft. dist., scribed "USLM 7365 BT".

II. Found a 7/8 ins. diam. steel rod, firmly set in stone ledge, with "X" engraved in top end, 6 ins. above ground, from which:

- A snag, 16 ins. diam., bears N31°E, 22.0 ft. dist., with visible scribing.
- A rotten root crown, bears N88°W, 40.6 ft. dist., with no visible scribing.
- A fir, 15 ins. diam., bears N54°W, 23.0 ft. dist., with visible scribing.

Painted bearing trees and attached Land Survey Monument and Bearing Tree signs.

Magnetic Declination: 20° East.



SKETCH OF CORNER

CERTIFICATION	
I, <u>Rex O. Rice</u>	certify the information shown herein is true and correct.
<u>Rex O. Rice</u>	
I, <u>Alvah F. Hughes</u>	certify that this Corner Record correctly represents work performed by me or under my direction in compliance with the "Corner Recordation Act" (70-22-101, et seq., M.C.A.)
<u>Alvah F. Hughes</u>	
Date: <u>11/25/96</u>	Signature of Surveyor & Seal
Reg. No.: <u>7322LS</u>	
Employer: <u>U.S. FOREST SERVICE</u>	

Office of Clerk and Recorder, County of LINCOLN. This "corner record" was filed for record on FEB 3, 1997 was noted on the cross-index plat and is assigned page No. 9127, in book No. CORAL M. CUMMINGS County Official [Signature]

