

INSTRUCTIONS

1. Original and/or subsequent record used to evaluate the corner position.
2. Description of evidence found, note discrepancies in the record, state method of establishing lost or obliterated corners.
3. Description of monument and accessories set to perpetuate the corner position.
4. Sketch of corner, show all pertinent data which can best be shown in a sketch example, corner marking, topography ties, position of accessories, etc.
5. Certification must be signed and sealed by Land Surveyor registered in the State of Montana.
6. Fill in Cross Index & Section Diagram at bottom of sheet.

CERTIFIED CORNER RECORDATION

Corner WC N 1/4 sec. cor. of Sec. 9 T. 26 N. R. 30 W. P.M.M. Lincoln County

I. 1903 G.L.O. original record by F. I. HUBBARD: Set a quartz stone and 2 bearing trees as referenced below.

1964 B.L.M. remonumentation record by R. L. LARIMER: The 1/4 sec. cor. of secs. 4 and 9, monumented with a quartz stone, 14x10x5 ins., firmly set and mkd. 1/4 on the N. face, and witnessed by the remains of one of the original bearing trees:

A decayed stump, bears S37 1/2° E, 29 lks. dist. (G.L.O. record)
No evidence found of the orig. G.L.O. bearing tree at N34° E, 13 lks dist.

At the cor. point, set an iron post, 2 1/2 ins. diam., 30 ins. long, 27 ins. in the ground, with brass cap marked as shown below, and established two new bearing trees:

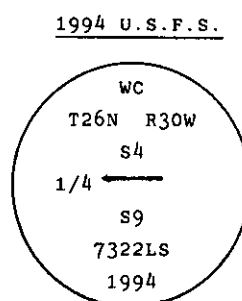
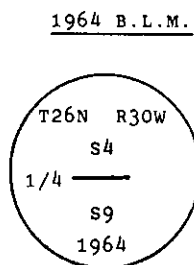
A larch, 6 ins. diam., bears N48° E, 17 lks. dist., mkd. 1/4 S4 BT.
A pine, 8 ins. diam., bears S43° E, 33 lks. dist., mkd. 1/4 S9 BT.

Bury the original stone alongside the iron pipe.

II. Due to a change in the creek channel, all evidence of monument and bearing trees have been destroyed.

III. The position of the N. 1/4 cor. of sec. 9, as determined by single proportionate measurement, falls in the creek bed, therefore I establish a witness corner, on line, S85° 23' 28" E magnetic, 70.0 ft. dist. from 1/4 cor. position. (orig. G.L.O. line bears S89° 55' W)

Witness Corner: Set a 2 1/2 in. diam., 30 in. long alum. pipe with a 3 1/4 in. aluminum cap, mkd. as shown:



Established two new bearing trees:

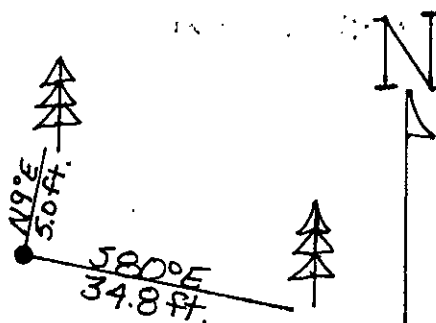
A fir, 4 ins. diam., bears N9° E, 5.0 ft. dist., mkd. WC BT with an "X" snowblaze.
A larch, 9 ins. diam., bears S80° E, 34.8 ft. dist., mkd. WC BT with an "X" snowblaze.

Painted a red band around bearing trees and attached Land Survey Monument and Bearing Tree signs.

Magnetic Declination: 20° East.

— SEE REVERSE FOR SKETCH —

SKETCH OF CORNER



CERTIFICATION

I, Kenneth R. Kern
certify the information shown herein is true and correct.

Kenneth R. Kern
Signature Ground Party Chief

I, Alvah F. Hughes
certify that this Corner Record correctly represents work performed by me or under my direction in compliance with the "Montana Recordation Act" (70-22-101, et seq., M.C.A.)

Alvah F. Hughes
Signature of Surveyor & Seal

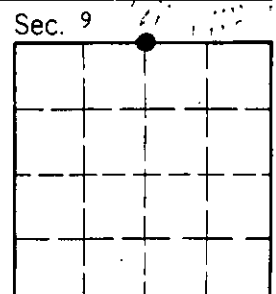
Date: 12/13/94 Reg. No. 7322LS

Employer: U.S. FOREST SERVICE

Office of Clerk and Recorder, County of Lincoln This "corner record" was filed for record on 4-27-95 was noted on the cross-index plat and is assigned page No. 7090, in book No. Local M. Cummings Bdr 3

County Official

Cross Index No. E-11 T. 26N R. 30W PMM



• - corner this sheet

