

**INSTRUCTIONS**

1. Original and/or subsequent record used to evaluate the corner position.
2. Description of evidence found, note discrepancies in the record, state method of establishing lost or obliterated corners.
3. Description of monument and accessories set to perpetuate the corner position.
4. Sketch of corner, show all pertinent data which can best be shown in a sketch example, corner marking, topography ties, position of accessories, etc.
5. Certification must be signed and sealed by Land Surveyor registered in the State of Montana.
6. Fill in Cross Index & Section Diagram at bottom of sheet.

**CERTIFIED CORNER RECORDATION**

Corner S 1/4 of Sec. 26 T. 26 N. R. 30 W. P.M.M. Lincoln County

I. 1916 original G.L.O. record by F. WALTERS: Set a shale stone, 16x12x5 ins. 10 ins. in the ground, for 1/4 sec. cor., marked 1/4 on W. face.

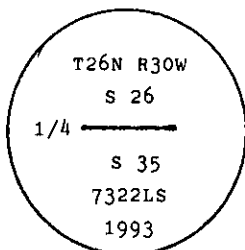
Raise a mound of stone 2 ft. base, 1 1/2 ft. high, N. of corner.

No bearing trees established.

II. Found a firmly set stone, 16x12x5 ins., 5 ins. above ground, marked 1/4 on N. face, from which:

Mound of stone 2 ft. N of corner.

III. At the position of set stone, set a 2 1/2 ins. dia. aluminum pipe, 30 ins. long, 25 ins. in the ground, with a 3 1/4 in. diam. aluminum cap, marked as shown:



Bury original stone alongside new monument and raise a collar of stone around pipe.

Established two new bearing trees:

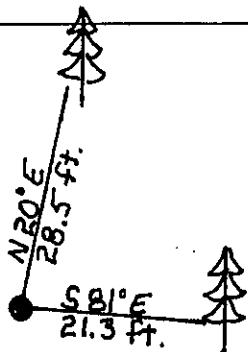
A pine, 9 ins. dia., bears N20° E, 28.5 ft. dist., mkd. 1/4 S26 BT.

A larch, 10 ins. dia., bears S81° E, 21.3 ft. dist., mkd. 1/4 S35 BT.

Painted a red band around bearing trees and attached Land Survey Monument and Bearing Tree signs.

No guard post established.

Magnetic Declination: 20° East.



**SKETCH OF CORNER**



**CERTIFICATION**

Kenneth Kern

I, \_\_\_\_\_  
certify the information shown herein is true and correct.

*Kenneth R Kern*  
Signature Ground Party Chief

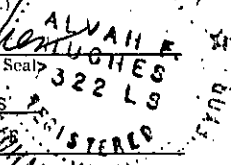
Aivah F. Hughes

I, \_\_\_\_\_  
certify that this Corner Record correctly represents work performed by me or under my direction in compliance with the "Corner Recordation Act" (70-22-101, et seq., M.C.A.)

*Aivah F. Hughes*  
Signature of Surveyor & Seal

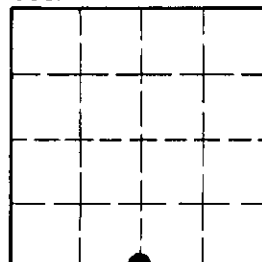
Date: 12/15/93 Reg. No. 7322LS

Employer: U. S. FOREST SERVICE



Office of Clerk and Recorder, County of Lincoln. This "corner record" was filed for record on Jan 19, 1993 was noted on the cross-index plat and is assigned page No. 5327, in book No. \_\_\_\_\_, in Coral M. Cunningham Esq. P.S. County Official

Sec. 26



Cross Index No. V-19 T. 26 N R. 30 W P.M.M.

• - corner this sheet