

INSTRUCTIONS

1. Original and/or subsequent record used to evaluate the corner position.
2. Description of evidence found, note discrepancies in the record, state method of establishing lost or obliterated corners.
3. Description of monument and accessories set to perpetuate the corner position.
4. Sketch of corner, show all pertinent data which can best be shown in a sketch example, corner marking, topography ties, position of accessories, etc.
5. Certification must be signed and sealed by Land Surveyor registered in the State of Montana.
6. Fill in Cross Index & Section Diagram at bottom of sheet.

CERTIFIED CORNER RECORDATION

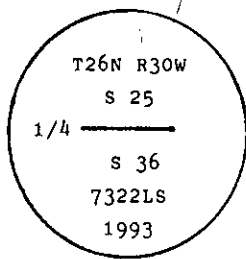
Corner S 1/4 Cor. of Sec. 25 T. 26 N. R. 30 W. P.M.M. Lincoln County

I. 1916 original G.L.O. record by F. WALTERS: Set a limestone, 15x12x5 ins. 10 ins. in the ground, for 1/4 sec. cor., marked 1/4 on W. face, from which:

- A pine, 8 ins. diam., bears N 5 1/2° E, 17 lks. dist., marked 1/4 S 25 BT.
- A pine, 10 ins. diam., bears S 19 1/2° W, 29 lks. dist., marked 1/4 S 36 BT.

II. No original corner monument found nor original bearing trees, due to past fire.

III. At the position determined by single proportion measurement, set a 2 1/2 ins. dia. aluminum pipe, 30 ins. long, 24 ins. in the ground, with a 3 1/4 in. diam. aluminum cap, marked as shown:



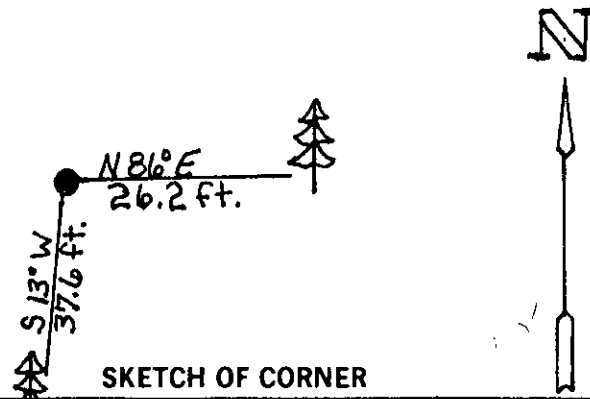
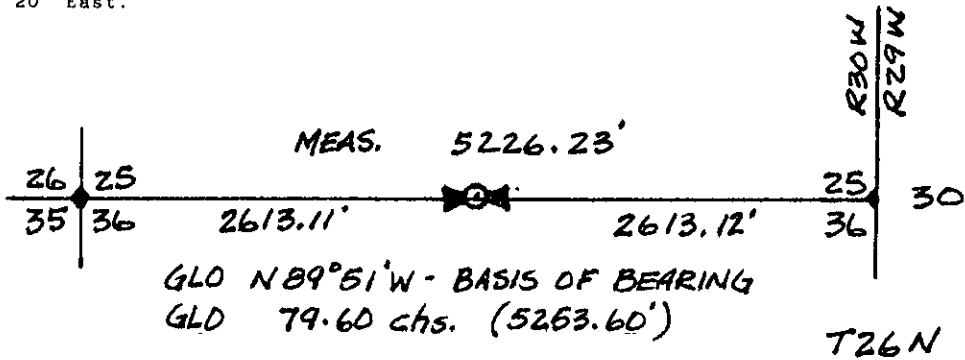
Established two new bearing trees:

- A larch, 5 ins. diam., bears N86° E, 26.2 ft. dist., mkd. 1/4 S36 BT.
- A larch, 11 ins. diam., bears S13° W, 37.6 ft. dist., mkd. 1/4 S25 BT.

Painted a red band around bearing trees and attached Land Survey Monument and Bearing Tree signs.

Set a 6 ft. galvanized steel guard post with Land Survey Marker and Property Boundary decals, WEST, 3 ft.

Magnetic Declination: 20° East.

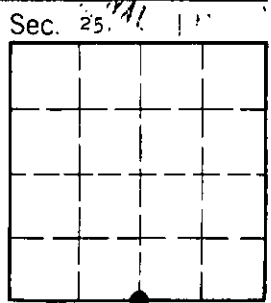


CERTIFICATION

I, Kenneth K. Kern
 certify the information shown herein is true and correct.
Kenneth R Kern
 Signature Ground Party Chief

I, Alvah F. Hughes
 certify that this Corner Record correctly represents work performed by me or under my direction in compliance with the "Corner Recordation Act" (70-22-101, et seq., M.C.A.)
Alvah F. Hughes
 Signature of Surveyor Seal HUGHES
 Date: 12/15/93 Reg. No. 7322 DS 7322 LS
 Employer: U. S. FOREST SERVICE

Office of Clerk and Recorder, County of Lincoln. This "corner record" was filed for record on Jan 19, 1993 was noted on the cross-index plat and is assigned page No. 5324, in book No. _____
Carol M. Cumming By DB
 County Official



Cross Index No. V-23 T. 26 N R. 30 W P.M.M. • - corner this sheet