

INSTRUCTIONS

1. Original and/or subsequent record used to evaluate the corner position.
2. Description of evidence found, note discrepancies in the record, state method of establishing lost or obliterated corners.
3. Description of monument and accessories set to perpetuate the corner position.
4. Sketch of corner, show all pertinent data which can best be shown in a sketch example, corner marking, topography ties, position of accessories, etc.
5. Certification must be signed and sealed by Land Surveyor registered in the State of Montana.
6. Fill in Cross Index & Section Diagram at bottom of sheet.

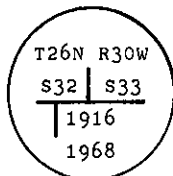
CERTIFIED CORNER RECORDATION

Corner Sec. Cor. of Secs. 32 & 33 only T. 26 N. R. 30 W. Lincoln County

I. 1916 G.L.O. record by S. Frank Walters et al: Set a iron post monument and mound of stone.

1968 B.L.M. remonumentation record by Woodrow E. Damn et al: "The cor. of secs. 32 and 33 on the S. bdy. of the tp., monumented with an iron post, 36 ins. long, 3 ins. diam., loosely set, 10 ins. in the ground, and witnessed by a mound of stone N. Add additional marks 1968 to brass cap.

At corner point, reset the iron post, 26 ins. in the ground, with brass cap mkd.



from which:

The new bearing trees:

A pine, 9 ins. diam., bears N5 1/2° E, 24 lks. dist., mkd. T26N R30W S33 BT.

A pine, 5 ins. diam., bears N82 1/4° W, 42 lks. dist., mkd. T26N R30W S32 BT.

Raise a collar of stone, 4 ft. diam., around the iron post."

II. Found a 3 ins. diam. iron pipe, 12 ins. above the ground, with 3 1/4 ins. diam. G.L.O. brass cap, marked as shown above, from which:

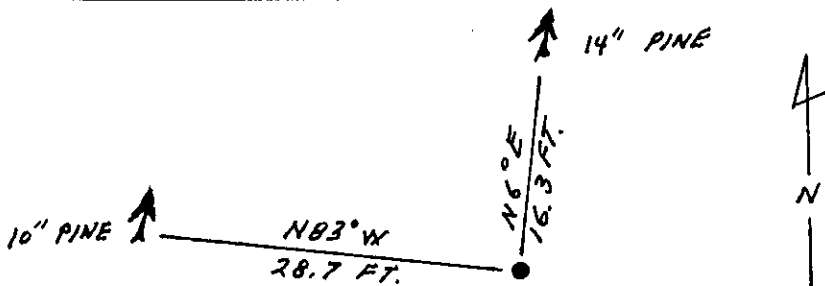
A pine, 14 ins. diam., bears N6° E, 16.3 ft. (25 lks.) dist., healed face.

A pine, 10 ins. diam., bears N83° W, 28.7 ft. (43 lks.) dist., healed face.

III. Painted red bands around the bearing trees and attached Land Survey Monument and Bearing Tree signs.

Build rock collar around pipe.

Magnetic Declination: 20° East



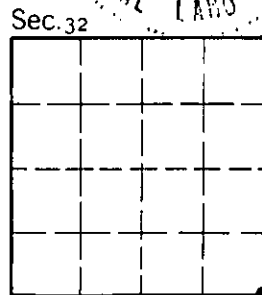
SKETCH OF CORNER

| | |
|--|------------------------|
| CERTIFICATION | |
| I, <u>Thomas M. Hommel</u> | |
| certify the information shown herein is true and correct | |
| <u>Thomas M. Hommel</u> | |
| Signature of Ground Party Chief | |
| I, <u>Alvah F. Hughes</u> | |
| certify that this Corner Record correctly represents work performed by me or under my direction in compliance with the "Corner Recordation Act" (70-22-101, et seq., M.C.A.) | |
| <u>Alvah F. Hughes</u> | |
| Signature of Surveyor & Seal | |
| Date: <u>12/3/92</u> | Reg. No. <u>7322LS</u> |
| Employer: <u>U.S. FOREST SERVICE</u> | |

Office of Clerk and Recorder, County of Lincoln. This "corner record" was filed for record on 12-14-92 was noted on the cross-index plat and is assigned page No. 5137, in book No. Coral M Cummings by tbb

County Official

Z-09 26 N 30 W
Cross Index No. T. R. PMM



• - corner this sheet