

## INSTRUCTIONS

1. Original and/or subsequent record used to evaluate the corner position.
2. Description of evidence found, note discrepancies in the record, state missing or obliterated corners.
3. Description of monument and accessories to perpetuate corner position.
4. Sketch of corner, show all pertinent topography, position of accessories, which can be shown in a sketch example, corner marking.
5. Certification must be signed and sealed by Land Surveyor registered in the State of Montana.
6. Fill in Cross Index & Section Diagram at bottom of sheet.

## CERTIFIED CORNER RECORDATION

Cor Sec 34 and 35 T27N 30W  
 Corner Cor Sec 3 and 2 T. 26N R. 30W P.M.M. Lincoln County

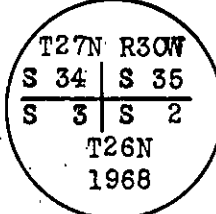
1. 1900 GLO Record: Set a limestone 22 x 16 x 5 ins, 16 ins in the ground for corner of Secs 2, 3, 34 & 35, mkd w/2 notches on E and 4 notches on W edges, from which

A pine, 16 ins diam, bears N 37° 30' E 22 lks dist, marked  
 T 27 N R 30 W S 35 BT  
 A pine, 18 ins diam, bears S 0° 15' E 50 lks dist, marked  
 T 26 N R 30 W S 2 BT  
 A fir, 16 ins diam, bears S 44° 45' W 81 lks dist, marked  
 T 26 N R 30 W S 3 BT  
 A pine 30 ins diam, bears N 42° 15' W 71 lks dist, marked  
 T 27 N R 30 W S 34 BT

## 1968 BLM Remonumentation Record:

At the corner point

Set an iron post, 30 ins long, 2½ ins diam, 24 ins in the ground, with brass cap mkd



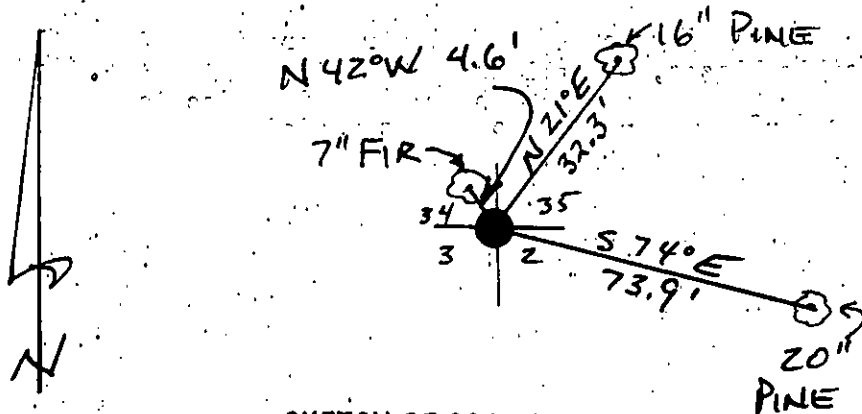
From which the original bearing trees

A stump hole, bears N 37½° E 22 lks dist with fallen log  
 mkd T27N R30W S35 BT (record)  
 A stump hole, Bears S ¼° E 50 lks dist with a fallen log  
 having no visible marks  
 A dead pine, 34 ins diam, bears N 42½° W 71 lks dist, mkd  
 T27N R30W S34 BT (record)

The new bearing trees:

A pine, 12 ins diam, bears N 21½° E 49 lks dist, mkd  
 T27N R30W S35 BT  
 A pine, 17 ins diam, bears S 74° E 112 lks dist mkd  
 T 26 N R30 W S2 BT  
 A fir, 5 ins diam, bears N 42° W 7 lks dist, mkd T27N  
 R30W S 34 BT

Bury the original stone alongside the post  
 (over)



SKETCH OF CORNER

## CERTIFICATION

I, RICHARD GOACHER  
 certify the information shown herein is true and correct.

Signature Ground Party Chief

I, Richard G. Goacher

certify that this Corner Record correctly represents work performed  
 by me or under my direction in compliance with the "Corner  
 Recordation Act" (M.C.A.)

Signature of Surveyor & Seal

Date: 7-88 Reg. No. 7318-S

Employer: Goacher and Assoc.

Office of Clerk and Recorder, County of Lincoln. This "corner  
 record" was filed for record on Aug 31, 1988  
 was noted on the cross-index plat and is assigned page No. 3899, in  
 book No. \_\_\_\_\_

County Official Janet St. Angel by Bill Basford

Sec. 2


• corner this sheet

Cross Index No. \_\_\_\_\_ T. \_\_\_\_\_ R. \_\_\_\_\_ P.M.M.

Adopted July 1, 1981, Montana Board of Professional Engineers & Land Surveyors

**INSTRUCTIONS TO SURVEYORS FOR COMPLETION OF  
CERTIFIED CORNER RECORDATION FORMS**

**I. ORIGINAL AND/OR SUBSEQUENT RECORD:**

This item should describe or quote those portions of the original or subsequent record which were used in evaluating the corner position. The original record will usually be the General Land Office field notes. Subsequent record can come from several sources: Previously filed corner records, maps and plats, private and public records, etc. Some of the subsequent record, even though not in the public record, but known to have validity by the surveyor, may be quoted and appropriately noted.

The record data helps support the reestablished corner position because it clearly shows what history the surveyor based his corner position on. In some cases, however, the record may be unknown or not pertinent. A statement to that effect should appear on the corner record.

**II. DESCRIPTION OF EVIDENCE FOUND OR METHOD OF LOCATING CORNER POSITION:**

This item will describe the original or subsequent record evidence found. If portions of the found evidence cannot be reconciled with the record, then the disregarded record should be noted, and, if possible, an opinion as to its cause narrated.

If no physical evidence of the original or subsequent monuments and accessories can be found, then the method used to reestablish the lost or obliterated corner (single proportion, fence intersection, parcel evidence, terrain calls, centerline of road, etc.) shall be indicated.

**III. DESCRIPTION OF MONUMENTS AND ACCESSORIES SET TO PERPETUATE THE CORNER POSITION:**

This item should list all details about the corner and its location which will help exclusively identify the corner position; including size and type of monument, how marked if not shown in sketch, and distinguishing topographic calls which help locate the corner. In many cases, instructions on how to find the corner should be included.

References or ties to other corners are optional and may be drawn on the face or back of the corner record form, or references to Certificate of Survey may be made. Separate drawings may be attached to the corner form.

If state plane coordinate values for the corner position are shown, then the control upon which they are based should be indicated.

**IV. SKETCH OF CORNER:**

This item will usually show how a found or set corner is marked and may also show topography or accessory monuments found or set and their relation to the corner. There is no stipulated format; the sketch could be transcribed field note entries.

**V. CERTIFICATION:**

The name and signature of the ground party chief is optional.

The Surveyor who performed or directed the field work which is depicted on the "Certified Corner Record" shall sign and affix his seal in the Certification.

The employer blank is optional but useful in tracking down original field note data or adjacent record if, in the future, questions arise about the corner.

**VI.**

The Cross Index at the bottom of the page should be completed by the Surveyor. Only the single Township Index where the corner is filed shall be completed.

The lower righthand corner is a corner location diagram and should have the pertinent section filled in at the top and a closed circle indicating the appropriate corner position in the section filled in. This is intended to be an aid in searching the "Record" once it has been filed.

**3. Found:** BLM monument with a brass cap marked as described in the BLM record, from which the following references were found;

A fir 7 ins diam bears N 42° W 4.6 ft dist, no visible scribing within blaze

A pine 20 ins diam bears S 74° E 73.9 ft dist, no visible scribing within blaze

A pine, 16 ins diam, bears N 21° E 32.3 ft dist, no visible scribing within blaze

Southwest quadrant (Sec 3) contains no available trees for creating a fourth accessory to the monument

Since all three BT's from the 1968 remonumentation work were in good condition, I painted visible blazes, as well as a 6" band in red paint. Set a steel guard post w/ Survey marker and Property Boundary decals attached. Attached signs 54-3 and 54-9 to each BT as needed