

## INSTRUCTIONS

1. Original and/or subsequent record used to evaluate the corner position.
2. Description of evidence found, note discrepancies in the record, state method of establishing lost or obliterated corners.
3. Description of monument and accessories set to perpetuate the corner position.
4. Sketch of corner, show all pertinent data which can best be shown in a sketch example, corner marking, topography ties, position of accessories, etc.
5. Certification must be signed and sealed by Land Surveyor registered in the State of Montana.
6. Fill in Cross Index & Section Diagram at bottom of sheet.

## CERTIFIED CORNER RECORDATION

Corner 35 & 36 of Secs. 1 & 2 T. 27 N. R. 30 W. P.M.M. Lincoln County

- I. 1900, original, G.L.O., record by B. Adams: "Set a tamarack post, 3 ft. long, 8 ins. square, 24 ins. in the ground for cor. of secs. 1, 2, 3, and 36, marked T27N S36 on NE, R30W S1 on SE, T26N S2 on SW and S35 on the NW faces with 1 notch on E and 5 notches on W edges, from which

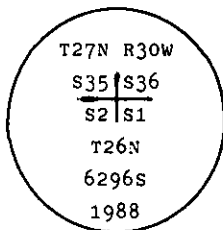
A fir, 12 ins. diam., bears N16°30'E, 36 lks. dist., mkd. T27N R30W S36 BT.

A willow, 6 ins. diam., bears S22°30'E, 17 lks. dist., mkd. T26N R30W S1 BT.

Raise a mound of stone 2 ft. base, 1 1/2 ft. high, w. of cor."

- II. No evidence of corner or its accessories found. Corner location is adjacent to a road and the area has been disturbed.

- III. At single proportioned distance (N89°44'50"E, 2641.22 Ft.) from the 1/4 cor. of secs. 2 & 35, and (S89°44'50"W, 2641.22 Ft.) from the 1/4 cor. of secs. 1 & 36, set a 2 1/2 ins. diam., 30 ins. long, aluminum pipe, 30 ins. in the ground with 3 1/4 ins. diam., U.S.D.A. Forest Service, aluminum cap, marked:



from which:

A ponderosa pine, 8 ins. diam., bears N53°E, 70.7 ft. dist., scribed T27N R30W S36 BT.

An engelmann spruce, 11 ins. diam., bears S24°E, 87.5 ft. dist., scribed T26N R30W S1 BT.

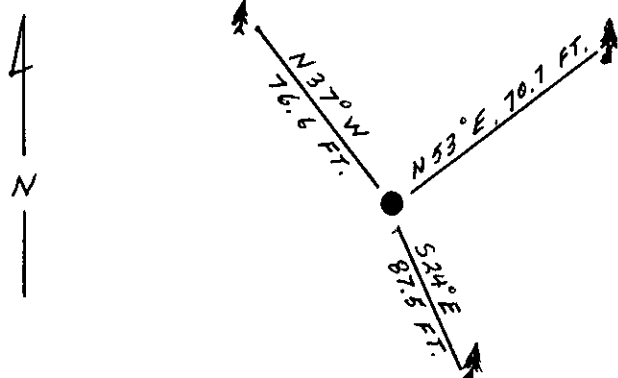
A western larch, 6 ins. diam., bears N37°W, 76.6 ft. dist., scribed T27N R30W S35 BT.

No trees available in the SW quadrant.

Build a 4 ft. diam. stone supporting collar mound aluminum monument.

Set galvanized steel post with "Survey Marker" decal, bears West, 2.7 ft. dist.

Sprayed red paint on scribe blazes and 6 in. bands and posted "Bearing Tree" and "Survey Monument" signs on all new bearing trees.



SKETCH OF CORNER

## CERTIFICATION

I, Gary A. Smith, certify the information herein is true and correct.

Linda S. Smith  
Signature Ground Party Chief

I, Linda S. Smith, certify that this corner record correctly represents work performed by me or under my supervision in compliance with the "Corner Recordation Act" (70-22-101, et seq., M.C.A.)

Linda S. Smith  
Signature of Surveyor Seal

Date: 6/1/88 Reg. No. 6296-S

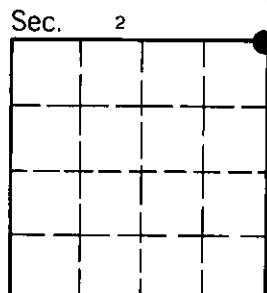
Employer: U.S. FOREST SERVICE

Office of Clerk and Recorder, County of Lincoln. This "corner record" was filed for record on July 20, 1988

was noted on the cross-index plat and is assigned page No. 3855, in

book No. \_\_\_\_\_

Janet B. Smith by Bill Smith  
County Official



Cross Index No. A-21 T. 26NR. 30W PMM

• - corner this sheet

# INSTRUCTIONS TO SURVEYORS FOR COMPLETION OF CERTIFIED CORNER RECORDATION FORMS

## I. ORIGINAL AND/OR SUBSEQUENT RECORD:

This item should describe or quote those portions of the original or subsequent record which were used in evaluating the corner position. The original record will usually be the General Land Office field notes. Subsequent record can come from several sources: Previously filed corner records, maps and plats, private and public records, etc. Some of the subsequent record, even though not in the public record, but known to have validity by the surveyor, may be quoted and appropriately noted.

The record data helps support the reestablished corner position because it clearly shows what history the surveyor based his corner position on. In some cases, however, the record may be unknown or not pertinent. A statement to that effect should appear on the corner record.

## II. DESCRIPTION OF EVIDENCE FOUND OR METHOD OF LOCATING CORNER POSITION:

This item will describe the original or subsequent record evidence found. If portions of the found evidence cannot be reconciled with the record, then the disregarded record should be noted, and, if possible, an opinion as to its cause narrated.

If no physical evidence of the original or subsequent monuments and accessories can be found, then the method used to reestablish the lost or obliterated corner (single proportion, fence intersection, parcel evidence, terrain calls, centerline of road, etc.) shall be indicated.

## III. DESCRIPTION OF MONUMENTS AND ACCESSORIES SET TO PERPETUATE THE CORNER POSITION:

This item should list all details about the corner and its location which will help exclusively identify the corner position; including size and type of monument, how marked if not shown in sketch, and distinguishing topographic calls which help locate the corner. In many cases, instructions on how to find the corner should be included.

References or ties to other corners are optional and may be drawn on the face or back of the corner record form, or references to Certificate of Survey may be made. Separate drawings may be attached to the corner form.

If state plane coordinate values for the corner position are shown, then the control upon which they are based should be indicated.

## IV. SKETCH OF CORNER:

This item will usually show how a found or set corner is marked and may also show topography or accessory monuments found or set and their relation to the corner. There is no stipulated format; the sketch could be transcribed field note entries.

## V. CERTIFICATION:

The name and signature of the ground party chief is optional.

The Surveyor who performed or directed the field work which is depicted on the "Certified Corner Record" shall sign and affix his seal in the Certification.

The employer blank is optional but useful in tracking down original field note data or adjacent record if, in the future, questions arise about the corner.

## VI.

The Cross Index at the bottom of the page should be completed by the Surveyor. Only the single Township Index where the corner is filed shall be completed.

The lower righthand corner is a corner location diagram and should have the pertinent section filled in at the top and a closed circle indicating the appropriate corner position in the section filled in. This is intended to be an aid in searching the "Record" once it has been filed.