

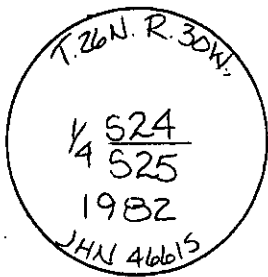
INSTRUCTIONS

1. Original and/or subsequent record used to evaluate the corner position.
2. Description of evidence found, note discrepancies in the record, state method of establishing lost or obliterated corners.
3. Description of monument and accessories set to perpetuate the corner position.
4. Sketch of corner, show all pertinent data which can best be shown in a sketch example, corner marking, topography ties, position of accessories, etc.
5. Certification must be signed and sealed by Registered Land Surveyor in State of Montana.
6. Fill in Cross Index & Section Diagram at bottom of sheet.

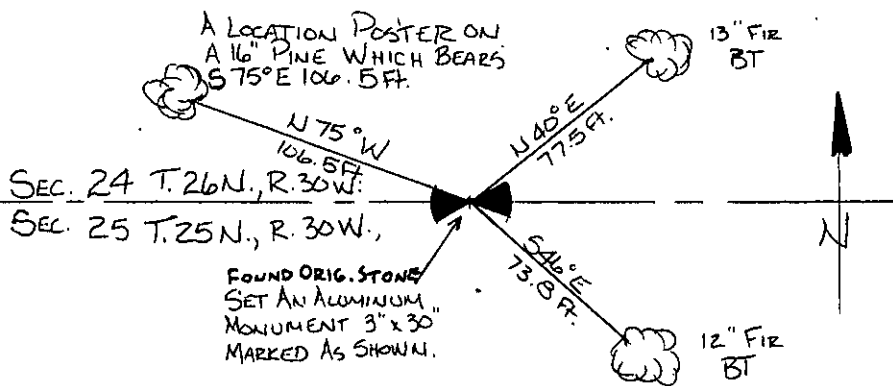
CERTIFIED CORNER RECORDATION

Corner S $\frac{1}{4}$ Corner Sec. 24 T. 26N R. 30W P.M.M. Lincoln County

1. 39.81 chains: Set a shale stone 16 X 8 X 8 inch 11 inches in the ground, for $\frac{1}{4}$ Sec. cor. marked $\frac{1}{4}$ on N. face, and raise a mound of stone 2 foot base 1 $\frac{1}{2}$ ft. high, N. of corner.
2. Found original stone marked as per G.L.O. records. Buried original stone alongside aluminum monument.
3. Set: a 3" X 30" aluminum capped monument, marked as shown below, from which,
A 13" Fir bears N 40°E 77.5 feet scribed $\frac{1}{4}$ S24B.T. and posted.
A 12" Fir bears S46°E 73.8 feet scribed $\frac{1}{4}$ S25B.T. and posted.
A location poster on a 16" "P" Pine bears N 75°W 106.5 feet.
Painted monument and accessories with bright red paint.



Set 3" aluminum monument marked as shown.



SKETCH OF CORNER

CERTIFICATION

I, Walter Gibbons

certify the information shown herein is true and correct.

Walter Gibbons
Signature Ground Party Chief

I, Jack H. Ninneman

certify that this Corner Record correctly represents work performed by me or under my direction in compliance with the "Corner Recordation Act" (70-22-101, et seq., M.D.A.)

Jack H. Ninneman
Signature of Surveyor & Seal

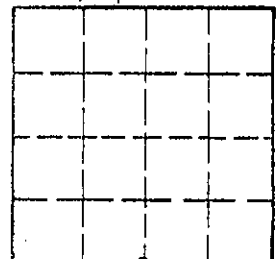
Date: July 82 Reg. No. 4661S

Employer: Ninneman Engineering Inc.

Office of Clerk and Recorder, County of Lincoln. This "corner record" was filed for record on the Oct. 20 day of 1982 was noted on the cross-index plat and is assigned page No. 1969, in book No. _____

Eleanor L. Vaughn by Betty L. Conces
County Official Deputy

Sec. 24



Cross Index No. _____ T. 26N R. 30W P.M.M.

• corner this sheet