

INSTRUCTIONS

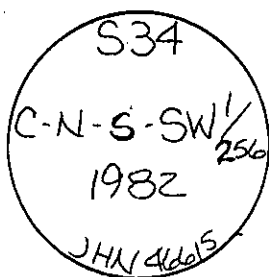
1. Original and/or subsequent record used to evaluate the corner position.
2. Description of evidence found, note discrepancies in the record, state method of establishing lost or obliterated corners.
3. Description of monument and accessories set to perpetuate the corner position.
4. Sketch or corner, show all pertinent data which can best be shown in a sketch example, corner marking, topography (ties, position of accessories, etc.
5. Certification must be signed and sealed by Registered Land Surveyor in State of Montana.
6. Fill in Cross Index & Section Diagram at bottom of sheet.

CERTIFIED CORNER RECORDATION

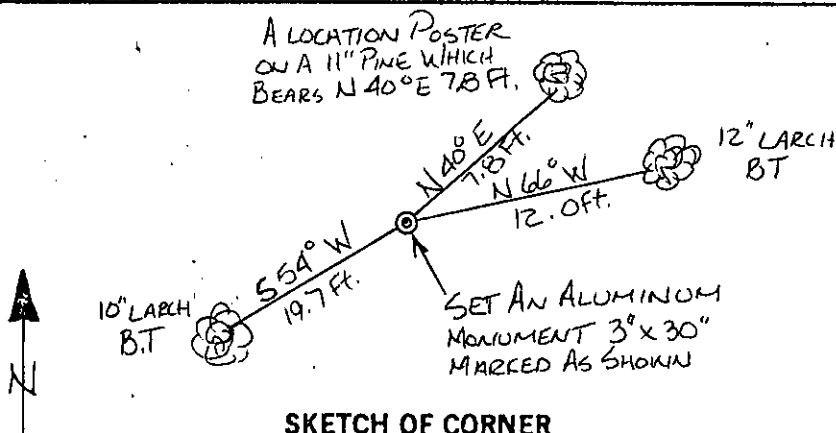
Corner C-N-S-SW 1/256 Corner Sec. 34 T. 26N R. 30W P.M.M. Lincoln County

1. This corner not previously set.

2. Set: a 3" X 30" aluminum capped monument marked as shown below from which,
 A 10" Larch bears S 54°W 19.7 feet scribed S34 C-N-S-SW 1/256 B.T. and posted.
 A 12" Larch bears N 66°W 12.0 feet scribed S34 C-N-S-SW 1/256 B.T. and posted.
 A location poster on an 11" Pine bears N 40°E 7.8 feet.
 Painted monument and accessories with bright red paint.



Set 3" aluminum monument marked as shown.



SKETCH OF CORNER

CERTIFICATION

1. Dave Stanley

certify the information shown herein is true and correct.

Dave Stanley
Signature of Ground Party Chief

1. Jack H. Ninneman

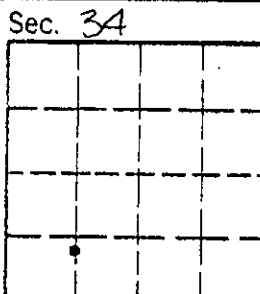
certify that this Corner Record correctly represents work performed by me or under my direction in compliance with the "Corner Recordation Act" (70-22-101, et seq., M.D.A.)

Jack H. Ninneman
Signature of Surveyor & Seal

Date: Aug. '82 Reg. No. 4661S

Employer: Ninneman Engineering Inc.

Office of Clerk and Recorder, County of Lincoln. This "corner record" was filed for record on the Sept. 10 day of 1982 was noted on the cross-index plat and is assigned page No. 1948, in book No. Eleanor L. Vaughn by Betty L. Conner
County Official deputy



Cross Index No. Y, Z-14 T. 26N R. 30W P.M.M.

• corner this sheet