

## INSTRUCTIONS

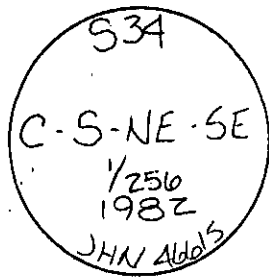
1. Original and/or subsequent record used to evaluate the corner position.
2. Description of evidence found, note discrepancies in the record, state method of establishing lost or obliterated corners.
3. Description of monument and accessories set to perpetuate the corner position.
4. Sketch of corner, show all pertinent data which can best be shown in a sketch example, corner marking, topography ties, position of accessories, etc.
5. Certification must be signed and sealed by Registered Land Surveyor in State of Montana.
6. Fill in Cross Index & Section Diagram at bottom of sheet.

## CERTIFIED CORNER RECORDATION

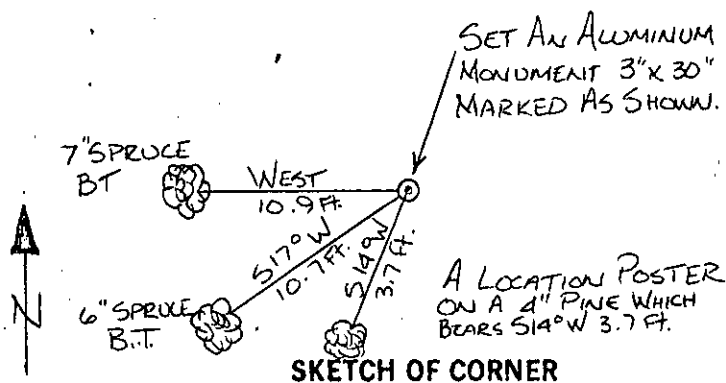
Corner C-S-NE-SE 1/256 Cor. Sec. 34 T. 26N R. 30W P.M.M. Lincoln County

1. This corner not previously set.

2. Set: a 3" X 30" aluminum capped monument marked as shown below from which,  
 A 7" Spruce bears West 10.9 feet scribed C-S-NE-SE 1/256 S34B.T. and posted.  
 A 6" Spruce bears S 17°W 10.7 feet scribed C-S-NE-SE 1/256 S34B.T. and posted.  
 A location poster on a 4" Pine bears S 14°W 3.7 feet.  
 Painted monument and accessories with bright red paint.



Set 3" aluminum monument marked as shown.



SKETCH OF CORNER

## CERTIFICATION

I, David Stanley

certify the information shown herein is true and correct.

David Stanley

Signature of Record Party Chief

I, Jack H. Ninneman

certify that this Corner Record correctly represents work performed by me or under my direction in compliance with the "Corner Recordation Act" (70-22-101, et seq., M.D.A.)

Jack H. Ninneman

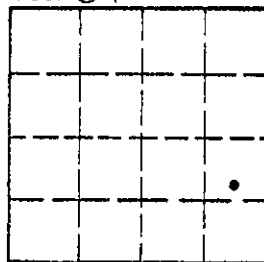
Signature of Surveyor & Seal

Date: June '82 Reg. No. 4661S

Employer: Ninneman Engineering Inc.

Office of Clerk and Recorder, County of Lincoln. This "corner record" was filed for record on the Sept. 10 day of 1982 was noted on the cross-index plat and is assigned page No. 1942, in book No. Eleanor L. Vaughn by Betty L. Conces County Official deputy

Sec. 34



Cross Index No. X24-16, 17 T. 26N R. 30W P.M.M.

• - corner this sheet