

INSTRUCTIONS

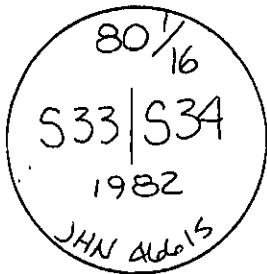
1. Original and/or subsequent record used to evaluate the corner position.
2. Description of evidence found, note discrepancies in the record, state method of establishing lost or obliterated corners.
3. Description of monument and accessories set to perpetuate the corner position.
4. Sketch of corner, show all pertinent data which can best be shown in a sketch example, corner marking, topography ties, position of accessories, etc.
5. Certification must be signed and sealed by Registered Land Surveyor in State of Montana.
6. Fill In Cross Index & Section Diagram at bottom of sheet.

CERTIFIED CORNER RECORDATION

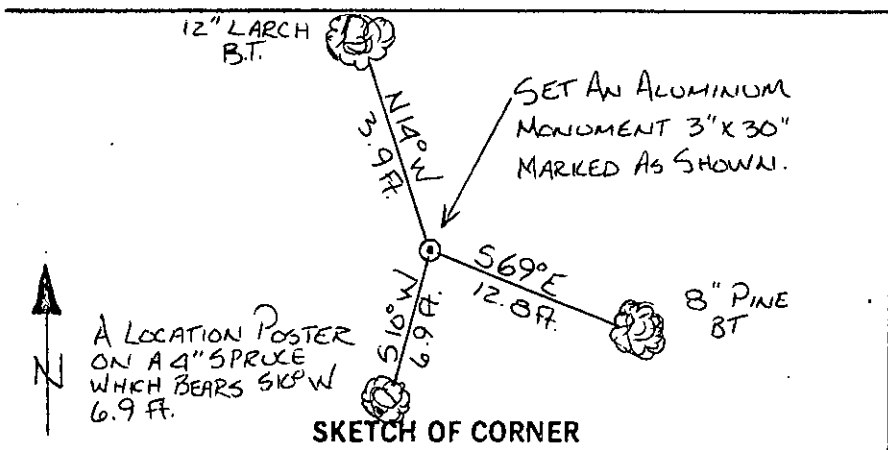
Corner 80 1/16 corner Sec. 34 T. 26N R. 30W P.M.M. Lincoln County

1. This corner not previously set.

2. Set: a 3" X 30" aluminum capped monument marked as shown below from which,
 A 12" Larch bears N 14° W 3.9 feet scribed S33 1/16 B.T. and posted.
 An 8" Pine bears S 69° E 12.8 feet scribed S34 1/16 B.T. and posted.
 A location poster on a 4" Spruce bears S 10° W 6.9 feet.
 Painted monument and accessories with bright red paint.



Set 3" aluminum monument marked as shown.



CERTIFICATION

I, David Stanley
 certify the information shown herein is true and correct.
David Stanley
 Signature of Bound Party Chief

I, Jack H. Minneman
 certify that this Corner Record correctly represents work performed
 by me or under my direction in compliance with the "Corner
 Recordation Act" (70-22-101, et seq., M.D.A.)
Jack H. Minneman
 Signature of Surveyor & Seal

Date June '82 Reg. No. 4661S
 Employer: Ninneman Engineering Inc.

Office of Clerk and Recorder, County of Lincoln, This "corner record" was filed for record on the Sept. 10 day of 1982 was noted on the cross-index plat and is assigned page No. 1941, in book No. _____, Eleanor L. Vaughn by Betty L. Conces County Official deputy

