

INSTRUCTIONS

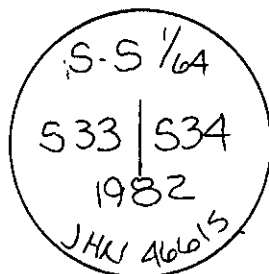
1. Original and/or subsequent record used to evaluate the corner position.
2. Description of evidence found, note discrepancies in the record, state method of establishing lost or obliterated corners.
3. Description of monument and accessories set to perpetuate the corner position.
4. Sketch of corner, show all pertinent data which can best be shown in a sketch example, corner marking, topography ties, position of accessories, etc.
5. Certification must be signed and sealed by Registered Land Surveyor in State of Montana.
6. Fill in Cross Index & Section Diagram at bottom of sheet.

CERTIFIED CORNER RECORDATION

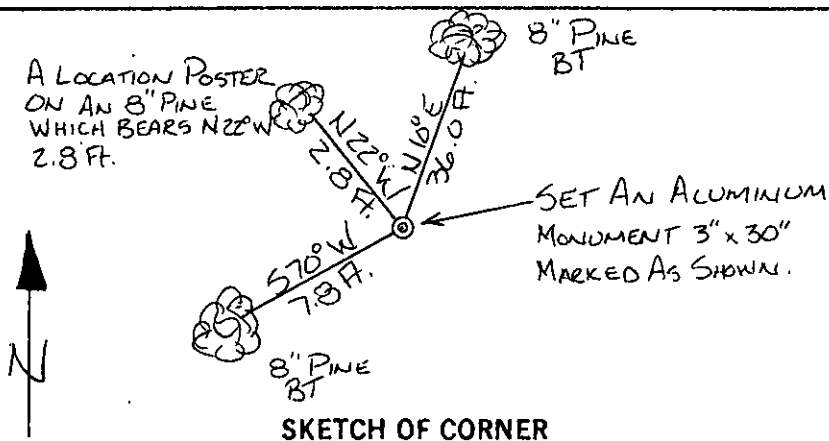
Corner S-S 1/64 Corner Sec. 34 T. 26N R. 30W P.M.M. Lincoln County

1. This corner not previously set.

2. Set: a 3" X 30" aluminum capped monument marked as shown from which,  
 An 8" Pine bears S 70°W 7.8 feet scribed S-S 1/64 S34 B.T. and posted.  
 An 8" Pine bears N 10°E 36.0 feet scribed S-S 1/64 B.T. and posted.  
 A location poster on an 8" Pine bears N 22°W 2.8 feet.  
 Painted monument and accessories with bright red paint.



Set 3" aluminum monument marked as shown.



CERTIFICATION

I, Walt Gibbons  
 certify the information shown herein is true and correct.  
*Walt Gibbons*  
 Signature Ground Party Chief

I, Jack H. Ninneman  
 certify that this Corner Record correctly represents work performed by me or under my direction in compliance with the "Corner Recordation Act" (70-22-101, et seq., M.D.A.)  
*Jack H. Ninneman*  
 Signature of Surveyor & Seal

Date: Aug. '82 Reg. No. 4661S  
 Employer: Ninneman Engineering Inc.

Office of Clerk and Recorder, County of Lincoln. This "corner record" was filed for record on the Sept. 10 day of 1982 was noted on the cross-index plat and is assigned page No. 1935, in book No. \_\_\_\_\_ Eleanor L. Vaughn by Betty B. Conner County Official deputy

Sec. 34
