

INSTRUCTIONS

1. Original and/or subsequent record used to evaluate the corner position.
2. Description of evidence found, note discrepancies in the record, state method of establishing lost or obliterated corners.
3. Description of monument and accessories set to perpetuate the corner position.
4. Sketch of corner, show all pertinent data which can best be shown in a sketch example, corner marking, topography ties, position of accessories, etc.
5. Certification must be signed and sealed by Registered Land Surveyor in State of Montana.
6. Fill in Cross Index & Section Diagram at bottom of sheet.

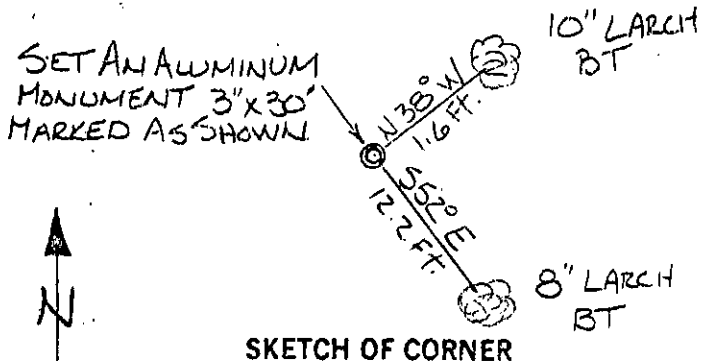
CERTIFIED CORNER RECORDATION

Corner C-N-N-N 1/256 corner Sec. 24 T. 26N R. 30W P.M.M. Lincoln County

1. This corner not previously set,
2. Set : A 3" X 30" aluminum capped monument marked as shown below, from which,
 A 10" Larch bears N 38°W 1.6 feet scribed C-N-N-N 1/256 B.T. and posted.
 An 8" Larch bears S 52°E 12.2 feet scribed C-N-N-N 1/256 B.T. and posted.

S24
 C-N-N-N 1/256
 1982
 JHN 4661S

Set 3" aluminum monument marked as shown.



CERTIFICATION

David Stanley
 certify the information shown herein is true and correct.
 Signature of Ground Party Chief

Jack H. Ninneman
 certify that this Corner Record correctly represents work performed by me or under my direction in compliance with the "Corner Recordation Act" (70-22-101, et seq., M.D.A.)
 Signature of Surveyor & Seal

Date: Aug 5, 82 Reg. No. 4661S
 Employer: Ninneman Engineering Inc.

Office of Clerk and Recorder, County of Lincoln. This "corner record" was filed for record on the Sept 10 day of 1982 was noted on the cross-index plat and is assigned page No. 1923, in book No. _____ Eleanor L. Vaughn by Betty L. Conces, deputy County Official

