

## INSTRUCTIONS

1. Original and/or subsequent record used to evaluate the corner position.
2. Description of evidence found, note discrepancies in the record, state method of establishing lost or obliterated corners.
3. Description of monument and accessories set to perpetuate the corner position.
4. Sketch of corner, show all pertinent data which can best be shown in a sketch example, corner marking, topography ties, position of accessories, etc.
5. Certification must be signed and sealed by Registered Land Surveyor in State of Montana.
6. Fill in Cross Index & Section Diagram at bottom of sheet.

## CERTIFIED CORNER RECORDATION

Corner Southeast Corner Sec. 24 T. 26N R. 30W P.M.M. Lincoln County

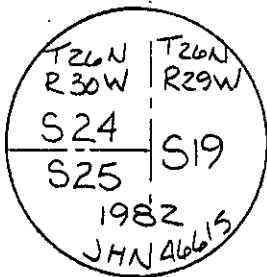
1. 80 chains: From 1916 re Survey notes, Set an iron post, 3 feet long, 3 inches in diameter, 24 inches in the ground for corner of Sections 24 and 25 only, with brass cap marked

T26N
S24
S25
R30W

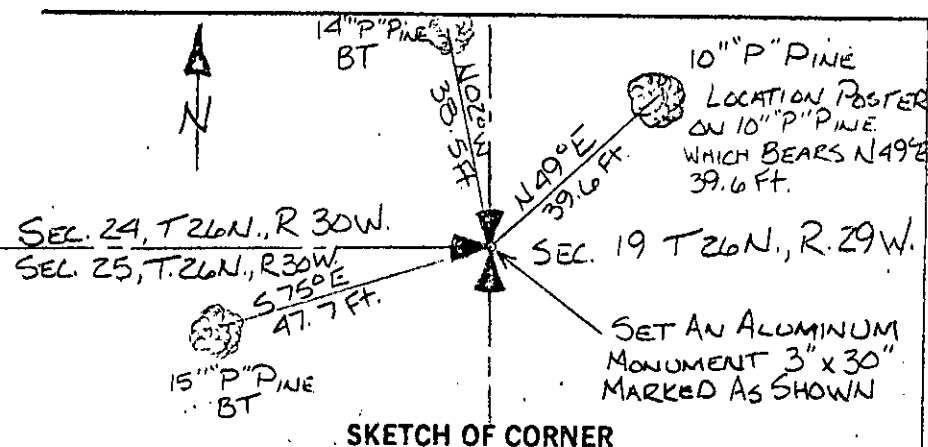
and raise a mound of stone, 2 foot base, 1½ feet high W. of corner.

2. After diligent search we discovered no evidence of the original corner.

3. Set: a 3" X 30" aluminum capped monument, marked as shown below, from which,  
 A 15" "P" Pine bears S 75°E 47.7 feet scribed S25 T26NR30W B.T. and posted.  
 A 14" "P" Pine bears N 2°W 38.5 feet scribed S24 T26N.,R.30W B.T. and posted.  
 A location poster on a 10" Pine bears N 49°E 39.6 feet.  
 Painted monument and accessories with bright red paint.



Set 3" aluminum monument marked as shown.



SKETCH OF CORNER

## CERTIFICATION

I, Walter Gibbons  
 certify the information shown herein is true and correct.

Walter Gibbons  
 Signature Ground Party Chief

I, Jack H. Ninneman  
 certify that this Corner Record correctly represents work performed by me or under my direction in compliance with the "Corner Recordation Act" (70-22-101, et seq., M.D.A.)

Jack H. Ninneman  
 Signature of Surveyor & Seal

Date: July '82 Reg. No. 4661S

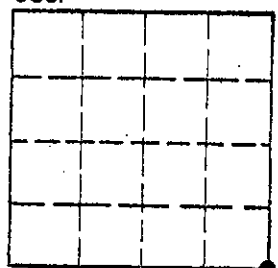
Employer: Ninneman Engineering Inc.

Office of Clerk and Recorder, County of Lincoln. This "corner record" was filed for record on the Sept. 10 day of 1982 was noted on the cross-index plat and is assigned page No. 1913, in book No. \_\_\_\_\_

Eleanor L. Vaughn by Betty L. Conces  
 County Official deputy

Cross Index No. R-25 T. 26N R. 30W P.M.M.

Sec. 24



• corner this sheet