

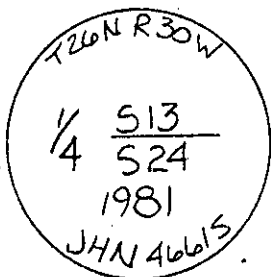
## INSTRUCTIONS

1. Original and/or subsequent record used to evaluate the corner position.
2. Description of evidence found, note discrepancies in the record, state method of establishing lost or obliterated corners.
3. Description of monument and accessories set to perpetuate the corner position.
4. Sketch or corner, show all pertinent data which can best be shown in a sketch example, corner marking, topography ties, position of accessories, etc.
5. Certification must be signed and sealed by Registered Land Surveyor in State of Montana.
6. Fill in Cross Index & Section Diagram at bottom of sheet.

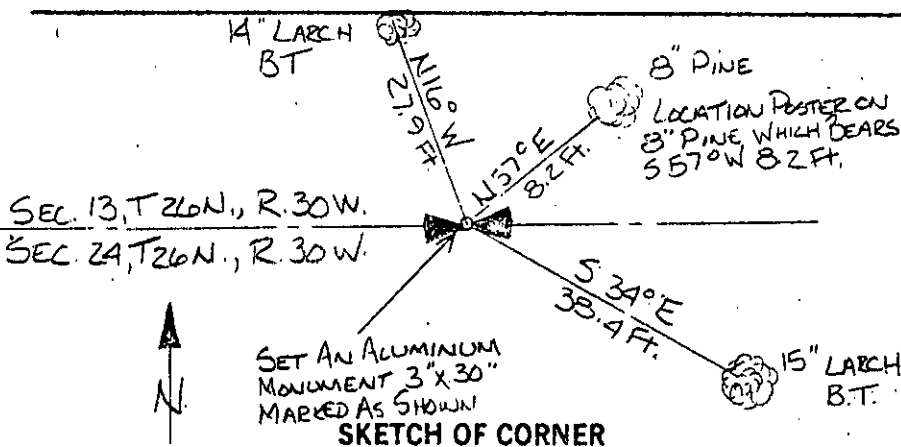
## CERTIFIED CORNER RECORDATION

Corner N $\frac{1}{4}$  Corner Sec. 24 T. 26N R. 30W P.M.M. Lincoln County

1. 40 chains: Set a shale stone, 14 X 10 X 6 inches, 9 inches in the ground for  $\frac{1}{4}$  Sec. Corner, marked  $\frac{1}{4}$  on N. face, from which a Tamarack 5 inches diameter, bears N.  $26^{\circ}$ W, 10 links distance marked  $\frac{1}{4}$  S 13 B.T.  
A Fir, 6 inches diameter, bears S  $16^{\circ}$ W., 11 links distance, marked  $\frac{1}{4}$  S 24 B.T.
2. After diligent search we discovered no evidence of the original corner.
3. Set: a 3" X 30" aluminum capped monument marked as shown below, from which,  
A 14" Larch bears N  $16^{\circ}$ W 27.9 feet accribed  $\frac{1}{4}$  S 13 B.T. and posted.  
A 15" Larch bears S  $34^{\circ}$ W 38.4 feet scribed  $\frac{1}{4}$  S 24 B.T. and posted.  
A location poster on an 8" Pine bears S  $57^{\circ}$ W 8.2 feet.  
Painted monument and accessories with bright red paint.



Set 3" aluminum monument marked as shown.



## CERTIFICATION

I, Walter Gibbons

certify the information shown herein is true and correct.

Walter Gibbons  
Signature Ground Party Chief

I, Jack H. Ninneman

certify that this Corner Record correctly represents work performed by me or under my direction in compliance with the "Corner Recordation Act" (70-22-101, et seq., M.D.A.)

Jack H. Ninneman  
Signature of Surveyor & Sec. 1

Date: July '82 Reg. No. 4661S

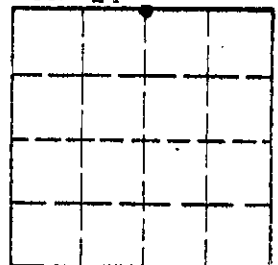
Employer: Ninneman Engineering Inc.

Office of Clerk and Recorder, County of Lincoln. This "corner record" was filed for record on the Sept. 10 day of 1982 was noted on the cross-index plat and is assigned page No. 1912, in book No. Eleanor Vaughn by Betty L. Conner

County Official deputy

Cross Index No. N-23 T. 26N R. 30W P.M.M.

Sec. 24



• corner this sheet