

INSTRUCTIONS

1. Original and/or subsequent record used to evaluate the corner position.
2. Description of evidence found, note discrepancies in the record, state method of establishing lost or obliterated corners.
3. Description of monument and accessories set to perpetuate the corner position.
4. Sketch of corner, show all pertinent data which can best be shown in a sketch example, corner marking, topography ties, position of accessories, etc.
5. Certification must be signed and sealed by Registered Land Surveyor in State of Montana.
6. Fill in Cross Index & Section Diagram at bottom of sheet.

CERTIFIED CORNER RECORDATION

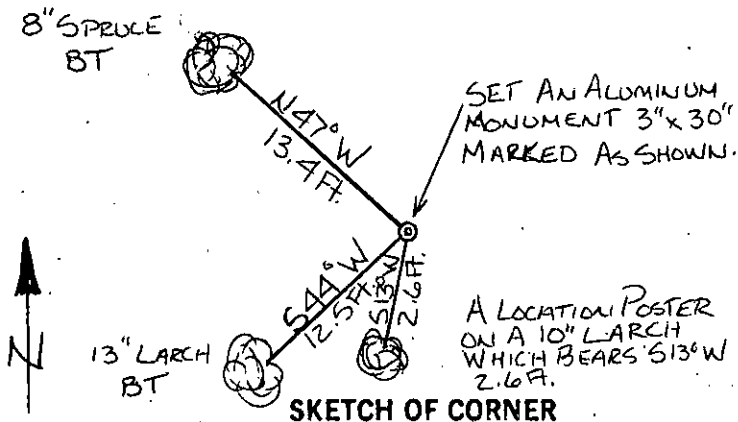
Corner C-W-NE 1/64 Corner Sec. 24 T. 26N R. 30W P.M.M. Lincoln County

1. This corner not previously set.

2. Set: a 3" X 30: aluminum capped monument marked as shown below from which,
 A 13" Larch bears S 44°W 12.5 feet scribed C-W-NE 1/64 B.T. and posted.
 An 8" Spruce bears N 47°W 13.4 feet scribed C-W-NE 1/64 B.T. and posted.
 A location poster on a 10" Larch bears S 13°W 2.6 feet.
 Painted monument and accessories with bright red paint.



Set 3" aluminum monument marked as shown.



CERTIFICATION

I, Jeff Paullin
 certify the information shown herein is true and correct.

Jeff Paullin
 Signature Ground Party Chief

I, Jack H. Ninneman
 certify that this Corner Record correctly represents work performed
 by me or under my direction in compliance with the "Corner
 Recordation Act" (70-22-101, et seq., M.D.A.)

Jack H. Ninneman
 Signature of Surveyor & Seal

Date: Aug. '82 Reg. No. 4661S

Employer: Ninneman Engineering Inc.

Office of Clerk and Recorder, County of Lincoln. This "corner
 record" was filed for record on the Sept. 10 day of 1982
 was noted on the cross-index plat and is assigned page No. 1909, in
 book No. _____

Eleanor L. Vaughn by Betty L. Conces
 County Official deputy

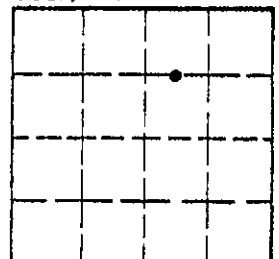
0-23,24

T. 26N

R. 30W

P.M.M.

Sec. 24



• corner this sheet