

INSTRUCTIONS

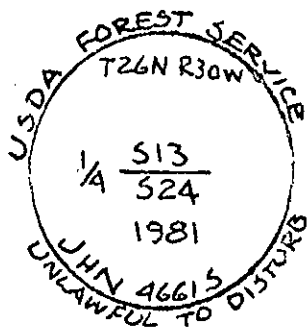
1. Original and/or subsequent record used to establish the corner position.
2. Description of evidence found, note discrepancies. In the record, state method of establishing lost or obliterated corners.
3. Description of monument and accessories set to perpetuate the corner position.
4. Sketch of corner, show all pertinent data which can best be shown in a sketch example, corner marking, topography etc., position of accessories, etc.
5. Certification must be signed and sealed by Registered Land Surveyor in State of Montana.
6. Fill in Cross Index & Section Diagram at bottom of sheet.

CERTIFIED CORNER RECORDATION

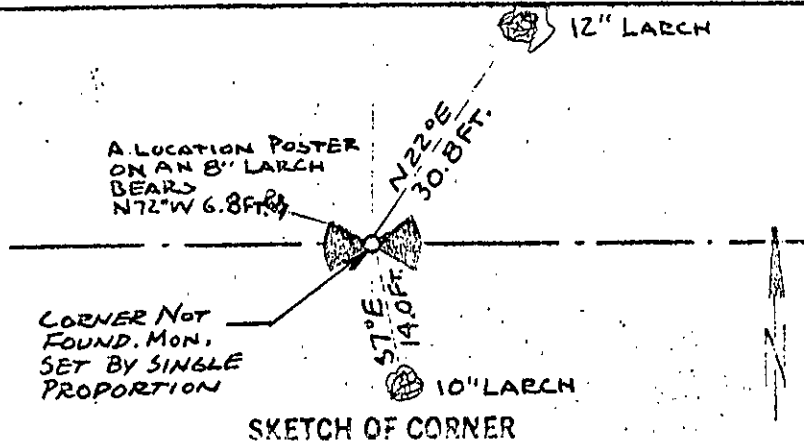
Corner North 1/4 Corner Section 24 T. 26N R. 30W P.M.M. Lincoln County

1. 40 chains: Set a shale stone 14 X 10 X 6 inches, 9 inches in the ground for 1/4 Section corner, marked 1/4 on N. face, from which a Tamarack 5 inches diameter, bears N26°W., 10 links distance, marked 1/4S13 B.T. A Fir, 6 inches diameter bears S16°W., 11 links distance, marked 1/4S24B.T.
2. After diligent search we discovered no evidence of the original corner.
3. Set: A 2 1/2" X 30" aluminum capped monument, marked as shown below, from which a 12" Larch bears N22°E 30.8 feet scribed 1/4S13B.T. and posted. A 10" Larch bears S7°E 14.0 feet scribed 1/4S24B.T. and posted. A location poster on an 8" Larch bears N72°W 6.8 feet painted monument and accessories with bright red paint.

VOID
RESET



Set aluminum capped monument marked as shown.



SKETCH OF CORNER

CERTIFICATION

I, David Stanley
certify the information shown herein is true and correct.
David Stanley
Signature Ground Party Chief

I, Jack H. Ninneman
certify that this Corner Record correctly represents work performed by me or under my direction in compliance with the "Corner Recordation Act" (70-22-101, et seq., M.D.A.)
Jack H. Ninneman
Signature of Surveyor & Seal

Date: 12/14/81 Reg. No. 46615
Employer: Ninneman Engineering Inc.

Office of Clerk and Recorder, County of Lincoln. This "corner record" was filed for record on the Sept. 10 day of 1982 was noted on the cross-index plat and is assigned page No. 1900, in Book No. _____ Eleanor L. Vaughn by Betty L. Concus County Official deputy N-23 26N 30W

