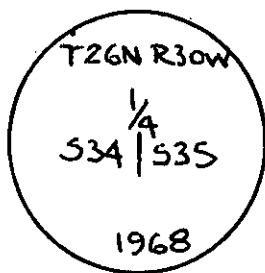


- INSTRUCTIONS
1. Original and/or subse record used to evaluate the corner position.
 2. Description of evidence found, note discrepancies in the record, state method of establishing lost or obliterated corners.
 3. Description of monument and accessories set to perpetuate the corner position.
 4. Sketch or corner, show all pertinent data which can best be shown in a sketch example, corner marking, topography ties, position of accessories, etc.
 5. Certification must be signed and sealed by Registered Land Surveyor in State of Montana.
 6. Fill in Cross Index & Section Diagram at bottom of sheet.

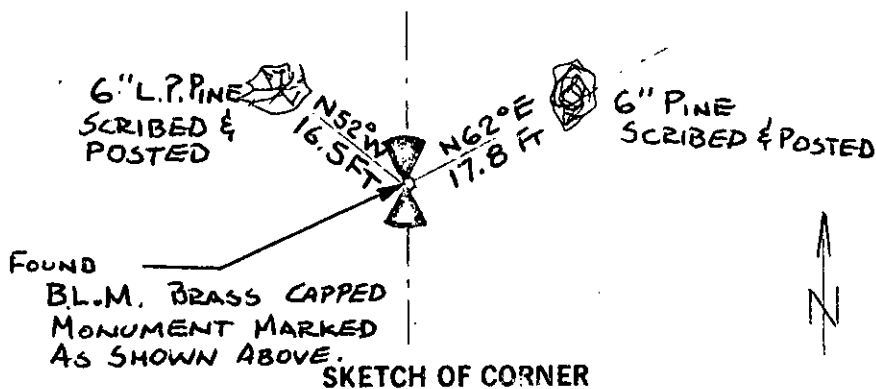
CERTIFIED CORNER RECORDATION

Corner East 1/4 ~~Corner~~ Section 34 T. 26N R. 30W P.M.M. Lincoln County

1. 72.98 chains: Set a Limestone 15 X 8 X 6 inch, 10 inches in the ground, for 1/4 Section corner, marked 1/4 on West face; from which a Tamarack 20 inches diameter bears N43 1/2° E 373 links distance marked 1/4 S 35 B.T. A Tamarack 24 inches diameter bears N75° W 183 links distance marked 1/4 S 34 B.T.
2. Found: BLM brass capped monument (marked as shown below) from which a 6" Pine bears N62° E 17.8 feet marked 1/4 S 35 B.T. & posted. A 6" Pine bears N52° W 16.5 feet scribed 1/4 S 34 B.T. and posted.
3. Painted monument and accessories with bright red paint.



Found BLM brass capped monument marked as shown..



CERTIFICATION

I, _____
certify the information shown herein is true and correct.

Signature: Ground Party Chief

Jack H. Ninneman

I certify that this Corner Record correctly represents work performed by me or under my direction in compliance with the "Corner Recordation Act" (70-22-131, et seq., M.D.A.)

Jack H. Ninneman
Signature of Surveyor & Seal

Date: 9/16/81 Reg. No. 4661S

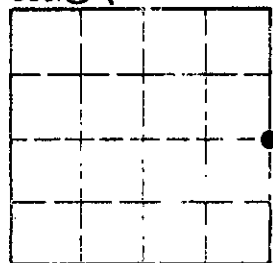
Employer: Ninneman Engineering Inc.

Sec. 34

Office of Clerk and Recorder, County of Lincoln. This "corner record" was filed for record on the December 7th day of 1981, was noted on the cross-index plat and is assigned page No. 1423, in book No. 1

Eleanor L. Vaughn Betty L. Conces
County Official Deputy

Cross Index No. X-17 T. 26N R. 30W P.M.M.



• - corner this sheet