

CERTIFIED LAND CORNER RECORDATION

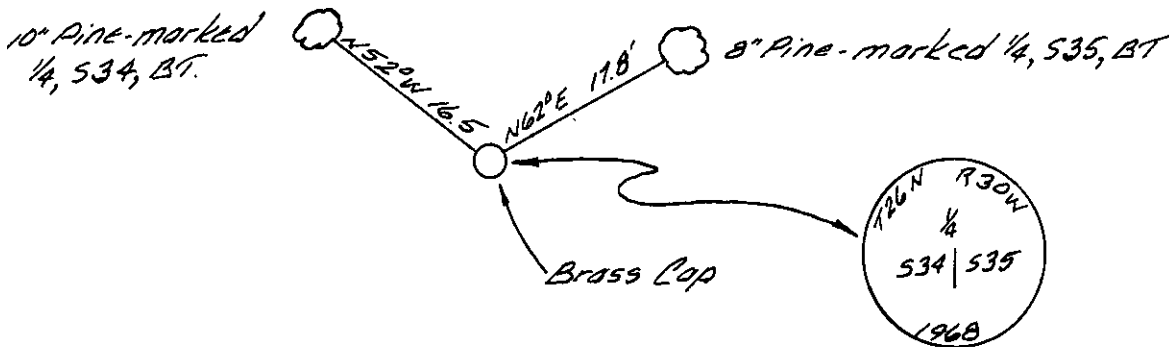
DESCRIPTION OF CORNER EVIDENCE FOUND, AND ORIGINAL RECORD (IF KNOWN)

RECORD: Set a limestone 15x8x6, 11 inches in the ground. Marked $\frac{1}{4}$ on west face from which:
 A tamarack 20" in diameter bears N43 $\frac{1}{2}$ °E., 373 links distance, marked $\frac{1}{4}$ S 35, BT.
 A tamarack 24" in diameter bears N75°W., 183 links distance, marked $\frac{1}{4}$ S 34, BT.

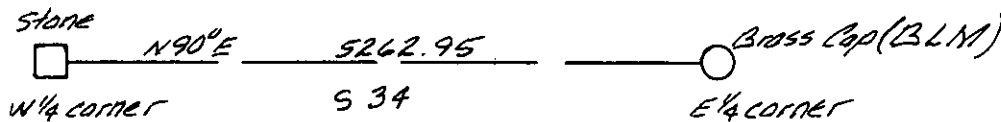
FOUND: BLM brass cap, and two new reference monuments.

DESCRIPTION OF MONUMENT AND ACCESSORIES ESTABLISHED TO PERPETUATE THE ORIGINAL LOCATION OF THIS CORNER:

Date of work: 6/25/81.



SKETCH, WITH COURSE AND DISTANCE TO ADJACENT CORNERS IF DETERMINED IN THIS SURVEY. (MAY SKETCH OR PASTE REPRODUCTION ON REVERSE SIDE.)



Surveyor's Seal

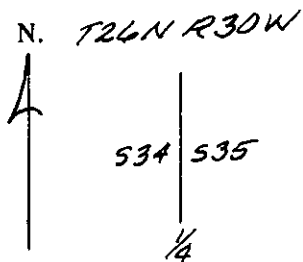
I, Sherman Marquardt
 certify that the information shown herein is true and correct.

Sherman P. Marquardt
 Signature of Ground Party Chief

I, Dean K. Marquardt
 certify that I have carefully performed or reviewed the work done on the diagrammed corner as reported on this recordation form and approve the same.

Dean K. Marquardt 2089-155
 Signature of Surveyor

DIAGRAM OF CORNER:



= Corner recorded on the sheet

Registration Number

Office of Clerk and Recorder, County of Lincoln

This "corner record" was filed for record on the 29th day of June 19 81, was noted on the cross-index plat and is assigned page No. 1038, in book No. _____.

Charles L. Vaughn by Sherman L. Hawks
 County Official Deputy