

CERTIFIED LAND CORNER RECORDATION

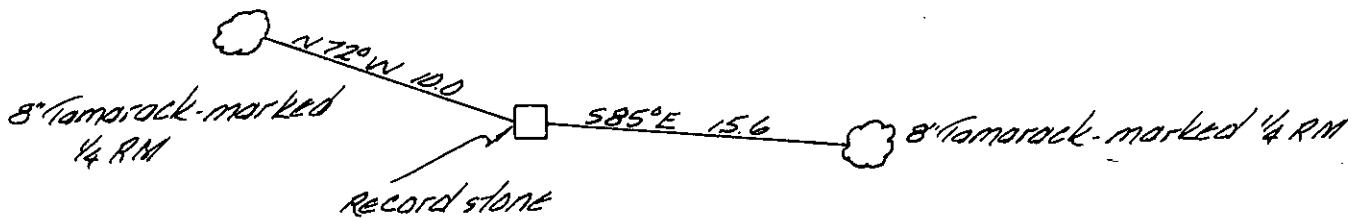
DESCRIPTION OF CORNER EVIDENCE FOUND, AND ORIGINAL RECORD (IF KNOWN)

RECORD: Set a limestone 16x12x15, 11 inches in the ground.
 Marked $\frac{1}{4}$ on west face and raised a mound of stone west of corner. Corner falls on spur sloping southeast.

FOUND: Record stone in place and scattered remains of record mound.

DESCRIPTION OF MONUMENT AND ACCESSORIES ESTABLISHED
 TO PERPETUATE THE ORIGINAL LOCATION OF THIS CORNER:

Date of work: 6/25/81.



SKETCH, WITH COURSE AND DISTANCE TO ADJACENT CORNERS IF DETERMINED IN THIS SURVEY.
 (MAY SKETCH OR PASTE REPRODUCTION ON REVERSE SIDE.)

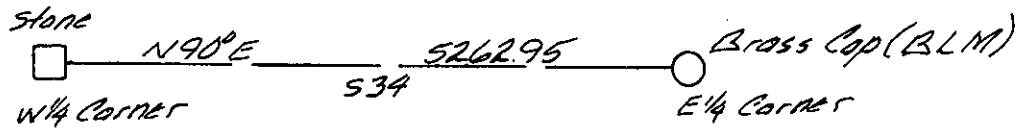


DIAGRAM OF CORNER:

Surveyor's Seal

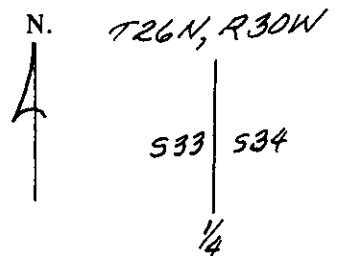
I, Sherman Marquardt
 certify that the information shown herein is true and correct.

Sherman P. Marquardt
 Signature of Ground Party Chief

I, Dean K. Marquardt
 certify that I have carefully performed or reviewed the work
 done on the diagrammed corner as reported on this recordation
 form and approve the same.

Dean K. Marquardt
 Signature of Surveyor

2989-ES
 Registration Number



= Corner recorded on the sheet

Office of Clerk and Recorder, County of Lincoln

This "corner record" was filed for record on the 29th day of June 19 81, was noted on the cross-index plat and is
 assigned page No. 1037, in book No. _____.

Eleanor L. Vaughn by Sherry L. Hawks
 County Official Deputy