

INSTRUCTIONS

1. Original and/or subsequent record used to evaluate the corner position.
2. Description of evidence found, note discrepancies in the record, state method of establishing lost or obliterated corners.
3. Description of monument and accessories set to perpetuate the corner position.
4. Sketch of corner, show all pertinent data which can best be shown in a sketch example, corner marking, topography ties, position of accessories, etc.
5. Certification must be signed and sealed by Land Surveyor registered in the State of Montana.
6. Fill in Cross Index & Section Diagram at bottom of sheet.

CERTIFIED CORNER RECORDATION

Corner S 1/4 Cor. of Sec. 19 T. 26 N. R. 29 W. P.M.M. Lincoln County

- I. 1903 original G.L.O. record by C. H. Albee: "Set a limestone, 12x10x5 ins., 8 ins. in the ground, for 1/4 sec. cor., marked 1/4 on N. face; from which:

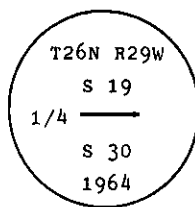
A fir, 18 ins. diam., bears N 62° E, 46 lks. dist., marked 1/4 S19 BT.

A tamarack, 26 ins. diam., bears S 8° E, 8 lks. dist., marked 1/4 S30 BT.

1964 B.L.M. remonumentation by R. L. Larimer and H. W. Grusing: The 1/4 sec. cor. of secs. 19 and 30, monumented with a limestone, 12x10x5 ins., firmly set and mkd. 1/4 on the N. face, and witnessed by the remains of one the original bearing trees.

At the corner point

Set an iron post, 30 ins. long, 2 1/2 ins. diam., 27 ins. in the ground, with brass cap mkd.



from which

The remains of the original bearing tree:

A stump, bears S 8° W, 8 lks. dist., remains of tree lying on the ground, mkd. 1/4 S30 BT.
(Record: S 8° E., 8 lks.)

The new bearing trees:

A pine, 6 ins. diam., bears S 6° W, 20 lks. dist., mkd. 1/4 S 30 BT.

A pine, 5 ins. diam., bears N 61° W, 5 lks. dist., mkd. 1/4 S 19 BT.

Bury the original stone alongside of the iron post.

- II. Found a 2 1/2 in. diam. iron pipe, firmly set, 6 ins. above ground, with a 3 1/4 in diam. BLM brass cap mkd. as shown above, from which:

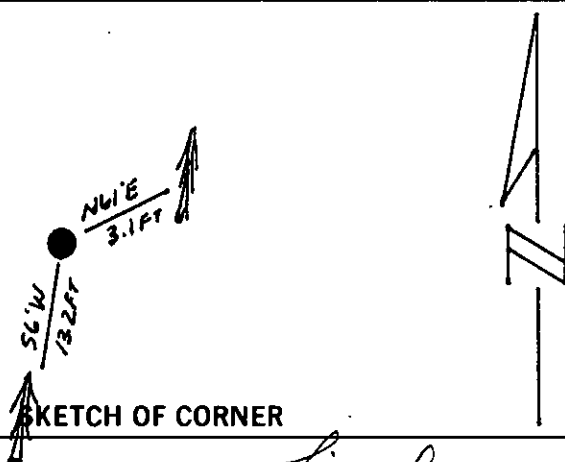
A larch, 12 ins. diam., bears S 6° W, 13.2 ft. (20 lks.) dist., healed face.

A pine, 12 ins. diam., bears N 61° E, 3.1 ft. (5 lks.) dist., mkd. 1/4 S 30 BT.

- III. Painted a red band around bearing trees and attached Land Survey Monument and Bearing Tree signs.

Set a 6 ft. galvanized steel guard post with Land Survey Marker and Property Boundary decals attached, East, 1.0 ft.

Magnetic Declination: 20° East.



SKETCH OF CORNER

CERTIFICATION

Kenneth R. Kern

I, Kenneth R. Kern certify the information shown herein is true and correct.

Signature Ground Party Chief

Alvah F. Hughes

I, Alvah F. Hughes certify that this Corner Record correctly represents work performed by me or under my direction in compliance with the "Corner Recordation Act" (70-22-101, et seq., M.C.A.)

Signature of Surveyor & Seal

Date: 12/16/93 Reg. No. 7322

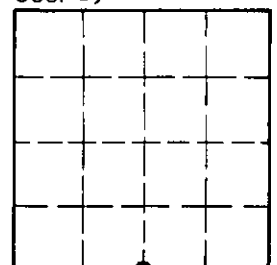
Employer: U.S. FOREST SERVICE

Office of Clerk and Recorder, County of Lincoln. This "corner record" was filed for record on March 24, 1994 was noted on the cross-index plat and is assigned page No. 6220, in book No. Coal M. Cumming B. B.

County Official

Cross Index No. R-3 T. 26 N R. 29 W PMM

Sec. 19



• - corner this sheet