

## INSTRUCTIONS

1. Original and/or subsequent record used to evaluate the corner position.
2. Description of evidence found, note discrepancies in the record, state method of establishing lost or obliterated corners.
3. Description of monument and accessories set to perpetuate the corner position.
4. Sketch of corner, show all pertinent data which can best be shown in a sketch example, corner marking, topography ties, position of accessories, etc.
5. Certification must be signed and sealed by Land Surveyor registered in the State of Montana.
6. Fill in Cross Index & Section Diagram at bottom of sheet.

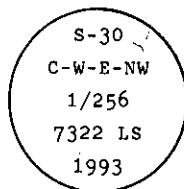
## CERTIFIED CORNER RECORDATION

Corner C-W-E-NW 1/256 S 30 T. 26 N. R. 29 W. P.M.M. Lincoln County

I. No previous record found at Lincoln County Courthouse.

II. No evidence found.

III. At the position determined by single proportion measurement, set a 3/4 in. diam. X 30 in. long driveable alum. rod, 24 ins. in the ground, in a collar of stone, with a 3 1/4 in. diam. alumm. cap mkd. as shown:



Establish two new bearing trees:

A spruce, 23 ins. dia., bears N 29° E, 53.9 ft. dist., mkd. C-W-E-NW 1/256 S30 BT.

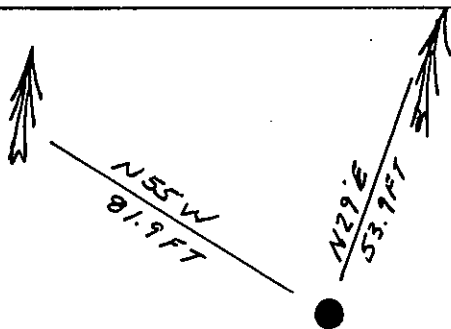
A fir, 7 ins. dia., bears N 55° W, 81.9 ft. dist., mkd. C-W-E-NW 1/256 S30 BT.

Painted a red band around each bearing tree and attached Land Survey Monument and Bearing Tree signs.

Set a 6 ft. galvanized steel guard post with Land Survey Marker and Property Boundary decals attached, North, 3 ft.

Magnetic Declination: East, 20°

Refer to the Certificate of Survey filed at the Lincoln County Courthouse.



SKETCH OF CORNER

## CERTIFICATION

Kenneth R. Kern

I, Kenneth R. Kern, certify the information shown herein is true and correct.

Signature Ground Party Chief

Alvah F. Hughes

I, Alvah F. Hughes, certify that this Corner Record correctly represents work performed by me or under my direction in compliance with the "Corner Recordation Act" (70-22-101, et seq., M.C.A.)

Signature of Surveyor 7322 LS

Date: 12/16/93 Reg. No. 7322 LS

Employer: U.S. FOREST SERVICE

Office of Clerk and Recorder, County of Lincoln. This "corner record" was filed for record on March 24, 1994 was noted on the cross-index plat and is assigned page No. 6217, in book No. Coral M. Cummings & Co. P.C.

County Official

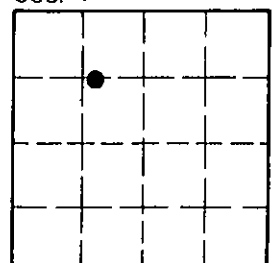
S-2.25

26 N

29 W

Cross Index No. \_\_\_\_\_ T. \_\_\_\_\_ R. \_\_\_\_\_ P.M.M.

Sec. 30



• - corner this sheet