

INSTRUCTIONS

1. Original and/or subsequent record used to evaluate the corner position.
2. Description of evidence found, note discrepancies in the record, state method of establishing lost or obliterated corners.
3. Description of monument and accessories set to perpetuate the corner position.
4. Sketch of corner, show all pertinent data which can best be shown in a sketch example, corner marking, topography ties, position of accessories, etc.
5. Certification must be signed and sealed by Land Surveyor registered in the State of Montana.
6. Fill in Cross Index & Section Diagram at bottom of sheet.

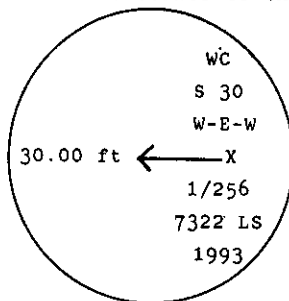
CERTIFIED CORNER RECORDATION

Corner WC W-E-W 1/256 S 30 T. 26 N. R. 29 W. P.M.M. Lincoln County

I. No previous record found at Lincoln County Courthouse.

II. No evidence found.

III. The position for the W-E-W 1/256 cor., determined by single proportion measurement, falls in the Silver Butte Fisher River, therefore I set a 3/4 in. diam. X 30 ins. long driveable alum. rod, 12 ins. in the ground, with a 3 1/4 in. diam. alum. cap mkd. as shown below, 30.0 ft EAST, on line between the N 1/4 Sec. 30 and the W-E-W 1/256 Sec. 30, as a witness corner to the W-E-W 1/256.



Build a collar of stone around the monument.

Establish two new bearing trees:

A cottonwood, 10 ins. dia., bears N 32° E, 39.1 ft. dist., mkd. WC W E W 1/256 S30 BT.

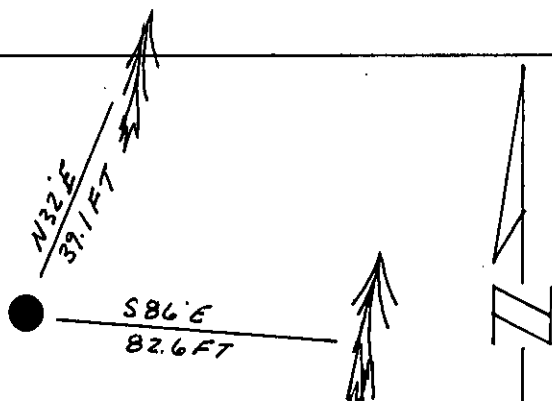
A larch, 15 ins. dia., bears S 86° E, 82.6 ft. dist., mkd. WC W E W 1/256 S30 BT.

Painted a red band around each bearing tree and attached Land Survey Monument and Bearing Tree signs.

Set a 6 ft. galvanized steel guard post with Land Survey Marker and Property Boundary decals attached, East, 3 ft. dist.

Magnetic Declination: East, 20°

Refer to the Certificate of Survey filed at the Lincoln County Courthouse.



SKETCH OF CORNER

CERTIFICATION

I, Kenneth R. Kern
certify the information shown herein is true and correct.

Kenneth R. Kern
Signature Ground Party Chief

I, Alvah F. Hughes

certify that this Corner Record correctly represents work performed by me or under my direction in compliance with the "Corner Recordation Act" (70-22-101, et seq., M.C.A.)

Alvah F. Hughes
Signature of Surveyor & Seal

Date: 12/16/93 Reg. No. 7322 LS

Employer: U.S. FOREST SERVICE

Office of Clerk and Recorder, County of Lincoln. This "corner record" was filed for record on 3-24-94

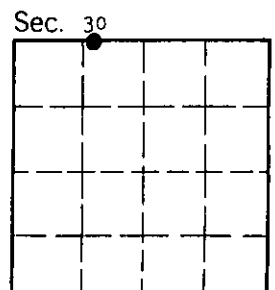
was noted on the cross-index plat and is assigned page No. 6216, in

book No. _____

Coral M. Cummings
County Official

R-2.25 26 N 29 W

Cross Index No. _____ T. _____ R. _____ P.M.M.



• - corner this sheet