

- INSTRUCTIONS**
1. Original and/or subsequent record used to evaluate the corner position.
 2. Description of evidence found, note discrepancies in the record, state method of establishing lost or obliterated corners.
 3. Description of monument and accessories set to perpetuate the corner position.
 4. Sketch or corner, show all pertinent data which can best be shown in a sketch example, corner marking, topography ties, position of accessories, etc.
 5. Certification must be signed and sealed by Registered Land Surveyor in State of Montana.
 6. Fill in Cross Index & Section Diagram at bottom of sheet.

CERTIFIED CORNER RECORDATION

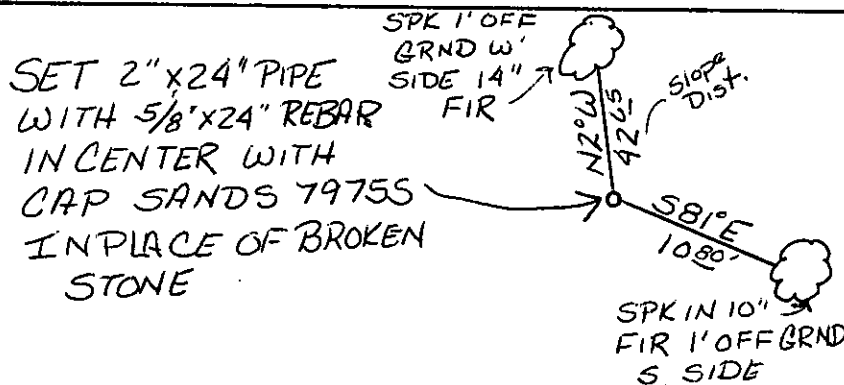
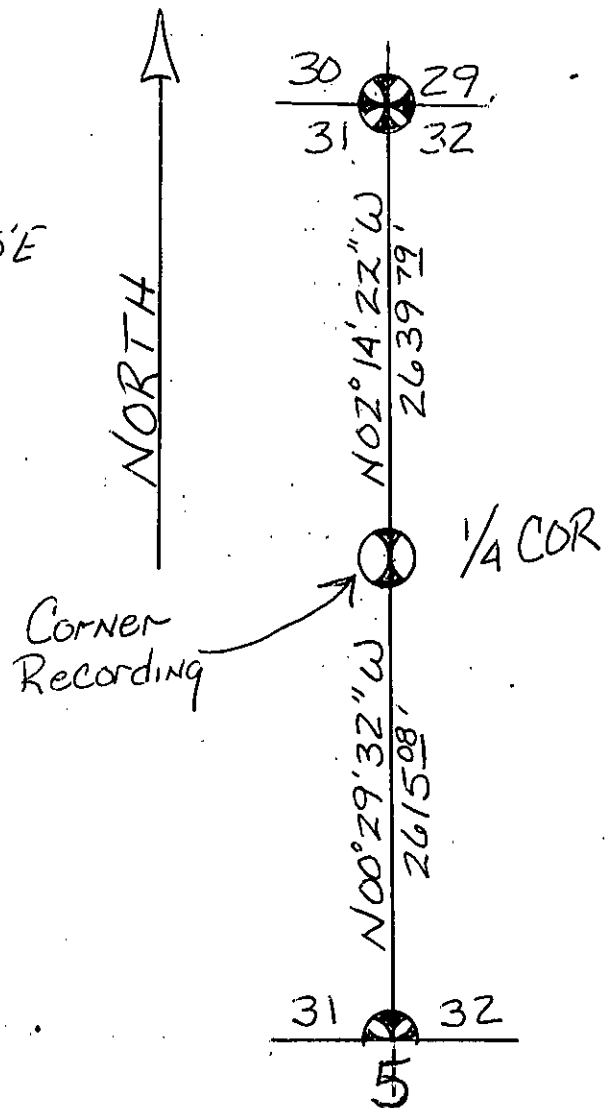
G.L.O. RECORD:

SET 12"x12"x6" LIMESTONE
MARKED 1/4 ON W. FACE

A 10" FIR BEARS N6°W 67 LKS.

A 12" TAMARACK BEARS N69°45'E
41 LKS.

FOUND: BROKEN STONE "4" WAS
VISIBLE IN BURNED PORTION



SKETCH OF CORNER

CERTIFICATION

1. GINNY DETONI
certify the information shown herein is true and correct.

Signature Ground Party Chief

1. Thomas E. Sands
certify that this Corner Record correctly represents work performed by me or under my direction in compliance with the "Corner Recordation Act" (70-22-101, et seq., M.D.A.)

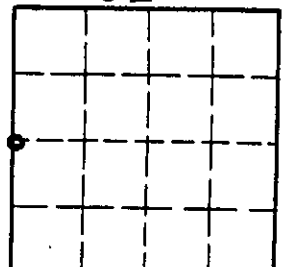
Signature of Surveyor & Seal

Date: 11/24/93 Reg. No. 7975-S
Employer: Sands Surveying, Inc.

Office of Clerk and Recorder, County of Lincoln. This "corner record" was filed for record on the 12-3-93 day of 1993, was noted on the cross-index plat and is assigned page No. 5389, in book No.

Coral M. Cummings, DB
County Official

Sec. 32



Cross Index No. T. 26N R. 29W PMM

• - corner this sheet