

INSTRUCTIONS

1. Original and/or subsequent record used to evaluate the corner position.
2. Description of evidence found, note discrepancies in the record, state method of establishing lost or obliterated corners.
3. Description of monument and accessories set to perpetuate the corner position.
4. Sketch of corner, show all pertinent data which can best be shown in a sketch example, corner marking, topography ties, position of accessories, etc.
5. Certification must be signed and sealed by Land Surveyor registered in the State of Montana.
6. Fill in Cross Index & Section Diagram at bottom of sheet.

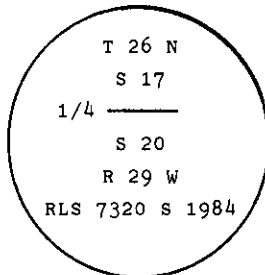
CERTIFIED CORNER RECORDATION

Corner 1/4 Cor. of Secs. 17 & 20 T. 26 N. R. 29 W. P.M.M. Lincoln County

- I. 1903 G.L.O. record by C. H. Albee & W. K. Trippet: Set a sandstone, 12x10x5 ins., 8 ins. in the ground, for 1/4 sec. cor., marked 1/4 on the north face, from which:

A fir 8 ins. diam., bears S $37^{\circ}5'$ E, 310 lks. dist., marked 1/4 S 20 BT.
A fir 14 ins. diam., bears N $37^{\circ}45'$ W, 13 lks. dist., marked 1/4 S 17 BT.

- II. 1984 Land Corner Record by Dick R. Griffin: Corner was reestablished by means of single proportion. Set a 3 in. X 30 in. aluminum pipe with 3 in. aluminum cap stamped as shown. Raised a 3 ft. diam. X 1 ft. rock mound around monument and set steel post and signs 1.5 ft. North. Monument protruding 4 ins. above rock mound.



from which

A 8 in. ponderosa pine bears, S $39^{\circ}0'$ W, 64.5 ft., marked with a blaze and scribed BT.
A 14 in. larch bears, N 72° W, 45.0 ft., marked with a blaze and scribed BT.

- II. Found a U.S.F.S. aluminum cap, disturbed by recent logging activity.
Reset existing alum. cap by dist.-dist. intersection from found bearing trees.

from which

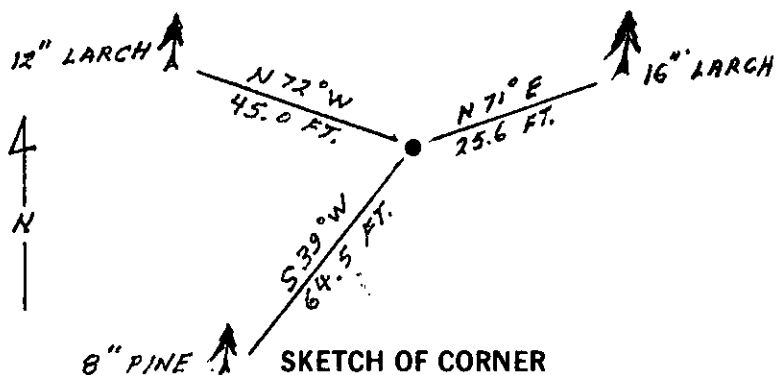
A pine 8 ins. diam., bears S 39° W, 64.5 ft. dist., mkd. 1/4 S 20 BT.
A larch 12 ins. diam., bears N 72° W, 45.0 ft. dist., mkd. 1/4 S 17 BT.

Build small rock collar around monument.

- III Established on new bearing tree

A larch 16 ins. diam., bears N 71° E, 25.6 ft. dist., mkd. with an "X" in a snowblaze and "BT" at the base.

Painted red bands around the bearing trees and attached Land Survey Monument and Bearing Tree signs.
Set a 6 ft. galvanized steel guard post with Land Survey Marker and Property Boundary decals, North, 1.5 ft.
Magnetic Declination: 20° East



SKETCH OF CORNER

CERTIFICATION

I. Kenneth R. Kern
certify the information shown herein is true and correct.
Kenneth R. Kern
Signature Ground Party Chief

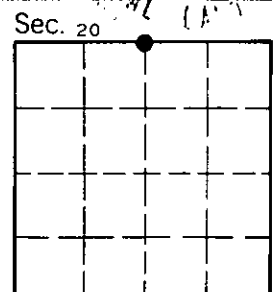
I. Alvah F. Hughes
certify that this Corner Record correctly represents work performed by me or under my direction in compliance with the "Corner Recordation Act" (70-22-101, et seq., M.C.A.)
Alvah F. Hughes
Signature of Surveyor & Seal

Date: 6/30/92 Reg. No. 7322 LS
Employer: U.S. FOREST SERVICE

Office of Clerk and Recorder, County of Lincoln. This "corner record" was filed for record on 12-14-92 was noted on the cross-index plat and is assigned page No. 5150, in book No. Coral M Cummings by BLS

County Official

N-07 26 N 29 W
Cross Index No. T. R. PMM



• - corner this sheet