

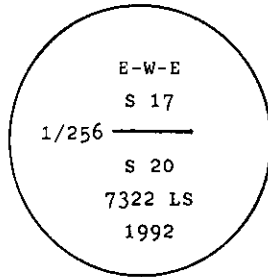
INSTRUCTIONS

1. Original and/or subsequent record used to evaluate the corner position.
2. Description of evidence found, note discrepancies in the record, state method of establishing lost or obliterated corners.
3. Description of monument and accessories set to perpetuate the corner position.
4. Sketch of corner, show all pertinent data which can best be shown in a sketch example, corner marking, topography ties, position of accessories, etc.
5. Certification must be signed and sealed by Land Surveyor registered in the State of Montana.
6. Fill in Cross Index & Section Diagram at bottom of sheet.

CERTIFIED CORNER RECORDATION

Corner EWE 1/256 S 17, S 20 T. 26 N. R. 29 W. P.M.M. Lincoln County

- I. No record found at Lincoln County Courthouse.
- II. No evidence on the ground.
- III. At the determined corner position by survey, set a 3/4 in. dia. driveable aluminum rod, 30 ins. long, 26 ins. in the ground with attached 3 1/4 ins. dia. U.S.D.A. Forest Service aluminum capmarked as shown:



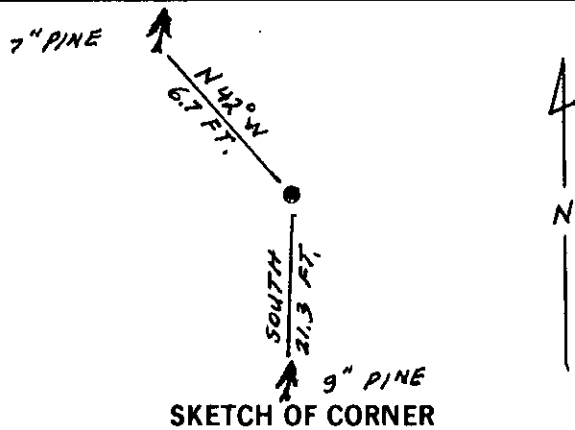
from which the new bearing trees

- A pine 9 ins. diam., bears SOUTH, 21.3 ft. dist., mkd. E W E 1/256 S 20 BT.
- A pine 7 ins. diam., bears N 42° W, 6.7 ft. dist., mkd. E W E 1/256 S 17 BT.

Painted red bands around the bearing trees and attached Land Survey Monument and Bearing Tree signs.

Set a 6 ft. galvanized steel guard post with "Land Survey Monument" and "Property Boundary" decals attached, West, 3 ft.

Magnetic Declination: East, 20°



SKETCH OF CORNER

CERTIFICATION

I, Kenneth R. Kern
 certify the information shown herein is true and correct.
Kenneth R. Kern
 Signature Ground Party Chief

I, Alvah F. Hughes
 certify that this Corner Record correctly represents work performed by me or under my direction in compliance with the "Corner Recordation Act" (70-22-101, et seq., M.C.A.)
Alvah F. Hughes
 Signature of Surveyor & Seal

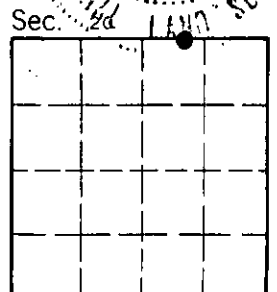
Date: 12/3/92 Reg. No. 7322 LS 7322

Employer: U.S. FOREST SERVICE

Office of Clerk and Recorder, County of Lincoln. This "corner record" was filed for record on 12-14-92 was noted on the cross-index plat and is assigned page No. 5148, in book No. Coral M Cummings by 105

County Official

Cross Index No. N-7.75 T. 26 N R. 29 W PMM



• - corner this sheet