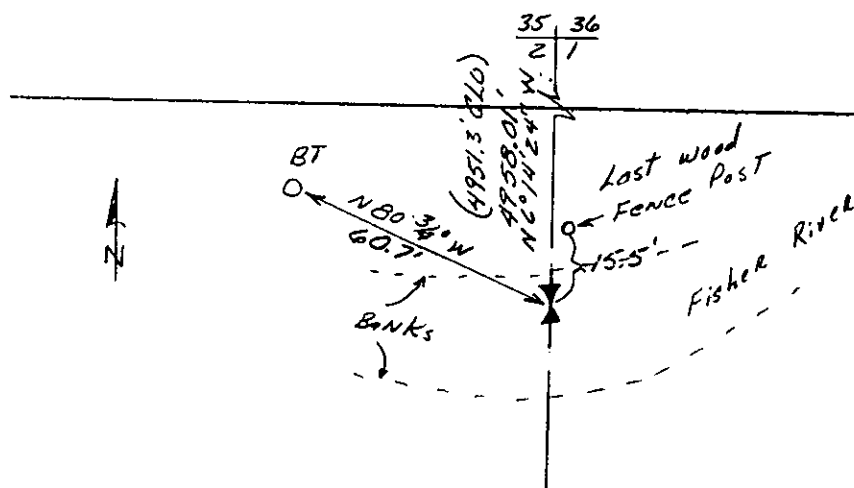
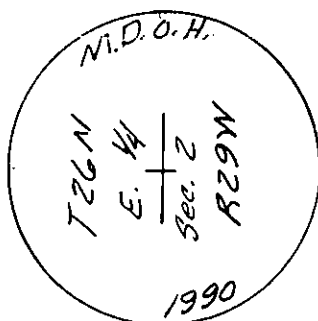


1. Original and/or subsequent record used to evaluate the corner position.
2. Description of evidence found, note discrepancies in the record, state method of establishing lost or obliterated corners.
3. Description of monument and accessories set to perpetuate the corner position.
4. Sketch or corner, show all pertinent data which can best be shown in a sketch example, corner marking, topography ties, position of accessories, etc.
5. Certification must be signed and sealed by Registered Land Surveyor in State of Montana.
6. Fill in Cross Index & Section Diagram at bottom of sheet.

Corner E 1/4 COR. SECTION 2 T. 26 N R. 29 W P.M.M. LINCOLN County

A 20" Pine Bears N 80 $\frac{3}{4}$ ° W, 60.7' (marks visible)
A 7" Fir stump Bears N 40° W, 74.6' (Burned in Fir,
marks not visible.)

Placed B.T. Tag on Last wood RAIL Fence Post. 15.5 FT.
From monument.



MONTANA

DWIGHT L.
AXELSEN

03461-3

CERTIFICATION
REGISTERED

LAND SURVEYOR

Information should be furnished to the Bureau and

1. _____
certify the information shown herein is true and correct.

Signature Ground Party Chlo

1. Dwight L. Axelsen

certify that this Corner Record correctly represents work performed by me or under by direction in compliance with the "Corner Recordation Act" (70-22-101, et seq., M.D.A.)

Wright L. Nelson
Signature of Surveyor & Seal

Date: 7-90 Reg. No. 864123

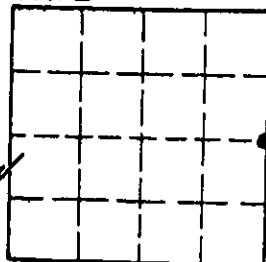
Employer: DELTA ENGR.

Office of Clerk and Recorder, County of Lincoln. This "corner
record" was filed for record on the July 11, _____ day of 1970
was noted on the cross-index plat and is assigned page No. 4256, in
book No. _____ Grant & Sweet by Bill B.

is assigned page No. 4256, in
Grant & Suggs by Bill B. B. B.
County Official

Cross Index No. _____ T. _____ R. _____ PMM

Sec. 2



• corner this sheet