

INSTRUCTIONS

1. Original and/or subsequent record used to evaluate the corner position.
2. Description of evidence found, note discrepancies in the record, state method of establishing lost or obliterated corners.
3. Description of monument and accessories set to perpetuate the corner position.
4. Sketch of corner, show all pertinent data which can best be shown in a sketch example, corner marking, topography ties, position of accessories, etc.
5. Certification must be signed and sealed by Registered Land Surveyor in State of Montana.
6. Fill in Cross Index & Section Diagram at bottom of sheet.

CERTIFIED CORNER RECORDATION

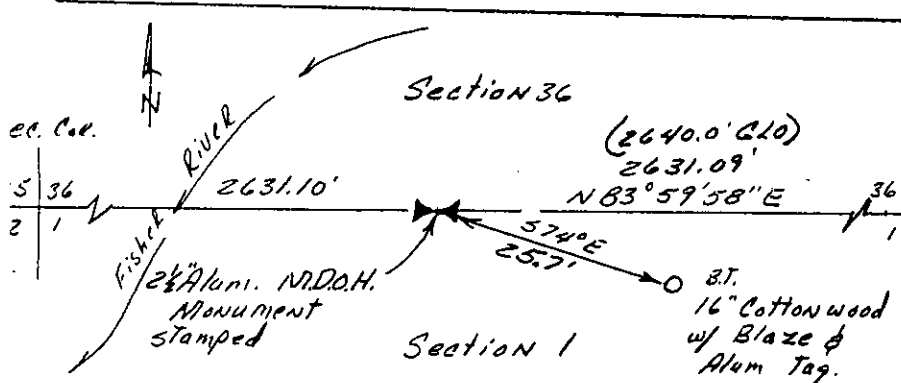
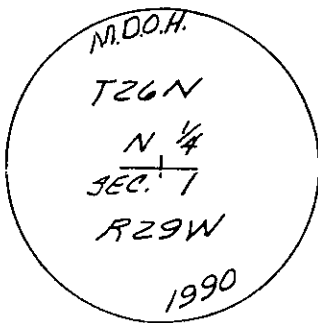
Corner N 1/4 Section 1 T. 26 N R. 29 W P.M.M. LINCOLN County

Original 1/4 corner was not set, a witness cor. was set a limestone 20x12x5 with w.c. 1/4 on N. Face (Not Found)

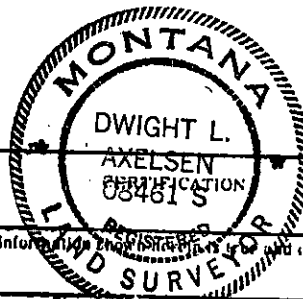
Remaining B.T.s

A Tamarack 30" Dia. Bear N 6° E, 37 IKs (Found stamp)  
Know marks visable

Set new monument a 2 1/2" Dia Alum. M.D.O.H. Cap stamp as shown below, By single proportion, from which a 16" Dia cotton wood Bears S 74° E, 25.7 FT. with Blaze and B.T. Alum. Tag. also galvanized steel post set on East side of Monument.



SKETCH OF CORNER



I, Dwight L. Axelsen certify the information shown on this record is true and correct.

I, Dwight L. Axelsen certify that this Corner Record correctly represents work performed by me or under by direction in compliance with the "Corner Recordation Act" (70-22-101, et seq., M.D.A.)

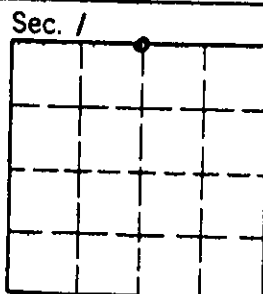
Dwight L. Axelsen  
Signature of Surveyor & Seal

Date: 7-90 Reg. No. 8641 LS

Employer: DELTA ENGR.

Office of Clerk and Recorder, County of Lincoln. This "corner record" was filed for record on the July 11 day of 1990 was noted on the cross-index plat and is assigned page No. 4255, in book No. \_\_\_\_\_

Janet B. Sugil by Brie Bredt  
County Official



Cross Index No. \_\_\_\_\_ T. \_\_\_\_\_ R. \_\_\_\_\_ P.M.M.

• corner this sheet