

INSTRUCTIONS

1. Original and/or subsequent record used to evaluate the corner position.
2. Description of evidence found, note discrepancies in the record, state method of establishing lost or obliterated corners.
3. Description of monument and accessories set to perpetuate the corner position.
4. Sketch of corner, show all pertinent data which can best be shown in a sketch example, corner marking, topography ties, position of accessories, etc.
5. Certification must be signed and sealed by Land Surveyor registered in the State of Montana.
6. Fill in Cross Index & Section Diagram at bottom of sheet.

CERTIFIED CORNER RECORDATION

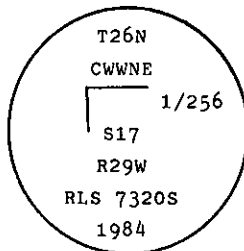
Corner C-W-W-NE 1/256 Sec. 17 T. 26 N. R. 29 W. P.M.M. Lincoln County

- I. 1984 recordation record by Dick R. Griffin, Reg. No. 7320S: "Original record: none; Found: none;
Set: A 3/4 x 30 in. aluminum cap stamped as shown. Cap protruding 4 ins. Raised a 3 ft. diameter x 6 in.
rock pile around monument. Set 6 ft. steel fence post, 1 ft. NW of corner. (posted with 54-2 and 54-9
signs), from which

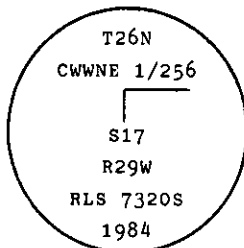
A 22 in. larch, bears S50°E, 41 ft. - - new B.T.
A 24 in. larch, bears S37°W, 73 ft. - - new B.T.

Both are base blazed and scribed B.T. with blaze painted red. Both are posted with 54-3 and 54-4 signs.
The B.T. on U.S.F.S. land has a 6 in. red band painted 6 ft. above ground."

Sketch of corner:



- II. Found a 3/4 in. diam. aluminum rod with 3 1/4 in. diam., U.S.D.A., Forest Service, aluminum cap marked



from which

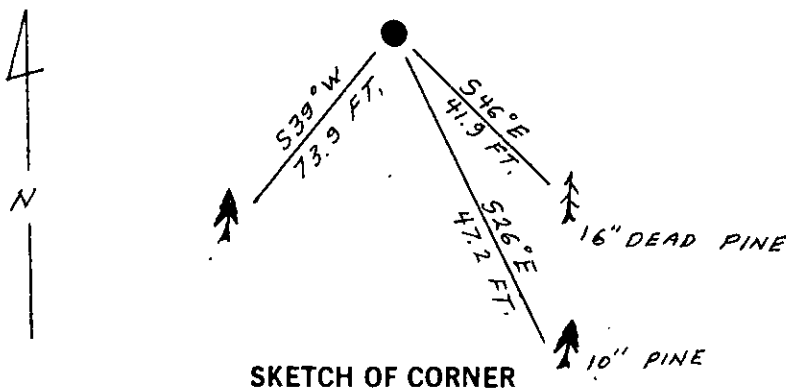
A dead lodgepole pine, 16 ins. diam., bears S46°E, 41.9 ft. dist., scribe CWWNE 1/256 S17 BT
is visible.

A lodgepole pine, 20 ins. diam., bears S39°W, 73.9 ft. dist., scribe CWWNE 1/256 S17 BT is visible.

- III. Established one new bearing tree:

A lodgepole pine, 10 ins. diam., bears S26°E, 47.2 ft., scribed X BT.

Painted red bands around the bearing trees and attached Land Survey Monument and Bearing Tree signs.
Magnetic Declination: 20°30' East



CERTIFICATION

I, Robin Glazier
certify the information shown herein is true and correct.

Signature Ground Party Chief

I, Alvah F. Hughes
certify that this Corner Record correctly represents work performed
by me or under my direction in compliance with the "Corner
Recordation Act" (70-22-101, et seq., M.C.A.).

Alvah F. Hughes
Signature of Surveyor

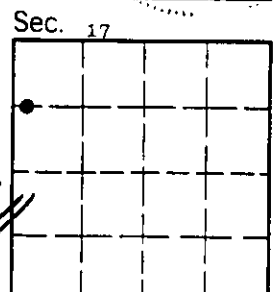
Date: 1/8/90 Reg. No. 7322 LS

Employer: U.S. FOREST SERVICE

Office of Clerk and Recorder, County of Lincoln. This "corner
record" was filed for record on Jan 16, 1990
was noted on the cross-index plat and is assigned page No. 4219, in
book No. _____

Cross Index No. K-7.25 T. 26 N R. 29 W P.M.M.

Adopted July 1, 1981, Montana Board of Professional Engineers & Land Surveyors



• - corner this sheet