

## INSTRUCTIONS

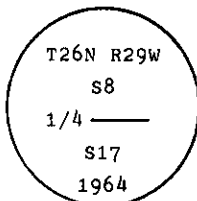
1. Original and/or subsequent record used to evaluate the corner position.
2. Description of evidence found, note discrepancies in the record, state method of establishing lost or obliterated corners.
3. Description of monument and accessories set to perpetuate the corner position.
4. Sketch of corner, show all pertinent data which can best be shown in a sketch example, corner marking, topography ties, position of accessories, etc.
5. Certification must be signed and sealed by Land Surveyor registered in the State of Montana.
6. Fill in Cross Index & Section Diagram at bottom of sheet.

## CERTIFIED CORNER RECORDATION

Corner 1/4 of Secs. 8 & 17 T. 26 N. R. 29 W. P.M.M. Lincoln County

I. 1903 G.L.O., original record by Charles H. Albee: Set a stone monument and two bearing trees.

1964 B.L.M. remonumentation record by Richard L. Larimer et al: "The 1/4 sec. cor. of secs. 8 and 17, monumented with a limestone, 14x8x6 ins., firmly set and mkd. 1/4 on the N. face, and witnessed by the remains of one of the original bearing trees. At the corner point, set an iron post, 30 ins. long, 2 1/2 ins. diam., 27 ins. in the ground, with brass cap mkd.



from which

The remains of the original bearing tree:

A stump, 20 ins. diam., bears S73 1/2° W, 64 lks. dist. (record)

The new bearing trees:

A pine, 5 ins. diam., bears N36° E, 36 lks. dist., mkd. 1/4 S8 BT.

A pine, 10 ins. diam., bears S15° W, 16 lks. dist., mkd. 1/4 S17 BT.

Bury the original stone alongside of the iron post."

II. Found a 2 1/2 in. diam. iron pipe, 5 ins. out of ground, with 3 1/4 in. diam. brass cap marked as shown above, from which

A ponderosa pine, 9 ins. diam., bears N36° E, 23.4 ft. (35.4 lks.) dist., scribe overgrown.

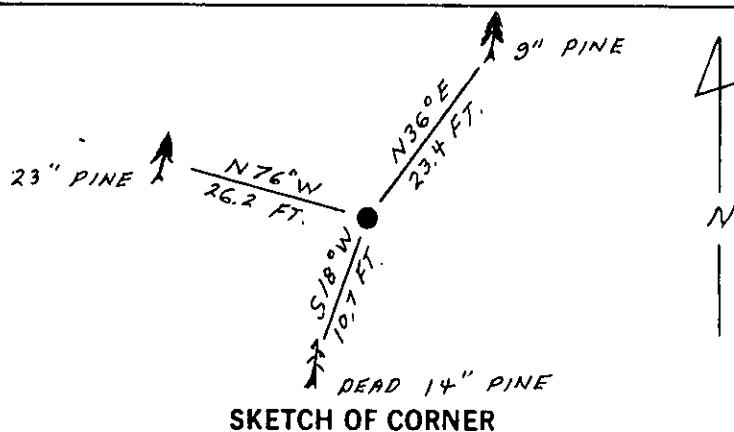
A dead ponderosa pine, 14 ins. diam., bears S18° W, 10.7 ft. (16.2 lks.) dist., scribe 1/4 S17 BT is visible.

III. Established one new bearing tree:

A ponderosa pine, 23 ins. diam., bears N76° W, 26.2 ft. dist., scribed 1/4 S8 BT.

Painted red bands around the bearing trees and attached Land Survey Monument and Bearing Tree signs.

Set a 6 ft. galvanized steel guard post with Land Survey Marker and Property Boundary decals, East, 3 ft. Magnetic Declination: 20° 30' East



SKETCH OF CORNER

## CERTIFICATION

I, Robin Glazier

certify the information shown herein is true and correct.

Signature Ground Party Chief

I, Alvah F. Hughes

certify that this Corner Record correctly represents work performed by me or under my direction in compliance with the "Corner Recordation Act" (70-22-101, et seq., M.C.A.)

Alvah F. Hughes  
Signature of Surveyor & Seal

Date: 1/8/90

Reg. No. 7322

Employer: U.S. FOREST SERVICE

Office of Clerk and Recorder, County of Lincoln. This "corner

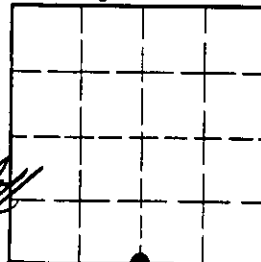
record" was filed for record on Jan 16, 1990

was noted on the cross-index plat and is assigned page No. 4218, in

book No. \_\_\_\_\_

Janet BF Sugil by Bill Smith  
County Official

Sec. 8



• - corner this sheet

Cross Index No. J-7 T. 26 N R. 29 W P.M.M.