

## INSTRUCTIONS

1. Original and/or subsequent record used to evaluate the corner position.
2. Description of evidence found, note discrepancies in the record, state method of establishing lost or obliterated corners.
3. Description of monument and accessories set to perpetuate the corner position.
4. Sketch or corner, show all pertinent data which can best be shown in a sketch example, corner marking, topography ties, position of accessories, etc.
5. Certification must be signed and sealed by Registered Land Surveyor in State of Montana.
6. Fill in Cross Index & Section Diagram at bottom of sheet.

## CERTIFIED CORNER RECORDATION

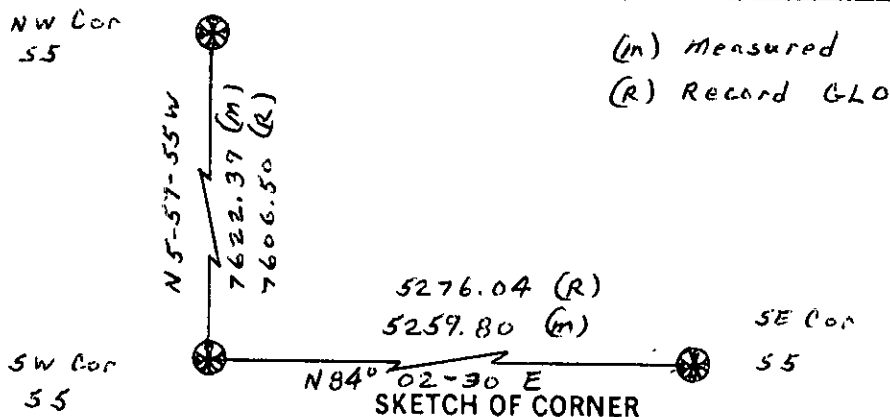
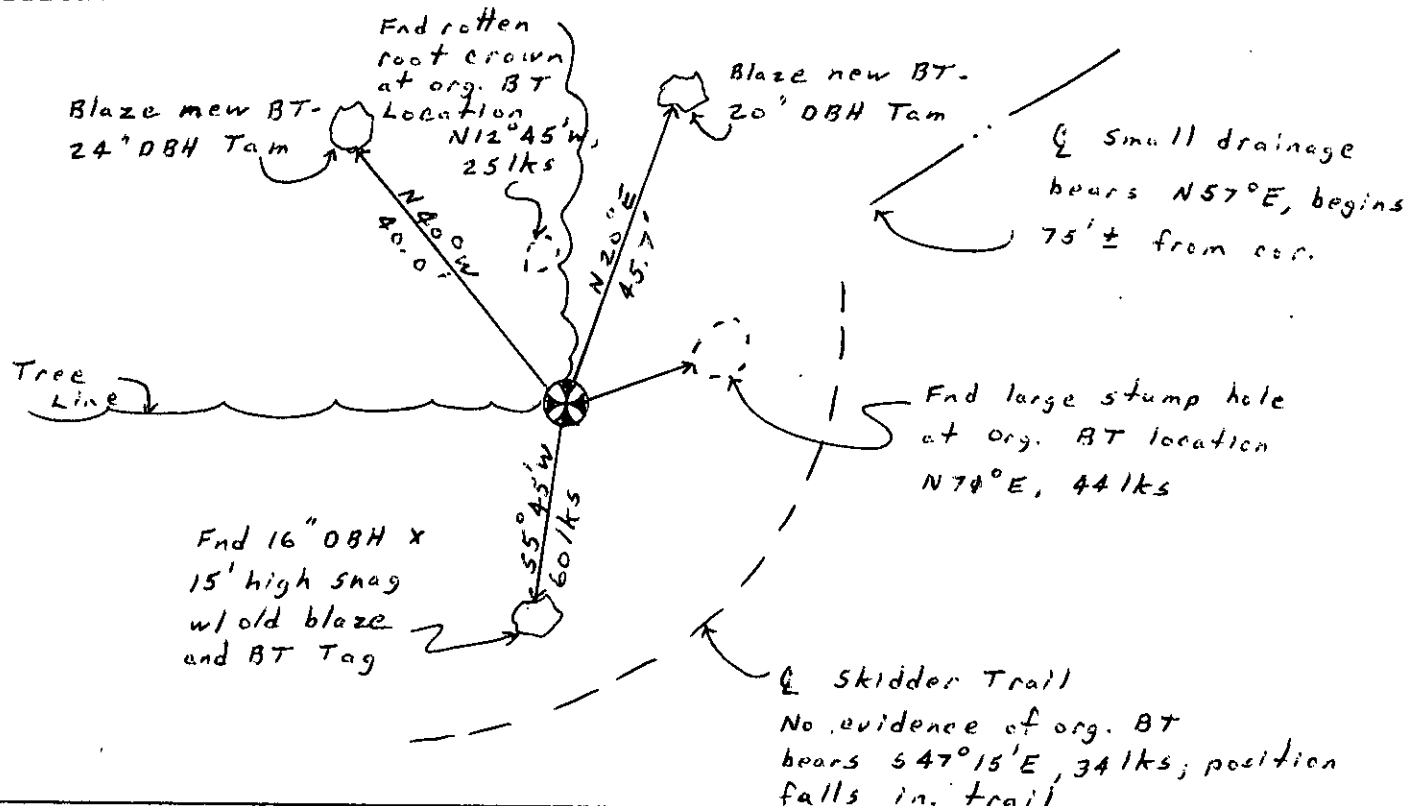
Corner SW Cor S5 T. 26N R. 29W P.M.M. Lincoln County

I. 1903 GLO Record by Albee and Trippet - set a limestone, 14x12x4 ins, 10 ins in the ground, for cor of secs 5, 6, 7, and 8 marked with 5 notches, each, on S and E edges; from which:

a tamarack, 20 ins diam. bears N71°30'E, 44 lks  
 a fir, 8 ins diam, bears S47°15'E, 34 lks  
 a tamarack, 12 ins. diam, bears S5°45'W, 60 lks  
 a pine, 9 ins diam, bears N12°45'W, 25 lks

II. Found 12"x10"x4" limestone lying loose with 5 notches on one edge, no other notches visible. A rough cut 2"x2" red painted post leaning over is alongside. The base of the rough cut post fit ties to evidence of 3 remaining BT's. I accept this position as best evidence of the corner's location.

III. Set a 5/8"x30" rebar at base of rough cut post. Build a small mound of stones around corner and blaze two new BT's. See sketch for additional ties and accessories.



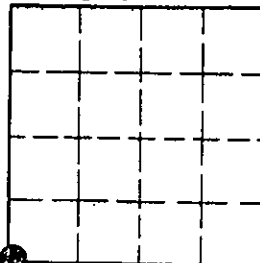
CERTIFICATION  
 I, Steven B. Ivey, 93201LS  
 certify the information shown herein is true and correct.  
Steven B. Ivey  
 Signature of Surveyor  
 I, Dwight L. Axelsen  
 certify that this Corner Record correctly represents work performed by me or under by direction in compliance with the "Corner Recordation Act" (70-22-101, et seq., M.C.A.)  
Dwight L. Axelsen  
 Signature of Surveyor & Sealer  
 Date: Nov. 89 Reg. No. 8641LS  
 Employer: Delta Engineering

Office of Clerk and Recorder, County of Lincoln. This "corner record" was filed for record on the Dec 1 day of 1989 was noted on the cross-index plat and is assigned page No. 4113, in book No. \_\_\_\_\_

County Official Janet B. Siegel by Bill Buckoff

Cross Index No. \_\_\_\_\_ T. \_\_\_\_\_ R. \_\_\_\_\_ P.M.M.

Sec. 5 SW Cor



• corner this sheet