

INSTRUCTIONS

1. Original and/or subsequent record used to evaluate the corner position.
2. Description of evidence found, note discrepancies in the record, state method of establishing lost or obliterated corners.
3. Description of monument and accessories set to perpetuate the corner position.
4. Sketch or corner, show all pertinent data which can best be shown in a sketch example, corner marking, topography ties, position of accessories, etc.
5. Certification must be signed and sealed by Registered Land Surveyor in State of Montana.
6. Fill in Cross Index & Section Diagram at bottom of sheet.

CERTIFIED CORNER RECORDATION

Corner NW Cor S5 T. 26N R. 29W P.M.M. Lincoln County

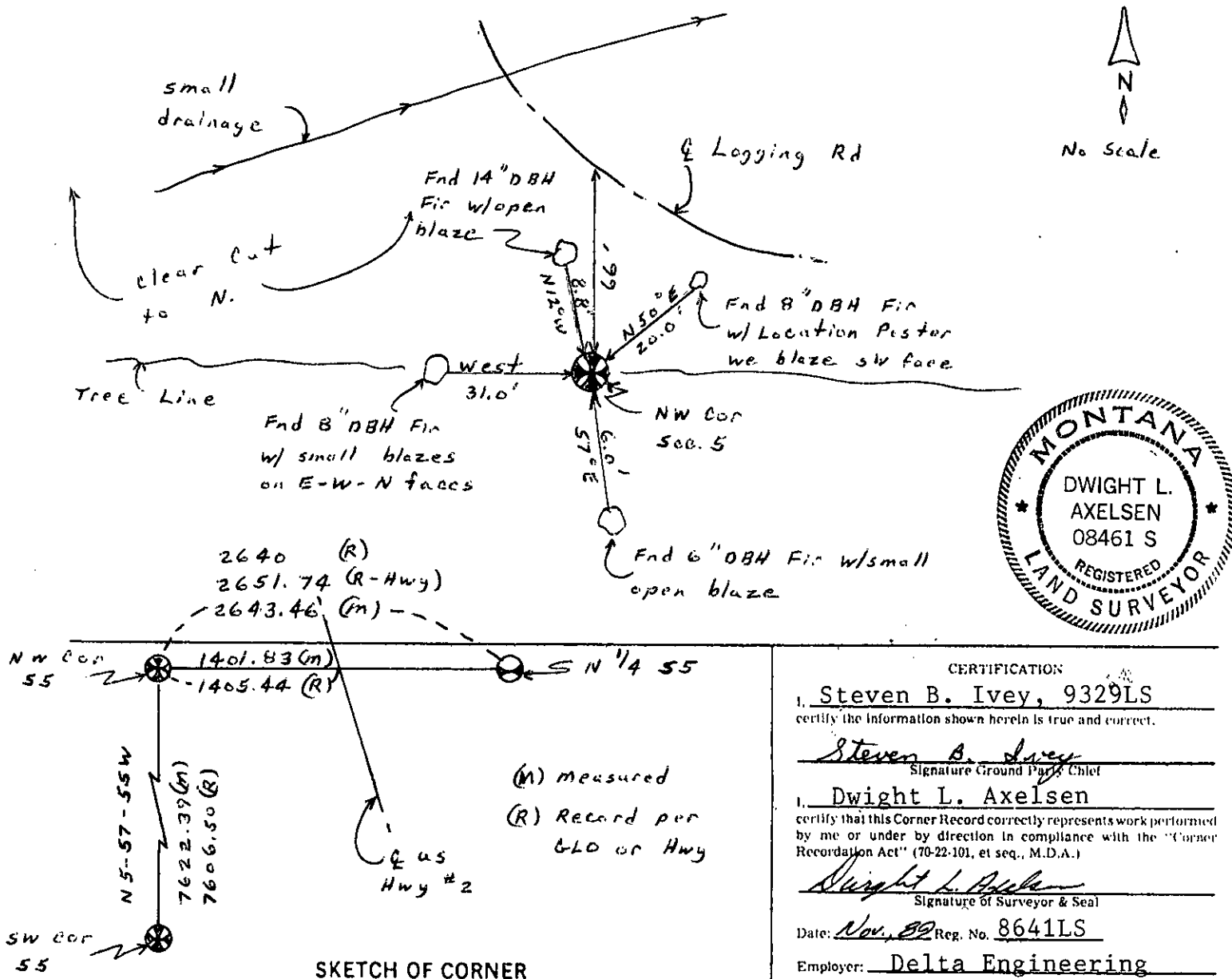
I. 1902 GLO Record by Adams and Weeks - set a fir post 3 ft. long, 6 ins square, 24 ins. in the ground for cor of secs. 5, 6, 31, and 32 with 5 notches on E and 1 notch on W edges. from which:

- a hemlock, 10 ins diam, bears N57°E, 21 lks
- a fir, 10 ins diam, bears S23°45'E, 10 lks
- a fir, 18 ins diam, bears S66°30'W, 23 lks
- a hemlock, 15 ins diam, bears N59°15'W, 30 lks

Plat No. 628 by Burdick, 1959: section corner found

II. Found a 1" OD pipe, 6" up, with a rough cut 3"x3"x4' high post on S side. No evidence of original BT's remain. This position approximately fits distances to the $\frac{1}{2}$ cor to the E, to the center line of the highway to the E, and to section corners to N and S. Accept this position as best evidence of the corners location.

III. See sketch for additional ties and accessories.



SKETCH OF CORNER

CERTIFICATION

I. Steven B. Ivey, 9329LS
certify the information shown herein is true and correct.

Steven B. Ivey
Signature of Ground Party Chief

I. Dwight L. Axelsen
certify that this Corner Record correctly represents work performed by me or under my direction in compliance with the "Corner Recordation Act" (70-22-101, et seq., M.D.A.)

Dwight L. Axelsen
Signature of Surveyor & Seal

Date: Nov. 89 Reg. No. 8641LS

Employer: Delta Engineering

Office of Clerk and Recorder, County of Lincoln. This "corner record" was filed for record on the Dec 1 day of 1989 was noted on the cross-index plat and is assigned page No. 4112, in book No. _____

Grant B. Siegel by Bill Beckley
County Official

Sec. 5 NW Cor

• corner this sheet

Cross Index No. _____ T. _____ R. _____ P.M.M.